

COUNTY OF ROCKLAND
Department of General Services
Purchasing Division

Contract Award Notification

Title: **Uniforms Clothing, Work Clothes, Outerwear & Accessories**

Contract Period: October 24, 2022 through December 5, 2023 w/ (4) 1-year options
Extended through December 5, 2024, w/ (3) 1-year options
Extended through December 5, 2025, w/ (2) 1-year options

Original Date of Issue: October 24, 2022

Date of Revision: **04/22/2025**

BID No: **RFB-RC-2022-073**

Catalog: **Clothing and Uniforms**

Authorized Users: County Agencies, All Political Subdivisions

Address Inquiries To:

Name: Michele Phillips
Title: Purchaser I
Phone: 845-364-2984
Fax: 845-364-3809
E-mail: phillipm@co.rockland.ny.us

Description

This contract is to purchase various work uniforms and related items.

Contract #	Vendor Number	Contractor & Address	Telephone No.
BID 22-073	0000022188 DID NOT RENEW 12/6/23	Emergency Responder Products, LLC 175 Bethpage Sweet Hollow Road Old Bethpage, NY 11804 Contact: Viena Ludewig ywl@911erp.com	877-572-9592
BID 22-073-A	0000025218	Feury Image Group, Inc. 85 Avenue K Newark, NJ 07105 Contact: Konrad Campbell kcampbell@feuryimagegroup.com	973-465-0900 Fax 973-465-0992
BID 22-073-B	0000005278	NYS Industries for the Disabled 11 Columbia Circle Drive Albany, NY 12203 Contact: Sean Coons scoons@nysid.org	518-694-0215
BID 22-073-C	0000021678	PowerPak Civil & Safety, LLC 225 North Route 303, Unit 108 Congers, NY 10920 Contact: Jay Markham Jay.markham@powerpak.net	800-451-5811

BID 22-073-D	0000007112	The Liberty Store 5 East Genesee Street Auburn, NY 13021 Contact: Marty Goldman marty@thelibertystore.com	315- 252-1761 Fax 315-282-2400
--------------	------------	--	---------------------------------------

PAGE 2 OF 138

NOTE: BEFORE PRINTING -THIS AWARD IS 100+ PAGES

RFB-RC-2022-073

AWARDED SUPPLIERS: ACCOUNT MANAGERS

For any questions regarding orders or awarded products please reach out to the Contract Manager for assistance. If you, do not receive a response within 24-48 hours, please notify Senior Manager contact.

EMERGENCY RESPONDERS (inactive)

**DID NOT RENEW CONTRACT- See Award RFB-RC-2023-083 for New Suppliers
Awarded these items.**

FEURY IMAGE GROUP

Account Manager: Sherhonda Ferriole SFerriole@feuryimagegroup.com

Alternate Senior Manager: Konrad Campbell KCampbell@feuryimagegroup.com

THE LIBERTY STORE

Wendy and Marty Goldman Yellowkid@TDS.net

NYSID

**Account Manager: Ciara Hoffler CHoffler@nysid.org and
customerservice@nysid.org**

Alternate Senior Manager: Sean Coons SCoons@nysid.org

POWERPAK

Account Manager: Leinis Santamaria Leinis.santamaria@powerpak.net

Alternate Senior Manager: Jay Markham Jay.Markham@powerpak.net

<p align="center"> COUNTY OF ROCKLAND DGS – PURCHASING DEPARTMENT BLDG. A, 6TH FLOOR, 50 SANATORIUM ROAD POMONA, NY 10970 TELEPHONE NO.: 845-364-3820 FAX NO.: 845-364-3809 </p>								
LINE NO.	DESCRIPTION	ITEM NUMBER	EST. QTY. YEARLY	UNIT	UNIT PRICE	MANUFACTURER/BRAND NAME	STYLE NUMBER	VENDOR
CATEGORY: HATS/CAPS								
1-1	CAPS, BASEBALL TYPE - Flexfit, moisture-wicking performance, structured, mid profile solid twill all around, Fabric: Nylon/Cotton/Spandex, pre-curved visor Sizes: S/M (6 3/4-7 1/4), L/XL (7 1/8-7 5/8) Colors: Navy, Forest Green, Black Price to include Black or white 5/8" lettering (maximum 25 letters) screened across the front. SPORT-TEK STC17 or approved equal. Equal MUST be available in all colors and sizes listed	20130120002	75	EACH	\$ 12.02	SPORT TEK	STC17	Feury Image Group Inc
1-2	CAPS, BASEBALL TYPE - 100% Cotton Twill all around, Adjustable hook and loop back strap, unstructured, cotton sweatband, Pre-curved visor Size: One size fits most (7-7 3/4) Colors: Navy, Dark Green, Black Price to include Black or White 5/8" lettering (maximum 25 letters) embroidered across the front. Richardson R65 or approved equal. Equal MUST be available in all colors listed. Minimum of 20 hats per delivery.	20130120004	120	EACH	\$ 10.71	Richardson	R65	NYS Industries for the Disabled

<p align="center"> COUNTY OF ROCKLAND DGS – PURCHASING DEPARTMENT BLDG. A, 6TH FLOOR, 50 SANATORIUM ROAD POMONA, NY 10970 TELEPHONE NO.: 845-364-3820 FAX NO.: 845-364-3809 </p>								
LINE NO.	DESCRIPTION	ITEM NUMBER	EST. QTY. YEARLY	UNIT	UNIT PRICE	MANUFACTURER/BRAND NAME	STYLE NUMBER	VENDOR
1-3	CAPS, BASEBALL TYPE with REFLECTIVE TAPING Polyester, Six panel, reflective crown taping, precurved visor, adjustable closure, ANSI certified (if decorated loses ANSI certification) Size: One size fits most Colors: Safety Yellow or lime Brand name Outdoor Cap ANSI-100 or approved equal.	20130120008	25	EACH	\$ 10.29	Cornerstone NOT RENEWED AS OF 12/06/2023	CS802	Emergency Responder Products
1-4	BUCKET HAT- HI-VIS with INSECT GUARD Birdseye polyester, lightweight and breathable, non-staining, odor-free, SPF35 Dry/SPF50 Wet, Repels mosquitoes, ticks, flies, chiggers and midges, remains effective for 50 washings Active Ingredient: Permethrin 0.52% EPA registered, non returnable Color: HiVis Yellow Sizes S/M, L/XL Utility Pro UHV503	20130160002	15	EACH	\$ 12.03	Utility Pro	UHV503	NYS Industries for the Disabled
CATEGORY: WOMENS APPAREL								

<p align="center"> COUNTY OF ROCKLAND DGS – PURCHASING DEPARTMENT BLDG. A, 6TH FLOOR, 50 SANATORIUM ROAD POMONA, NY 10970 TELEPHONE NO.: 845-364-3820 FAX NO.: 845-364-3809 </p>								
LINE NO.	DESCRIPTION	ITEM NUMBER	EST. QTY. YEARLY	UNIT	UNIT PRICE	MANUFACTURER/BRAND NAME	STYLE NUMBER	VENDOR
2-1	SHIRTS-T, WOMEN'S V-NECK, SHORT SLEEVE, SCREEN PRINTED 100% ring spun cotton, short sleeves, semi-fitted, double needle sleeve and hem, soft. Price to include Department Logo to be screened in white or black on full back or right chest. Department logo and location supplied at time of order. Colors: Navy, Royal, White Size: Small, Medium, Large, X-Large, XX-Large Gildan 64V00L or approved equal	20070000005	10	EACH	\$ 8.78	Gildan	64V001	Feury Image Group Inc
2-2	SHIRTS-T, WOMEN'S CREW-NECK, SHORT SLEEVE, SCREEN PRINTED 100% ring spun cotton (4.5-5.3 oz/sq yd), short sleeves, semi-fitted, double needle sleeve and hem, soft. Price to include Department name or Logo to be screened in white or black on full back or right chest. Department name or logo and location, color and size supplied at time of order. Colors: Navy, Light Blue, White Size: Small, Medium, Large, X-Large, 2XL, 3XL Gildan 64000L or approved equal	20070840023	5	EACH	\$ 8.24	Gildan	5000L	Feury Image Group Inc

<p align="center"> COUNTY OF ROCKLAND DGS – PURCHASING DEPARTMENT BLDG. A, 6TH FLOOR, 50 SANATORIUM ROAD POMONA, NY 10970 TELEPHONE NO.: 845-364-3820 FAX NO.: 845-364-3809 </p>								
LINE NO.	DESCRIPTION	ITEM NUMBER	EST. QTY. YEARLY	UNIT	UNIT PRICE	MANUFACTURER/BRAND NAME	STYLE NUMBER	VENDOR
2-3	SHIRTS-T, WOMEN'S CREW-NECK, LONG SLEEVE, SCREEN PRINTED 100% cotton, mid weight (4.5 oz-5.3 oz./sq yd), long sleeves, semi-fitted, double needle sleeve and hem, soft. Price to include Department name or Logo to be screened in white or black on full back or right chest. Department name or logo and location , color and size supplied at time of order. Colors: Navy, Light Blue, White Size: Small, Medium, Large, X-Large, XX-Large Gildan 5400L or approved equal	20070840024	6	EACH	\$ 10.09	Gildan	54000L	NYS Industries for the Disabled
2-4	SHIRT, WOMEN'S POLO, PERFORMANCE, LONG SLEEVE WITH EMBROIDERY 100% polyester, Moisture Wicking, knit collar, 4 button, spandex enhanced knit cuffs, anti-microbial Price to include County logo with Department name embroidered in white or black on left chest. Embroidery details to be provided at time of order. Patches may be requested at additional contract price Colors: Navy, Forest, Royal, White Sizes: X-Small, Small, Medium, Large, X-Large Core 365 style 78192 or approved equal	20010760019	6	EACH	\$ 21.00	Core 365	78192	NYS Industries for the Disabled

<p align="center"> COUNTY OF ROCKLAND DGS – PURCHASING DEPARTMENT BLDG. A, 6TH FLOOR, 50 SANATORIUM ROAD POMONA, NY 10970 TELEPHONE NO.: 845-364-3820 FAX NO.: 845-364-3809 </p>								
LINE NO.	DESCRIPTION	ITEM NUMBER	EST. QTY. YEARLY	UNIT	UNIT PRICE	MANUFACTURER/BRAND NAME	STYLE NUMBER	VENDOR
2-5	SHIRT, WOMEN'S POLO, PERFORMANCE, LONG SLEEVE WITH EMBROIDERY Colors: Navy, Forest, Royal, White Sizes: 2XL,3XL SAME DESCRIPTION AS ITEM # 2-4	20010760023	2	EACH	\$ 23.63	Core 365	78192	NYS Industries for the Disabled
2-6	SHIRT, WOMEN'S POLO, PERFORMANCE, SHORT SLEEVE WITH EMBROIDERY 100% polyester, Moisture Wicking, knit collar, 4 button, spandex enhanced knit cuffs, anti-microbial, heat seal label Price to include County logo with Department name embroidered in white or black on left chest. Embroidery details to be provided at time of order. Patches may be requested at additional contract price Colors: Navy, Forest, Royal, White, Burgundy, Safety Yellow Sizes: X-Small, Small, Medium, Large, X-Large Core 365 style 78181 or approved equal	20010760024	8	EACH	\$ 20.00	Core 365	78181	NYS Industries for the Disabled
2-7	SHIRT, WOMEN'S POLO, PERFORMANCE, SHORT SLEEVE WITH EMBROIDERY Colors: Navy, Forest, Royal, White, Burgundy, Safety Yellow Sizes: 2XL, 3XL SAME DESCRIPTION AS ITEM # 2-6	20010760025	2	EACH	\$ 22.50	Core 366	78181	NYS Industries for the Disabled

<p align="center"> COUNTY OF ROCKLAND DGS – PURCHASING DEPARTMENT BLDG. A, 6TH FLOOR, 50 SANATORIUM ROAD POMONA, NY 10970 TELEPHONE NO.: 845-364-3820 FAX NO.: 845-364-3809 </p>								
LINE NO.	DESCRIPTION	ITEM NUMBER	EST. QTY. YEARLY	UNIT	UNIT PRICE	MANUFACTURER/BRAND NAME	STYLE NUMBER	VENDOR
2-8	SHIRTS, WOMEN'S POLO, SHORT SLEEVE, SCREEN PRINTED Golf style, preshrunk cotton/polyester, 5.0-5.5 oz, 3 or 4 button placket, ladies fit, welt knit collar, stain resistant, double needle Price to include Department name to be screened on right chest in 5/8" white or black lettering. Department name, size and color supplied at time of order. Color: Lt. Blue, Navy, White, Forest Green Size: Small, Medium, Large, X-Large, XX-Large Jerzees 437WR or approved equal.	20010760018	6	EACH	\$ 14.49	Jerzees	437WR	NYS Industries for the Disabled
2-9	SHIRTS, WOMEN'S POLO, SHORT SLEEVE, EMBROIDERED Golf style, preshrunk cotton/polyester, 5.0-5.5 oz, 3 or 4 button placket, ladies fit, welt knit collar, stain resistant, double needle Price to include 'County of Rockland' and/or Department name to be embroidered on left chest in 5/8" white or black lettering. Department name, size and color supplied at time of order. Color: Lt. Blue, Navy, White, Forest Green Size: Small, Medium, Large, X-Large, XX-Large Jerzees 437WR or approved equal.	20010760026	12	EACH	\$ 15.70	Jerzees	437WR	NYS Industries for the Disabled

COUNTY OF ROCKLAND DGS – PURCHASING DEPARTMENT BLDG. A, 6TH FLOOR, 50 SANATORIUM ROAD POMONA, NY 10970 TELEPHONE NO.: 845-364-3820 FAX NO.: 845-364-3809								
LINE NO.	DESCRIPTION	ITEM NUMBER	EST. QTY. YEARLY	UNIT	UNIT PRICE	MANUFACTURER/BRAND NAME	STYLE NUMBER	VENDOR
2-10	SHIRT- POPLIN, WOMEN'S, LONG SLEEVE, EMBROIDERED Cotton/Polyester woven blend, bust darts, open collar, dyed to match buttons Price to include 'County of Rockland' and/or Department name to be embroidered on left chest. Name to be supplied at time of order. Colors: White, Navy, Carolina Blue Sizes, X-Small, Small, Medium, Large, X-Large Port Authority LW100 or approved equal	20010760027	15	EACH	\$ 19.68	Port Authority	LW100	NYS Industries for the Disabled
2-11	PANTS, WOMEN'S, MID RISE, STRAIGHT LEG Bi-stretch 7.0-7.5 oz. twill, Cotton/Spandex, Mid Rise, Straight Leg, 2 side pockets, 2 back pockets. Color and size selected at time of order Colors: Black, Khaki, Navy Size: 4 – 22, Length: Regular Brands: Dickies Style # FP401 or approved equal. GCA not approved equal.	20044580002	4	PAIR	NO AWARD			
2-12	JEANS WOMEN'S STRETCH DENIM BOOTCUT 89% Cotton, 8% Polyester, 3% spandex , good stretch and recovery, soft Colors: Rinsed Indigo Blue(RNB), Rinsed black (RBK), Stonewash indigo blue (SNB) Sizes: 2-14 Inseam: Regular Dickies FD147 or approved equal Key Industries not an approved equal	20044	6	PAIR				

<p align="center"> COUNTY OF ROCKLAND DGS – PURCHASING DEPARTMENT BLDG. A, 6TH FLOOR, 50 SANATORIUM ROAD POMONA, NY 10970 TELEPHONE NO.: 845-364-3820 FAX NO.: 845-364-3809 </p>								
LINE NO.	DESCRIPTION	ITEM NUMBER	EST. QTY. YEARLY	UNIT	UNIT PRICE	MANUFACTURER/BRAND NAME	STYLE NUMBER	VENDOR
2-13	JEANS WOMEN'S STRETCH DENIM BOOTCUT 89% Cotton, 8% Polyester, 3% spandex , good stretch and recovery, soft Colors: Rinsed Indigo Blue(RNB), Rinsed black (RBK) Sizes: 16W, 18W, 20W, 22W Dickies FDW147 or approved equal Keu Industries not an approved equal	20044	4	PAIR	NO AWARD			
2-14	PANTS, WOMEN'S PLUS SIZE, STRAIGHT LEG Bi-stretch 7.0-7.5 oz. twill, Cotton/Spandex, Mid Rise,Straight Leg. 2 side pockets, 2 back pockets. Color and size selected at time of order Colors: Black, Khaki, Navy Size: 16W-24W, Length: Regular Brands: Dickies Style # FPW41 or approved equal. GCA not approved equal.	20044	2	PAIR				
2-15	PANTS, WOMEN'S, MID RISE, BOOT CUT Bi-stretch 7.0-7.5 oz. twill, Cotton/Spandex, Mid Rise,Straight Leg. 2 side pockets, 2 back pockets. Color and size selected at time of order Colors: Black, Khaki, Navy Size: 4 – 16, Length: Regular Brands: Dickies Style # FP402 or approved equal. GCA not approved equal.	20044	4	PAIR				

<p align="center"> COUNTY OF ROCKLAND DGS – PURCHASING DEPARTMENT BLDG. A, 6TH FLOOR, 50 SANATORIUM ROAD POMONA, NY 10970 TELEPHONE NO.: 845-364-3820 FAX NO.: 845-364-3809 </p>								
LINE NO.	DESCRIPTION	ITEM NUMBER	EST. QTY. YEARLY	UNIT	UNIT PRICE	MANUFACTURER/BRAND NAME	STYLE NUMBER	VENDOR
2-16	PANTS, WOMEN'S, INDUSTRIAL CARGO PANT 7.0-7.5 oz. twill, Polyester/Cotton, wrinkle resistant, 2 front side pockets, 2 back pockets, two patch leg pockets with flap. Color and Size selected at time of order Colors: Black, Khaki, Navy Size: 4 – 20, Inseam: 26-33 Brands: REDKAP PT89 or approved equal. GCA not approved equal.	20044580003	4	PAIR	\$ 32.28	Red Kap	PT89	Feury Image Group Inc
CATEGORY: COVERALLS								
3-1	COVERALLS, INSULATED- 7.5 oz. poly/cotton perm-press twill outer shell, medium-weight insulation quilted nylon lining. To-way brass front zipper, full-length brass leg zipper outside of legs. pleated back and elbows, elastic waist inserts, hidden knit storm cuffs Seven pockets plus utility pocket and hammer loop, Price to include sewing of departmental patches. Patches and location to be provided at time of order. Color: Navy Size: Small, Medium, Large, X-Large, 2XL Berne I414NV or approved equal.	20038000001	15	EACH	\$ 74.25	Berne Apparel	I414 NV	The Liberty Store

<p align="center"> COUNTY OF ROCKLAND DGS – PURCHASING DEPARTMENT BLDG. A, 6TH FLOOR, 50 SANATORIUM ROAD POMONA, NY 10970 TELEPHONE NO.: 845-364-3820 FAX NO.: 845-364-3809 </p>								
LINE NO.	DESCRIPTION	ITEM NUMBER	EST. QTY. YEARLY	UNIT	UNIT PRICE	MANUFACTURER/BRAND NAME	STYLE NUMBER	VENDOR
3-2	COVERALLS, INSULATED- 7.5 oz. poly/cotton perm-press twill outer shell, medium-weight insulation quilted nylon lining. To-way brass front zipper, full-length brass leg zipper outside of legs. pleated back and elbows, elastic waist inserts, hidden knit storm cuffs Seven pockets plus utility pocket and hammer loop, Price to include sewing of departmental patches. Patches and location to be provided at time of order. Color: Navy Size: 3XL, 4XL Berne I414NV or approved equal.	20038000003	5	EACH	\$ 84.25	Berne Apparel	I414 NV	The Liberty Store
CATEGORY: JACKETS								
4-1	JACKET, FIELD TYPE, ALL SEASON Water repellent, Cotton/Poly Twill, polyester quilted button-in liner, brass zipper and storm flap snap front closure, stand up collar, concealable drawstring hood, 2 expandable chest pockets, 2 hand pockets, drawstring waist, Action back-welt seaming, adjustable wrist closure Size: Small, Medium, Large, X-Large Colors: Olive, Black Rothco M-65 or approved equal.	20016520001	15	EACH	\$ 74.25	Rothco	M-65	The Liberty Store
4-2	JACKET, ARMY FIELD TYPE Size: 2XL Colors: Olive, Black SAME DESCRIPTION AS ITEM # 4-1	20016520003	2	EACH	\$ 76.25	Rothco	M-65	The Liberty Store

<p align="center"> COUNTY OF ROCKLAND DGS – PURCHASING DEPARTMENT BLDG. A, 6TH FLOOR, 50 SANATORIUM ROAD POMONA, NY 10970 TELEPHONE NO.: 845-364-3820 FAX NO.: 845-364-3809 </p>								
LINE NO.	DESCRIPTION	ITEM NUMBER	EST. QTY. YEARLY	UNIT	UNIT PRICE	MANUFACTURER/BRAND NAME	STYLE NUMBER	VENDOR
4-3	JACKET, ARMY FIELD TYPE Size: 3XL Colors: Olive, Black SAME DESCRIPTION AS ITEM # 4-1	20016520005	1	EACH	\$ 79.25	Rothco	M-65	The Liberty Store
4-4	JACKET, ARMY FIELD TYPE Size: 4XL Colors: Olive, Black SAME DESCRIPTION AS ITEM # 4-1	20016520007	1	EACH	\$ 82.25	Rothco	M-66	The Liberty Store
4-5	BUTTON-IN LINING FOR ABOVE M-65 JACKETS Size: Small, Medium, Large, X-Large, 2XL Colors: Black, Olive Poly-filled, 100% Nylon. Rothco 8294/8292 or approved equal.	20016520009	2	EACH	\$ 29.10	Rothco	8294 Black 8292 Olive	The Liberty Store
4-6	JACKETS, COACHES Nylon shell, light flannel lining, water repellant, raglan sleeves, elasticized cuffs, drawstring bottom, snaps front, with collar, two pockets Price to include "Parks Dept." to be embroidered on left chest and across full back, White 5/8" lettering on front and white 1-1/2" lettering on back. Color: Dark Green Size: Medium, Large, X-Large Cardinal 321 or approved equal.	20016550009 DISCONTINUED	5	EACH	\$ 18.10	Edwards	3430	Feury Image Group Inc

<p align="center"> COUNTY OF ROCKLAND DGS – PURCHASING DEPARTMENT BLDG. A, 6TH FLOOR, 50 SANATORIUM ROAD POMONA, NY 10970 TELEPHONE NO.: 845-364-3820 FAX NO.: 845-364-3809 </p>								
LINE NO.	DESCRIPTION	ITEM NUMBER	EST. QTY. YEARLY	UNIT	UNIT PRICE	MANUFACTURER/BRAND NAME	STYLE NUMBER	VENDOR
4-7	JACKETS, COACHES Color: Dark Green Size: 2XL, 3XL SAME DESCRIPTION AS ITEM # 4-6	20016550010 DISCONTINUED	1	EACH	\$ 20.82	Edwards	3430	Feury Image Group Inc
4-8	JACKETS, COACHES Nylon windbreaker material shell, light flannel lining, water repellant, elasticized cuffs, drawstring bottom, snaps front, with collar, two pockets Price is to include sewing of departmental patches. Size, color, department patches and location to be supplied at time of order. Colors: Navy, Black Size: Small, Medium, Large, X-Large Cardinal 321 or approved equal.	20016550001	15	EACH	\$ 19.01	Edwards	3430	Feury Image Group Inc
4-9	JACKETS, COACHES, Colors: Navy, Black Size: 2XL, 3XL SAME DESCRIPTION AS ITEM# 4-8	20016550002	5	EACH	\$ 21.87	Edwards	3430	Feury Image Group Inc
4-10	JACKETS, COACHES, Colors: Navy, Black Size: 4XL SAME DESCRIPTION AS ITEM # 4-8	20016550003	1	EACH	\$ 21.87	Edwards	3430	Feury Image Group Inc

<p align="center"> COUNTY OF ROCKLAND DGS – PURCHASING DEPARTMENT BLDG. A, 6TH FLOOR, 50 SANATORIUM ROAD POMONA, NY 10970 TELEPHONE NO.: 845-364-3820 FAX NO.: 845-364-3809 </p>								
LINE NO.	DESCRIPTION	ITEM NUMBER	EST. QTY. YEARLY	UNIT	UNIT PRICE	MANUFACTURER/BRAND NAME	STYLE NUMBER	VENDOR
4-11	JACKET- THREE SEASON CLASSIC- 100% nylon taslon shell with microfleece lining and lightweight polyfill insulation, nylon lined sleeves, raglan sleeves, two outside zip pockets, inside zip chest pocket, YKK zippers, knit banded bottom and cuffs Price to include two location embroidery or patches to be sewn (patches provided by County) Colors: Navy, Hunter Green, Black Sizes: Small, Medium, Large, X-Large Devon And Jones D700 or approved equal	20016510003	30	EACH	\$ 48.17	Devon Jones	D700 (Port and Company J754 - HUNTER GREEN ONLY)	Feury Image Group Inc
4-12	JACKET- THREE SEASON CLASSIC Colors: Navy, Hunter Green, Black (all with gray fleece) Size: XX-Large (2XL) SAME DESCRIPTION AS ITEM # 4-11	20016510004	5	EACH	\$ 51.37	Devon Jones	D700 (Port and Company J754 - HUNTER GREEN ONLY)	Feury Image Group Inc
4-13	JACKET- THREE SEASON CLASSIC Colors: Navy, Hunter Green, Black Size: 3XL SAME DESCRIPTION AS ITEM # 4-11	20016510007	1	EACH	\$ 52.97	Devon Jones	D700 (Port and Company J754 - HUNTER GREEN ONLY)	Feury Image Group Inc

COUNTY OF ROCKLAND DGS – PURCHASING DEPARTMENT BLDG. A, 6TH FLOOR, 50 SANATORIUM ROAD POMONA, NY 10970 TELEPHONE NO.: 845-364-3820 FAX NO.: 845-364-3809								
LINE NO.	DESCRIPTION	ITEM NUMBER	EST. QTY. YEARLY	UNIT	UNIT PRICE	MANUFACTURER/BRAND NAME	STYLE NUMBER	VENDOR
4-14	JACKET- THREE SEASON CLASSIC Colors: Navy, Hunter Green, Black Size: 4XL SAME DESCRIPTION AS ITEM # 4-11	20016510008	1	EACH	\$ 54.59	Devon Jones	D700 (Port and Company J754 - HUNTER GREEN ONLY)	Feury Image Group Inc
4-15	JACKET- INDUSTRIAL PARKA W/ THINSULATE LINING Shell: 65% polyester/35% cotton, water repellent, Lining: 100% nylon, quilted to 3M Thinsulate body, hood and sleeves, detachable hood, zipper front with inner storm flap, inner drawstring waist, two hand pockets, rib knit cuffs, machine washable Embroidery or patch details may be requested at additional contracted prices Colors: Olive, Navy Sizes: Small, Medium, Large, X-Large Brand: Stealth 607C or approved equal	20016510009 DISCONTINUED	10	EACH	\$ 51.49	Stealth	607C	Feury Image Group Inc
4-16	JACKET- INDUSTRIAL PARKA W/ THINSULATE LINING Colors: Olive, Navy Sizes: 2XL, 3XL SAME DESCRIPTION AS ITEM # 4-15	20016510010 DISCONTINUED	3	EACH	\$ 59.18	Stealth	607C	Feury Image Group Inc

<p align="center"> COUNTY OF ROCKLAND DGS – PURCHASING DEPARTMENT BLDG. A, 6TH FLOOR, 50 SANATORIUM ROAD POMONA, NY 10970 TELEPHONE NO.: 845-364-3820 FAX NO.: 845-364-3809 </p>								
LINE NO.	DESCRIPTION	ITEM NUMBER	EST. QTY. YEARLY	UNIT	UNIT PRICE	MANUFACTURER/BRAND NAME	STYLE NUMBER	VENDOR
CATEGORY: RAINWEAR								
5-1	RAINSUIT, THREE PIECE, HI-VIZ, REFLECTIVE Color: Hi-Viz Fluorescent Lime Green with 2" Silver reflective tape. Detachable hood with drawstring, two side slash through pockets, Raglan sleeves, snap front closure with interlocking storm flap. Underarm vents, vented back for air circulation, Bib style overalls with adjustable elastic suspenders, safety fly with plastic snap closure, plastic take up snaps around leg cuffs and sleeves. Price to include Department logo screen printed on back in black. Sizes: Medium, Large, X-Large, XX-Large(2X) Neese Econo-Viz 1820S or approved equal.	20165000101	20	EACH	\$ 25.60	Neese	10182-55-1-HL1	PowerPak Civil and Safety LLC
5-2	RAINSUIT, THREE PIECE, HI-VIZ, REFLECTIVE Color: Hi-Viz floursescent lime green or yellow Size: 3X SAME DESCRIPTION AS ITEM # 5-1	20165000102	1	EACH	\$ 28.71	Neese	10182-55-1-HL1	PowerPak Civil and Safety LLC

<p align="center"> COUNTY OF ROCKLAND DGS – PURCHASING DEPARTMENT BLDG. A, 6TH FLOOR, 50 SANATORIUM ROAD POMONA, NY 10970 TELEPHONE NO.: 845-364-3820 FAX NO.: 845-364-3809 </p>								
LINE NO.	DESCRIPTION	ITEM NUMBER	EST. QTY. YEARLY	UNIT	UNIT PRICE	MANUFACTURER/BRAND NAME	STYLE NUMBER	VENDOR
5-3	RAINSUIT, THREE PIECE, HI-VIZ, REFLECTIVE Color: Hi-Viz flourescent lime green or yellow Size: 4X SAME DESCRIPTION AS ITEM # 5-1	20165000103	1	EACH	\$ 31.92	Neese	10182-55-1-HL1	PowerPak Civil and Safety LLC
5-4	RAIN JACKET, WATER RESISTANT PVC rain jacket with polyester lining and drawstring hood. snap closure, two large front pockets. Price to include Department name or logo screen printed on back. Color: Yellow Size: Small, Medium, Large, X-Large Rothco 3614 or approved equal.	20165000201	15	EACH	\$ 19.60	Rothco	3614	Feury Image Group Inc
5-5	RAIN JACKET, WATER RESISTANT Color: Yellow Size: 2XL SAME DESCRIPTION AS ITEM # 5-4	20165000202	4	EACH	\$ 21.17	Rothco	3614	Feury Image Group Inc

<p align="center"> COUNTY OF ROCKLAND DGS – PURCHASING DEPARTMENT BLDG. A, 6TH FLOOR, 50 SANATORIUM ROAD POMONA, NY 10970 TELEPHONE NO.: 845-364-3820 FAX NO.: 845-364-3809 </p>								
LINE NO.	DESCRIPTION	ITEM NUMBER	EST. QTY. YEARLY	UNIT	UNIT PRICE	MANUFACTURER/BRAND NAME	STYLE NUMBER	VENDOR
5-6	RAIN JACKET- MEN'S, WATERPROOF, BREATHABLE, WIND RESISTANT 100% Polyester, DWR finish, fully seam sealed, waterproof center front zipper, interior storm flap with chin guard, two front zippered pockets, machine washable Price to include Department name embroidered in white on left chest. Embroidery details be supplied at time of order. Must send embroidery "proof" for approval prior to production. Colors: Black, Navy Sizes: Small, Medium, Large, X-Large Port Authority J407 or approved equal	20165000203	45	EACH	\$ 38.61	Port Authority	J407	NYS Industries for the Disabled
5-7	RAIN JACKET- MEN'S, WATERPROOF, BREATHABLE, WIND RESISTANT Price to include Department name embroidered in white on left chest. Embroidery details be supplied at time of order. Must send embroidery "proof" for approval prior to production. Colors: Black, Navy Size: 2XL, 3XL SAME DESCRIPTION AS ITEM # 5-6	20165000204	10	EACH	\$ 40.02	Port Authority	J407	NYS Industries for the Disabled

<p align="center"> COUNTY OF ROCKLAND DGS – PURCHASING DEPARTMENT BLDG. A, 6TH FLOOR, 50 SANATORIUM ROAD POMONA, NY 10970 TELEPHONE NO.: 845-364-3820 FAX NO.: 845-364-3809 </p>								
LINE NO.	DESCRIPTION	ITEM NUMBER	EST. QTY. YEARLY	UNIT	UNIT PRICE	MANUFACTURER/BRAND NAME	STYLE NUMBER	VENDOR
5-8	RAIN JACKET- WOMEN'S, WATERPROOF, BREATHABLE, WIND RESISTANT 100% Polyester, DWR finish, fully seam sealed, waterproof center front zipper, interior storm flap with chin guard, two front zippered pockets, machine washable Price to include Department name embroidered in white on left chest. Embroidery details be supplied at time of order. Must send embroidery "proof" for approval prior to production. Colors: Black, Navy Sizes: Small, Medium, Large, X-Large Port Authority L407 or approved equal	20165000205	15	EACH	\$ 38.61	Port Authority	L407	NYS Industries for the Disabled
5-9	RAIN JACKET-WOMEN'S, WATERPROOF, BREATHABLE, WIND RESISTANT Price to include Department name embroidered in white on left chest. Embroidery details be supplied at time of order. Must send embroidery "proof" for approval prior to production. Colors: Black, Navy Size: XX-Large SAME DESCRIPTION AS ITEM # 5-8	20165000206	2	EACH	\$ 39.86	Port Authority	L407	NYS Industries for the Disabled

<p align="center"> COUNTY OF ROCKLAND DGS – PURCHASING DEPARTMENT BLDG. A, 6TH FLOOR, 50 SANATORIUM ROAD POMONA, NY 10970 TELEPHONE NO.: 845-364-3820 FAX NO.: 845-364-3809 </p>								
LINE NO.	DESCRIPTION	ITEM NUMBER	EST. QTY. YEARLY	UNIT	UNIT PRICE	MANUFACTURER/BRAND NAME	STYLE NUMBER	VENDOR
CATEGORY: KITCHEN CLOTHING								
6-1	SHIRTS, CHEF’S, SHORT SLEEVE 65% poly / 35% cotton poplin, wrinkle resistant finish, button closure (no snaps), one chest pocket, convertible collar, Color: White Size: Small, Medium, Large, X-Large, XX-Large Red Kap 5010 or approved equal.	20092780001	40	EACH	\$ 9.52	Red Kap	5010	Feury Image Group Inc
6-2	SHIRTS, CHEF’S, SHORT SLEEVE-WOMENS 65% poly / 35% cotton poplin, wrinkle resistant finish, button closure with gripper at neck(no snaps), one chest pocket, convertible collar, Color: White Size: Small, Medium, Large, X-Large, XX-Large Red Kap SP23 or approved equal.	20092780005	20	EACH	\$ 15.68	Red Kap	SP23	Feury Image Group Inc
6-3	COATS, CHEF’S, LONG SLEEVE 100% Polyester, 8 knot buttons (no snaps), breast pocket, thermometer pocket on left sleeve, wrinkle resistant finish. Color: White Size: Small, Medium, Large, X-Large, XX-Large Red Kap 0421 or approved equal.	20092300001	1	EACH	\$ 27.00	Red Kap	421	Feury Image Group Inc

<p align="center"> COUNTY OF ROCKLAND DGS – PURCHASING DEPARTMENT BLDG. A, 6TH FLOOR, 50 SANATORIUM ROAD POMONA, NY 10970 TELEPHONE NO.: 845-364-3820 FAX NO.: 845-364-3809 </p>								
LINE NO.	DESCRIPTION	ITEM NUMBER	EST. QTY. YEARLY	UNIT	UNIT PRICE	MANUFACTURER/BRAND NAME	STYLE NUMBER	VENDOR
6-4	PANTS, CHEF’S 65/35 poly/cotton, side-elastic waistband, two patch hip pockets and two and slant pockets, snap closure with brass zipper, wrinkle resistant. Size to be provided at time of order . Color: White and Black, Small Check Waist Size: 28-42, Inseam 28-34 Red Kap 2020BW or approved equal.	20092930001	30	PAIR	\$ 19.76	Red Kap	202BW	Feury Image Group Inc
CATEGORY: FOOTWEAR, RUBBER								
7-1	BOOTS RUBBER, OVER THE SHOE SLUSH BOOTS heavy duty cleated sole, fully lined, extra wide last, 17” height, top adjustable strap with buckle on top. Must be full cut for easy fit over work shoes. Color: Safety Yellow Sizes: 12-18, Full Size Hy-Grade SLB or approved equal	80016300002	15	PAIR	\$ 23.35	Rockland Slush	81712 Series	PowerPak Civil and Safety LLC

<p align="center"> COUNTY OF ROCKLAND DGS – PURCHASING DEPARTMENT BLDG. A, 6TH FLOOR, 50 SANATORIUM ROAD POMONA, NY 10970 TELEPHONE NO.: 845-364-3820 FAX NO.: 845-364-3809 </p>								
LINE NO.	DESCRIPTION	ITEM NUMBER	EST. QTY. YEARLY	UNIT	UNIT PRICE	MANUFACTURER/BRAND NAME	STYLE NUMBER	VENDOR
CATEGORY: MENS DRESS SHIRTS- BUTTON DOWN								
8-1	SHIRTS, MENS, EXECUTIVE DRESS, SHORT SLEEVE 65% poly/35% cotton, 4.0-4.25 oz. wt., soft, moisture wicking fabric, button down collar, easy care poplin, soil release and wrinkle resistant, machine washable. Price to include Employee's name to be embroidered above left pocket (average 6, 5/8" lettering) and Department Name or Employee title (maximum 25 letters) to be embroidered below the employees name. Patches can be added at contract prices. Colors: White, Tan, Black, Denim Blue, Royal, Gray Size: 14 - 17 ½ (S-M-L-XL) Edwards 1230 or approved equal.	20070400007	6	EACH	\$ 25.63	Edwards	1230	NYS Industries for the Disabled
8-2	SHIRTS, MENS, EXECUTIVE DRESS, SHORT SLEEVE Colors: White, Tan, Black, Denim Blue, Royal, Titanium Size: 18 - 18 ½ (2XL) SAME DESCRIPTION AS ITEM # 8-1	20070400008	1	EACH	\$ 29.65	Edwards	1230	NYS Industries for the Disabled
8-3	SHIRTS, MENS, EXECUTIVE DRESS, SHORT SLEEVE Colors: White, Tan, Black, Denim Blue, Royal, Titanium Size: 19 - 20 ½ (3XL-4XL) SAME DESCRIPTION AS ITEM # 8-1	20070400009	1	EACH	\$ 31.94	Edwards	1230	NYS Industries for the Disabled

<p align="center"> COUNTY OF ROCKLAND DGS – PURCHASING DEPARTMENT BLDG. A, 6TH FLOOR, 50 SANATORIUM ROAD POMONA, NY 10970 TELEPHONE NO.: 845-364-3820 FAX NO.: 845-364-3809 </p>								
LINE NO.	DESCRIPTION	ITEM NUMBER	EST. QTY. YEARLY	UNIT	UNIT PRICE	MANUFACTURER/BRAND NAME	STYLE NUMBER	VENDOR
8-4	SHIRTS, MENS, EXECUTIVE DRESS, LONG SLEEVE 65% poly/35% cotton, 4.0-4.25 oz. wt., soft, moisture wicking fabric, button down collar, easy care poplin, soil release and wrinkle resistant, machine washable. Price to include Employee's name to be embroidered above left pocket (average 6, 5/8" lettering) and Department Name or Employee title (maximum 25 letters) to be embroidered below the employees name. Patches can be added at contract prices. Colors: White, Tan, Navy, Black, Denim Blue, Royal, Gray Size: 14 - 17 ½ (S-M-L-XL) Edwards 1280 or approved equal.	20070400010	6	EACH	\$ 26.57	Edwards	1280	NYS Industries for the Disabled
8-5	SHIRTS, MENS, EXECUTIVE DRESS, LONG SLEEVE Colors: White, Tan, Navy, Black, Denim Blue, Royal, Gray Size: 18 - 18 ½ (2XL) SAME DESCRIPTION AS ITEM # 8-4	20070400011	1	EACH	\$ 30.85	Edwards	1280	NYS Industries for the Disabled
8-6	SHIRTS, MENS, EXECUTIVE DRESS, LONG SLEEVE Colors: White, Navy, Tan, Black, Denim Blue, Royal, Gray Size: 19 - 20 ½ (3XL-4XL) SAME DESCRIPTION AS ITEM # 8-4	20070400012	1	EACH	\$ 32.98	Edwards	1280	NYS Industries for the Disabled

<p align="center"> COUNTY OF ROCKLAND DGS – PURCHASING DEPARTMENT BLDG. A, 6TH FLOOR, 50 SANATORIUM ROAD POMONA, NY 10970 TELEPHONE NO.: 845-364-3820 FAX NO.: 845-364-3809 </p>								
LINE NO.	DESCRIPTION	ITEM NUMBER	EST. QTY. YEARLY	UNIT	UNIT PRICE	MANUFACTURER/BRAND NAME	STYLE NUMBER	VENDOR
8-7	SHIRT- POPLIN, LONG SLEEVE DRESS SHIRT Cotton/Polyester, minimum 55% cotton, button down collar, dyed to match buttons, left chest pocket Price to include 'County of Rockland' and/or Department name to be embroidered on left chest. Name to be supplied at time of order. Colors: White, Navy, Carolina Blue Sizes: Small , Medium, Large, X-Large Port Authority W100 or approved equal	20070870003	15	EACH	\$ 17.64	Port Authority	W100	Feury Image Group Inc
8-8	SHIRT- POPLIN, LONG SLEEVE DRESS SHIRT Colors: White, Navy, Carolina Blue Sizes: 2XL, 3XL SAME DESCRIPTION AS ITEM # 8-7	20070870004	2	EACH	\$ 21.93	Port Authority	W100	Feury Image Group Inc
CATEGORY: SWEATSHIRTS								
9-1	SWEAT SHIRTS, CREWNECK, SCREEN PRINTED Long Sleeve, Classic fit tubular body, Heavy Blend Cotton/Polyester, soft, ringspun yarn for reduced pilling, 1x1 rib with spandex for enhanced stretch and recovery. Price to include department name (5/8" lettering) or logo to be screening in white or black. Location to be determined at time of order. Logo design to be supplied at time of order. Color: Forest Green, Navy, Black Sizes: Small, Medium, Large, X-Large Gildan 18000 or approved equal.	20010880003	75	EACH	\$ 12.65	Gildan	18000	Feury Image Group Inc

<p align="center"> COUNTY OF ROCKLAND DGS – PURCHASING DEPARTMENT BLDG. A, 6TH FLOOR, 50 SANATORIUM ROAD POMONA, NY 10970 TELEPHONE NO.: 845-364-3820 FAX NO.: 845-364-3809 </p>								
LINE NO.	DESCRIPTION	ITEM NUMBER	EST. QTY. YEARLY	UNIT	UNIT PRICE	MANUFACTURER/BRAND NAME	STYLE NUMBER	VENDOR
9-2	SWEAT SHIRTS, CREWNECK, SCREEN PRINTED Colors: Forest Green, Navy, Black Size: XX-Large (2XL) SAME DESCRIPTION AS ITEM # 9-1	20010880004	30	EACH	\$ 15.12	Gildan	18000	Feury Image Group Inc
9-3	SWEAT SHIRTS, CREWNECK, SCREEN PRINTED Colors: Forest Green, Navy, Black Size: 3XL SAME DESCRIPTION AS ITEM # 9-1	20010880012	8	EACH	\$ 17.64	Gildan	18000	Feury Image Group Inc
9-4	SWEAT SHIRTS, CREWNECK, SCREEN PRINTED Colors: Forest Green, Navy, Black Size: 4XL SAME DESCRIPTION AS ITEM # 9-1	20010880001	4	EACH	\$ 17.64	Gildan	18000	Feury Image Group Inc

<p align="center"> COUNTY OF ROCKLAND DGS – PURCHASING DEPARTMENT BLDG. A, 6TH FLOOR, 50 SANATORIUM ROAD POMONA, NY 10970 TELEPHONE NO.: 845-364-3820 FAX NO.: 845-364-3809 </p>								
LINE NO.	DESCRIPTION	ITEM NUMBER	EST. QTY. YEARLY	UNIT	UNIT PRICE	MANUFACTURER/BRAND NAME	STYLE NUMBER	VENDOR
9-5	SWEAT SHIRTS, THERMAL LINED, HOODED WITH FRONT ZIPPER, INSULATED, SCREEN PRINTED Cotton/Nylon shell with thermal lining double layered with polyester fleece lining, hood with drawstring, rib knit cuffs and waistband, reinforced bartacks at stress points, durable nylon front zipper, two front pockets with media pocket. Price to include department name (5/8" lettering) or logo to be screened in white or black. Location to be determined at time of order. Logo design to be supplied at time of first order. Colors: Dark Green, Navy Sizes: Small, Medium, Large, X-Large, 2XL Berne SZ101 or approved equal.	20010870001	100	EACH	\$ 44.22	Berne	SZ101	NYS Industries for the Disabled
9-6	SWEAT SHIRTS, THERMAL LINED, HOODED WITH FRONT ZIPPER, INSULATED, SCREEN PRINTED Colors: Dark Green, Navy Sizes: 3XL, 4XL SAME DESCRIPTION AS ITEM # 9-5	20010870003	10	EACH	\$ 55.31	Berne	SZ101	NYS Industries for the Disabled
9-7	SWEAT SHIRTS, THERMAL LINED, HOODED WITH FRONT ZIPPER, INSULATED, SCREEN PRINTED Color: Navy Size: 5XL SAME DESCRIPTION AS ITEM # 9-5	20010870008	2	EACH	\$ 55.31	HARRITON	M711	NYS Industries for the Disabled

<p align="center"> COUNTY OF ROCKLAND DGS – PURCHASING DEPARTMENT BLDG. A, 6TH FLOOR, 50 SANATORIUM ROAD POMONA, NY 10970 TELEPHONE NO.: 845-364-3820 FAX NO.: 845-364-3809 </p>								
LINE NO.	DESCRIPTION	ITEM NUMBER	EST. QTY. YEARLY	UNIT	UNIT PRICE	MANUFACTURER/BRAND NAME	STYLE NUMBER	VENDOR
9-8	SWEAT SHIRTS, TALL, THERMAL LINED, HOODED WITH FRONT ZIPPER, INSULATED, SCREEN PRINTED Cotton/Nylon shell, double layered with polyester fleece lining, hood with drawstring, rib knit cuffs and waistband, reinforced bartacks at stress points, durable nylon front zipper, two front pockets with media pocket. Price to include department name (5/8" lettering) or logo to be screened in white or black. Location to be determined at time of order. Logo design to be supplied at time of first order. Colors: Dark Green, Navy Sizes: Large, X-Large, 2XL Berne SZ101-TALL or approved equal.	20010880113	5	EACH	\$ 50.71	Berne	SZ101-T	NYS Industries for the Disabled
9-9	SWEAT SHIRTS, HOODED WITH FRONT ZIPPER, SCREEN PRINTED Long sleeve, Preshrunk, Heavy Blend Cotton/Polyester, Classic fit, double needle pouch pockets for added reinforcement, 1X1 rib knit with spandex waistband and cuffs, metal zipper, drawcord hood, double needle stitching Price to include department name (5/8" lettering) or logo to be screened in white or black. Location to be determined at time of order. Logo design to be supplied at time of first order. Color: Dark Green, Navy, Safety Green Size: Small, Medium, Large, X-Large Gildan G18600 or approved equal.	20010870023	12	EACH	\$ 26.49	Gildan	18600	Feury Image Group Inc

<p align="center"> COUNTY OF ROCKLAND DGS – PURCHASING DEPARTMENT BLDG. A, 6TH FLOOR, 50 SANATORIUM ROAD POMONA, NY 10970 TELEPHONE NO.: 845-364-3820 FAX NO.: 845-364-3809 </p>								
LINE NO.	DESCRIPTION	ITEM NUMBER	EST. QTY. YEARLY	UNIT	UNIT PRICE	MANUFACTURER/BRAND NAME	STYLE NUMBER	VENDOR
9-10	SWEAT SHIRTS, HOODED WITH FRONT ZIPPER, SCREEN PRINTED Color: Dark Green, Navy, Safety Green Size: XX-Large (2XL) SAME DESCRIPTON AS ITEM # 9-9	20010870024	2	EACH	\$ 28.59	Gildan	18600	Feury Image Group Inc
9-11	SWEAT SHIRTS, HOODED WITH FRONT ZIPPER, SCREEN PRINTED Color: Dark Green, Navy, Safety Green Size: 3XL SAME DESCRIPTON AS ITEM # 9-9	20010870025	1	EACH	\$ 33.30	Gildan	18600	Feury Image Group Inc
9-12	SWEAT SHIRTS, HOODED WITH FRONT ZIPPER, SCREEN PRINTED Color: Dark Green, Navy, Safety Green Size: 4XL SAME DESCRIPTON AS ITEM # 9-9	20010870026	1	EACH	\$ 33.30	Gildan	18600	Feury Image Group Inc

<p align="center"> COUNTY OF ROCKLAND DGS – PURCHASING DEPARTMENT BLDG. A, 6TH FLOOR, 50 SANATORIUM ROAD POMONA, NY 10970 TELEPHONE NO.: 845-364-3820 FAX NO.: 845-364-3809 </p>								
LINE NO.	DESCRIPTION	ITEM NUMBER	EST. QTY. YEARLY	UNIT	UNIT PRICE	MANUFACTURER/BRAND NAME	STYLE NUMBER	VENDOR
9-13	SWEAT SHIRTS, PULLOVER WITH HOOD, IMPRINTED Long sleeve, Preshrunk, Heavy Blend Cotton/Polyester (minimum 50% cotton), Classic fit, double needle pouch pockets for added reinforcement, 1X1 rib knit w/ spandex waistband and cuffs, metal zipper, double-lined hood with drawcord Price to include department name (5/8" lettering) or logo to be screened in white or black. Location to be determined at time of order. Logo design to be supplied at time of first order. Color: Dark Green, Navy, Black, Safety Green Size: Small, Medium, Large, X-Large Gildan G18500 or approved equal.	20010870020	30	EACH	\$ 18.38	Gildan	18500	Feury Image Group Inc
9-14	SWEAT SHIRTS, PULLOVER WITH HOOD, IMPRINTED Color: Dark Green, Navy, Safety Green Size: XX-Large (2XL) SAME DESCRIPTION AS ITEM # 9-13	20010870021	10	EACH	\$ 22.88	Gildan	18500	Feury Image Group Inc
9-15	SWEAT SHIRTS, PULLOVER WITH HOOD, IMPRINTED Color: Dark Green, Navy, Safety Green Size: 3XL SAME DESCRIPTION AS ITEM # 9-13	20010870022	3	EACH	\$ 26.10	Gildan	18500	Feury Image Group Inc

COUNTY OF ROCKLAND DGS – PURCHASING DEPARTMENT BLDG. A, 6TH FLOOR, 50 SANATORIUM ROAD POMONA, NY 10970 TELEPHONE NO.: 845-364-3820 FAX NO.: 845-364-3809								
LINE NO.	DESCRIPTION	ITEM NUMBER	EST. QTY. YEARLY	UNIT	UNIT PRICE	MANUFACTURER/BRAND NAME	STYLE NUMBER	VENDOR
CATEGORY: MENS GOLF STYLE SHIRTS								
10-1	SHIRT, MENS POLO, PERFORMANCE, LONG SLEEVE WITH EMBROIDERY 100% polyester, Moisture Wicking, knit collar, 3 button, spandex enhanced knit cuffs, anti-microbial Price to include County logo with Department name embroidered on left chest. Embroidery details to be provided at time of order. Patches may be requested at additional contract price Colors: Navy, Forest, Royal, White Sizes: Small, Medium, Large, X-Large Core 365 style 88192 or approved equal	20010760020	20	EACH	\$ 21.00	Core 365	88192	NYS Industries for the Disabled
10-2	SHIRT, MENS POLO, PERFORMANCE, LONG SLEEVE WITH EMBROIDERY Colors: Navy, Forest, Royal, White Size: 2XL SAME DESCRIPTION AS ITEM # 10-1	20010760021	5	EACH	\$ 23.63	Core 365	88192	NYS Industries for the Disabled
10-3	SHIRT, MENS POLO, PERFORMANCE, LONG SLEEVE WITH EMBROIDERY Colors: Navy, Forest, Royal, White Size: 3XL SAME DESCRIPTION AS ITEM # 10-1	20010760028	1	EACH	\$ 24.94	Core 365	88192	NYS Industries for the Disabled

<p align="center"> COUNTY OF ROCKLAND DGS – PURCHASING DEPARTMENT BLDG. A, 6TH FLOOR, 50 SANATORIUM ROAD POMONA, NY 10970 TELEPHONE NO.: 845-364-3820 FAX NO.: 845-364-3809 </p>								
LINE NO.	DESCRIPTION	ITEM NUMBER	EST. QTY. YEARLY	UNIT	UNIT PRICE	MANUFACTURER/BRAND NAME	STYLE NUMBER	VENDOR
10-4	SHIRT, TALL MENS POLO, PERFORMANCE, LONG SLEEVE WITH EMBROIDERY 100% polyester, Moisture Wicking, knit collar, 3 button, spandex enhanced knit cuffs, anti-microbial, TALL SIZES Price to include County logo with Department name embroidered on left chest. Embroidery details to be provided at time of order. Patches may be requested at additional contract price Color: Navy Sizes: Large (LT), XLT, 2XT Core 365 style 88192T or approved equal	20010760029	2	EACH	\$ 23.63	Core 365	88192T	NYS Industries for the Disabled
10-5	SHIRT, MENS POLO, PERFORMANCE, SHORT SLEEVE WITH EMBROIDERY 100% polyester, Moisture Wicking, knit collar, 3 button, spandex enhanced knit cuffs, anti-microbial Price to include County logo and/or Department name embroidered on left chest. Embroidery details to be provided at time of order. Patches may be requested at additional contract price Colors: Navy, Forest, Royal, White, Burgundy, Safety Yellow Sizes: Small, Medium, Large, X-Large Core 365 style 88181 or approved equal	20010760030	25	EACH	\$ 17.06	Core 365	88181	NYS Industries for the Disabled

<p align="center"> COUNTY OF ROCKLAND DGS – PURCHASING DEPARTMENT BLDG. A, 6TH FLOOR, 50 SANATORIUM ROAD POMONA, NY 10970 TELEPHONE NO.: 845-364-3820 FAX NO.: 845-364-3809 </p>								
LINE NO.	DESCRIPTION	ITEM NUMBER	EST. QTY. YEARLY	UNIT	UNIT PRICE	MANUFACTURER/BRAND NAME	STYLE NUMBER	VENDOR
10-6	SHIRT, MENS POLO, PERFORMANCE, SHORT SLEEVE WITH EMBROIDERY Colors: Navy, Forest, Royal, White, Burgundy, Safety Yellow Size: XX-Large (2XL) SAME DESCRIPTION AS ITEM # 10-5	20010760031	5	EACH	\$ 18.38	Core 365	88181	NYS Industries for the Disabled
10-7	SHIRT, MENS POLO, PERFORMANCE, SHORT SLEEVE WITH EMBROIDERY Colors: Navy, Forest, Royal, White, Burgundy, Safety Yellow Size: 3XL SAME DESCRIPTION AS ITEM # 10-5	20010760032	1	EACH	\$ 18.38	Core 365	88181	NYS Industries for the Disabled
10-8	SHIRT, MENS POLO, TALL, PERFORMANCE, SHORT SLEEVE WITH EMBROIDERY 100% polyester, Moisture Wicking, knit collar, 3 button, spandex enhanced knit cuffs, anti-microbial, TALL SIZES Price to include County logo and/or Department name embroidered on left chest. Embroidery details to be provided at time of order. Patches may be requested at additional contract price Colors: Navy, Royal, White Sizes: Large (LT), XLT, 2XT Core 365 style 88181T or approved equal	20010760033	5	EACH	\$ 19.69	Core 365	88181T	NYS Industries for the Disabled

<p align="center"> COUNTY OF ROCKLAND DGS – PURCHASING DEPARTMENT BLDG. A, 6TH FLOOR, 50 SANATORIUM ROAD POMONA, NY 10970 TELEPHONE NO.: 845-364-3820 FAX NO.: 845-364-3809 </p>								
LINE NO.	DESCRIPTION	ITEM NUMBER	EST. QTY. YEARLY	UNIT	UNIT PRICE	MANUFACTURER/BRAND NAME	STYLE NUMBER	VENDOR
10-9	SHIRTS, POLO W/ POCKET, SHORT SLEEVES , TWO LOCATION EMBROIDERY Cotton/Polyester (minimum 50% cotton) knit Jersey, 5 oz-6 oz, pre-shrunk, 2 or 3 button placket, knit collar, repels water and oil-based spills, double needle hem Price to include ‘County of Rockland’ or Department name to be embroidered on left chest above pocket. Single name of employee to be embroidered in white on right chest (average six letters). Embroidery details, shirt size and color to be supplied at time of order. Colors: Royal Blue, Light blue, White, Navy, Burgundy, Forest Green Size: Small, Medium, Large, X-Large Jerzees 436MPR or approved equal.	20010760005	15	EACH	\$ 22.09	Jerzees	436MPR	NYS Industries for the Disabled
10-10	SHIRTS, POLO W/ POCKET, SHORT SLEEVES with TWO LOCATION EMBROIDERY Colors: Royal Blue, Light blue, White, Navy, Burgundy, Forest Green Size: XX-Large (2XL) SAME DESCRIPTION AS ITEM # 10-9	20010760006	10	EACH	\$ 25.14	Jerzees	436MPR	NYS Industries for the Disabled
10-11	SHIRTS, POLO W/ POCKET, SHORT SLEEVES with TWO LOCATION EMBROIDERY Colors: Royal Blue, Light blue, White, Navy, Burgundy, Forest Green Size: 3XL SAME DESCRIPTION AS ITEM # 10-9	20010760007	4	EACH	\$ 27.34	Jerzees	436MPR	NYS Industries for the Disabled

<p align="center"> COUNTY OF ROCKLAND DGS – PURCHASING DEPARTMENT BLDG. A, 6TH FLOOR, 50 SANATORIUM ROAD POMONA, NY 10970 TELEPHONE NO.: 845-364-3820 FAX NO.: 845-364-3809 </p>								
LINE NO.	DESCRIPTION	ITEM NUMBER	EST. QTY. YEARLY	UNIT	UNIT PRICE	MANUFACTURER/BRAND NAME	STYLE NUMBER	VENDOR
10-12	SHIRTS, POLO W/ POCKET, SHORT SLEEVES with TWO LOCATION EMBROIDERY Colors: Royal Blue, Light blue, White, Navy, Burgundy, Forest Green Size: 4XL SAME DESCRIPTION AS ITEM # 10-9	20010760008	1	EACH	\$ 27.34	Jerzees	436MPR	NYS Industries for the Disabled
10-13	SHIRTS, POLO W/ POCKET, SHORT SLEEVES with ONE LOCATION SCREENPRINT Preshrunk Cotton/Polyester knit Jersey, 5 oz-7 oz, 2 or 3 button placket, knit collar, double needle hem Price to include Department name for be screen printed above pocket in 5/8" white or black lettering. Department name, shirt size and color supplied at time of order. Colors: Royal Blue, Safety Green, Light blue, White, Navy, Burgundy Size: Small, Medium, Large, X-Large Jerzees 436MPR or approved equal.	20010760001	25	EACH	\$ 15.27	Jerzees	436MPR	NYS Industries for the Disabled
10-14	SHIRTS, POLO W/ POCKET, SHORT SLEEVES w/ ONE LOCATION SCREENPRINT Colors: Royal Blue, Safety Green, Light blue, White, Navy, Burgundy Size: XX-Large (2XL) SAME DESCRIPTION AS ITEM # 10-13	20010760002	6	EACH	\$ 18.26	Jerzees	436MPR	NYS Industries for the Disabled

<p align="center"> COUNTY OF ROCKLAND DGS – PURCHASING DEPARTMENT BLDG. A, 6TH FLOOR, 50 SANATORIUM ROAD POMONA, NY 10970 TELEPHONE NO.: 845-364-3820 FAX NO.: 845-364-3809 </p>								
LINE NO.	DESCRIPTION	ITEM NUMBER	EST. QTY. YEARLY	UNIT	UNIT PRICE	MANUFACTURER/BRAND NAME	STYLE NUMBER	VENDOR
10-15	SHIRTS, POLO W/ POCKET, SHORT SLEEVES w/ ONE LOCATION SCREENPRINT Colors: Royal Blue, Safety Green, Light blue, White, Navy, Burgundy Size: 3XL SAME DESCRIPTION AS ITEM # 10-13	20010760003	1	EACH	\$ 20.36	Jerzees	436MPR	NYS Industries for the Disabled
10-16	SHIRTS, POLO W/ POCKET, SHORT SLEEVES w/ ONE LOCATION SCREENPRINT Colors: Royal Blue, Safety Green, Light blue, White, Navy, Burgundy Size: 4XL SAME DESCRIPTION AS ITEM # 10-13	20010760004	1	EACH	\$ 20.36	Jerzees	436MPR	NYS Industries for the Disabled
10-17	SHIRTS, POLO W/ POCKET, SHORT SLEEVES with EMBROIDERY AND PATCH APPLICATION Preshrunk Cotton/Polyester knit Jersey, 4.5 oz-7 oz, 2 or 3 button placket, knit collar, double needle hem, stain resistant finish Price to include Employee name embroidered above pocket (average six letters) Departmental patch to be sewn on (County to supply patches). Departmental patch location, name of employee, shirt color and size to be supplied at time of order Colors: Royal Blue, Safety Green, Light blue, White, Navy, Burgundy Size: Small, Medium, Large, X-Large Jerzees 436MPR or approved equal.	20010760009	20	EACH	\$ 17.89	Jerzees	436MPR	NYS Industries for the Disabled

<p align="center"> COUNTY OF ROCKLAND DGS – PURCHASING DEPARTMENT BLDG. A, 6TH FLOOR, 50 SANATORIUM ROAD POMONA, NY 10970 TELEPHONE NO.: 845-364-3820 FAX NO.: 845-364-3809 </p>								
LINE NO.	DESCRIPTION	ITEM NUMBER	EST. QTY. YEARLY	UNIT	UNIT PRICE	MANUFACTURER/BRAND NAME	STYLE NUMBER	VENDOR
10-18	SHIRTS, POLO W/ POCKET, SHORT SLEEVES with EMBROIDERY AND PATCH APPLICATION Colors: Royal Blue, Safety Green, Light blue, White, Navy, Burgundy Size: XX-Large (2XL) SAME DESCRIPTION AS ITEM# 10-17	20010760010	2	EACH	\$ 21.84	Jerzees	436MPR	NYS Industries for the Disabled
10-19	SHIRTS, POLO W/ POCKET, SHORT SLEEVES with EMBROIDERY AND PATCH APPLICATION Colors: Royal Blue, Safety Green, Light blue, White, Navy, Burgundy Size: 3XL SAME DESCRIPTION AS ITEM# 10-17	20010760011	1	EACH	\$ 23.67	Jerzees	436MPR	NYS Industries for the Disabled
10-20	SHIRTS, POLO W/ POCKET, SHORT SLEEVES with EMBROIDERY AND PATCH APPLICATION Colors: Royal Blue, Safety Green, Light blue, White, Navy, Burgundy Size: 4XL SAME DESCRIPTION AS ITEM# 10-17	20010760012	1	EACH	\$ 23.67	Jerzees	436MPR	NYS Industries for the Disabled

<p align="center"> COUNTY OF ROCKLAND DGS – PURCHASING DEPARTMENT BLDG. A, 6TH FLOOR, 50 SANATORIUM ROAD POMONA, NY 10970 TELEPHONE NO.: 845-364-3820 FAX NO.: 845-364-3809 </p>								
LINE NO.	DESCRIPTION	ITEM NUMBER	EST. QTY. YEARLY	UNIT	UNIT PRICE	MANUFACTURER/BRAND NAME	STYLE NUMBER	VENDOR
10-21	SHIRTS, POLO W/ POCKET, SHORT SLEEVES with TWO LOCATION EMBROIDERY AND PATCH APPLICATION Preshrunk Cotton/Polyester knit Jersey, 4.5 oz-7 oz, 2 or 3 button placket, knit collar, double needle hem Price to include ‘County of Rockland’ to be embroidered on left chest above pocket, Employee name to be embroidered in white on right chest (average six letters). Patch to be sewn on right shoulder. Name, color and size to be supplied at time of order. Colors: Light Blue, Navy, White, Safety Green Size: Small, Medium, Large, X-Large Jerzees 436MPR or approved equal.	20010760013	40	EACH	\$ 23.67	Jerzees	436MPR	NYS Industries for the Disabled
10-22	SHIRTS, POLO W/ POCKET, SHORT SLEEVES with TWO LOCATION EMBROIDERY AND PATCH APPLICATION Colors: Light Blue, Navy, White, Safety Green Size: XX-LARGE (2XL) SAME DESCRIPTION AS ITEM# 10-21	20010760014	10	EACH	\$ 26.18	Jerzees	436MPR	NYS Industries for the Disabled
10-23	SHIRTS, POLO W/ POCKET, SHORT SLEEVES with TWO LOCATION EMBROIDERY AND PATCH APPLICATION Colors: Light Blue, Navy, White, Safety Green Size: 3XL SAME DESCRIPTION AS ITEM# 10-21	20010760015	5	EACH	\$28.40	Jerzees	436MPR	NYS Industries for the Disabled

COUNTY OF ROCKLAND DGS – PURCHASING DEPARTMENT BLDG. A, 6TH FLOOR, 50 SANATORIUM ROAD POMONA, NY 10970 TELEPHONE NO.: 845-364-3820 FAX NO.: 845-364-3809								
LINE NO.	DESCRIPTION	ITEM NUMBER	EST. QTY. YEARLY	UNIT	UNIT PRICE	MANUFACTURER/BRAND NAME	STYLE NUMBER	VENDOR
MENS T-SHIRTS								
11-1	SHIRTS-T, CREW NECK WITH POCKET, SHORT SLEEVES, SCREEN PRINTED ONE LOCATION Heavyweight cotton, 6.0 oz-7oz. sq/yd, 100% cotton, classic fit, tubular body, pocket on left chest, double needle pocket sleeve and hem Price to include Department name to be screen printed above pocket in 5/8" white lettering. Department name to be supplied at time of order. Shirt size and color to be provided at time of order Color: Black, Lt. Blue, Navy Size: Small, Medium, Large, X-Large Gildan 2300 or approved equal.	20070840001	130	EACH	\$ 8.84	Gildan	2300	Feury Image Group Inc
11-2	SHIRTS-T, CREW NECK WITH POCKET, SHORT SLEEVES, SCREEN PRINTED ONE LOCATION Size: 2XL SAME DESCRIPTION AS ITEM # 11-1	20070840002	35	EACH	\$ 11.71	Gildan	2300	Feury Image Group Inc
11-3	SHIRTS-T, CREW NECK WITH POCKET, SHORT SLEEVES, SCREEN PRINTED ONE LOCATION Size: 3XL SAME DESCRIPTION AS ITEM # 11-1	20070840003	12	EACH	\$ 14.08	Gildan	2300	Feury Image Group Inc

COUNTY OF ROCKLAND DGS – PURCHASING DEPARTMENT BLDG. A, 6TH FLOOR, 50 SANATORIUM ROAD POMONA, NY 10970 TELEPHONE NO.: 845-364-3820 FAX NO.: 845-364-3809								
LINE NO.	DESCRIPTION	ITEM NUMBER	EST. QTY. YEARLY	UNIT	UNIT PRICE	MANUFACTURER/BRAND NAME	STYLE NUMBER	VENDOR
11-4	SHIRTS-T, CREW NECK WITH POCKET, SHORT SLEEVES, SCREEN PRINTED ONE LOCATION Size: 4XL SAME DESCRIPTION AS ITEM # 11-1	20070840004	6	EACH	\$ 14.08	Gildan	2300	Feury Image Group Inc
11-5	SHIRTS-T, CREW NECK WITH POCKET, SHORT SLEEVES, SCREEN PRINTED ONE LOCATION Size: 5XL SAME DESCRIPTION AS ITEM # 11-1	20070840010	3	EACH	\$ 14.08	Gildan	2300	Feury Image Group Inc
11-6	SHIRTS-T, CREW NECK WITH POCKET, SHORT SLEEVES, SCREEN PRINTED <u>TWO</u> LOCATIONS Heavyweight cotton, 6.0 oz-7oz. sq/yd, 100% cotton, classic fit, tubular body, pocket on left chest, double needle pocket sleeve and hem Price to include <u>two</u> location screen printing. Locations to be determined at time of order. Any logo design to be supplied at time of first order. Shirt color and size to be provided at time of order. Color: Black, Lt. Blue, Navy, Forest Green, Safety Green Size: Small, Medium, Large, X-Large Gildan 2300 or approved equal.	20070840012	175	EACH	\$ 8.84	Gildan	2300	Feury Image Group Inc

<p align="center"> COUNTY OF ROCKLAND DGS – PURCHASING DEPARTMENT BLDG. A, 6TH FLOOR, 50 SANATORIUM ROAD POMONA, NY 10970 TELEPHONE NO.: 845-364-3820 FAX NO.: 845-364-3809 </p>								
LINE NO.	DESCRIPTION	ITEM NUMBER	EST. QTY. YEARLY	UNIT	UNIT PRICE	MANUFACTURER/BRAND NAME	STYLE NUMBER	VENDOR
11-7	SHIRTS-T, CREW NECK WITH POCKET, SHORT SLEEVES, SCREEN PRINTED TWO LOCATIONS Color: Black, Lt. Blue, Navy, Spruce Green, Safety Green Size: 2XL SAME DESCRIPTION AS ITEM # 11-6	20070840013	30	EACH	\$ 11.71	Gildan	2300	Feury Image Group Inc
11-8	SHIRTS-T, CREW NECK WITH POCKET, SHORT SLEEVES, SCREEN PRINTED TWO LOCATIONS Color: Black, Lt. Blue, Navy, Spruce Green, Safety Green Size: 3XL SAME DESCRIPTION AS ITEM # 11-6	20070840019	10	EACH	\$ 14.08	Gildan	2300	Feury Image Group Inc
11-9	SHIRTS-T, CREW NECK WITH POCKET, SHORT SLEEVES, SCREEN PRINTED ONE LOCATION LOGO Heavyweight cotton, 6.0 oz-7oz. sq/yd, 100% cotton, classic fit, tubular body, pocket on left chest, double needle pocket sleeve and hem Price to include Department Logo to be screen printed in black on full back or right chest. Any logo design to be supplied at time of first order. Shirt color and sizes to be provided at time of order. Color: Black, Navy, Lt. Blue Size: Small, Medium, Large, X-Large Gildan 2300 or approved equal.	20070840005	25	EACH	\$ 8.84	Gildan	2300	Feury Image Group Inc

<p align="center"> COUNTY OF ROCKLAND DGS – PURCHASING DEPARTMENT BLDG. A, 6TH FLOOR, 50 SANATORIUM ROAD POMONA, NY 10970 TELEPHONE NO.: 845-364-3820 FAX NO.: 845-364-3809 </p>								
LINE NO.	DESCRIPTION	ITEM NUMBER	EST. QTY. YEARLY	UNIT	UNIT PRICE	MANUFACTURER/BRAND NAME	STYLE NUMBER	VENDOR
11-10	SHIRTS-T, CREW NECK WITH POCKET, SHORT SLEEVES, SCREEN PRINTED ONE LOCATION LOGO Color: Black, Navy, Lt. Blue Size: 2XL SAME DESCRIPTION AS ITEM # 11-9	20070840006	10	EACH	\$ 11.71	Gildan	2300	Feury Image Group Inc
11-11	SHIRTS-T, CREW NECK WITH POCKET, SHORT SLEEVES, SCREEN PRINTED ONE LOCATION LOGO Color: Black, Navy, Lt. Blue Size: 3XL SAME DESCRIPTION AS ITEM # 11-9	20070840007	2	EACH	\$ 14.08	Gildan	2300	Feury Image Group Inc
11-12	SHIRTS-T, CREW NECK WITH POCKET, SHORT SLEEVES, SCREEN PRINTED ONE LOCATION LOGO Color: Black, Navy, Lt. Blue Size: 4XL SAME DESCRIPTION AS ITEM # 11-9	20070840008	2	EACH	\$ 14.08	Gildan	2300	Feury Image Group Inc

<p align="center"> COUNTY OF ROCKLAND DGS – PURCHASING DEPARTMENT BLDG. A, 6TH FLOOR, 50 SANATORIUM ROAD POMONA, NY 10970 TELEPHONE NO.: 845-364-3820 FAX NO.: 845-364-3809 </p>								
LINE NO.	DESCRIPTION	ITEM NUMBER	EST. QTY. YEARLY	UNIT	UNIT PRICE	MANUFACTURER/BRAND NAME	STYLE NUMBER	VENDOR
11-13	SHIRTS-T, LONG SLEEVE CREW NECK WITH POCKET, SCREEN PRINTED IN ONE LOCATION 100% cotton 6.0 oz-7oz., or 50% cotton/50% polyester, rib collar, classic fit, tubular body, pocket on left chest, double needle pocket and hem, rib cuffs Price to include Department name to be screen printed on left chest above pocket. Department name, shirt color and sizes to be provided at time of order. Color: Black, Navy, Safety Green Size: Small, Medium, Large, X-Large Gildan 2410 or approved equal.	20070870005	50	EACH	\$ 12.64	Gildan	2410	Feury Image Group Inc
11-14	SHIRTS-T, LONG SLEEVE CREW NECK WITH POCKET, SCREEN PRINTED ONE LOCATION Color: Black, Navy, Safety Green Size: 2XL SAME DESCRIPTION AS ITEM # 11-13	20070870006	20	EACH	\$ 15.03	Gildan	2410	Feury Image Group Inc
11-15	SHIRTS-T, LONG SLEEVE CREW NECK WITH POCKET, SCREEN PRINTED ONE LOCATION Color: Black, Navy, Safety Green Size: 3XL SAME DESCRIPTION AS ITEM # 11-13	20070870007	10	EACH	\$ 17.75	Gildan	2410	Feury Image Group Inc
11-16	SHIRTS-T, LONG SLEEVE CREW NECK WITH POCKET, SCREEN PRINTED ONE LOCATION Color: Black, Navy, Safety Green Size: 4XL SAME DESCRIPTION AS ITEM # 11-13	20070870008	5	EACH	\$ 17.75	Gildan	2410	Feury Image Group Inc

<p align="center"> COUNTY OF ROCKLAND DGS – PURCHASING DEPARTMENT BLDG. A, 6TH FLOOR, 50 SANATORIUM ROAD POMONA, NY 10970 TELEPHONE NO.: 845-364-3820 FAX NO.: 845-364-3809 </p>								
LINE NO.	DESCRIPTION	ITEM NUMBER	EST. QTY. YEARLY	UNIT	UNIT PRICE	MANUFACTURER/BRAND NAME	STYLE NUMBER	VENDOR
11-17	SHIRTS-T, MEN'S PERFORMANCE CREW, SCREENPRINTED 100% polyester, short sleeves, no pocket, Dry Zone, moisture-wicking technology, UPF 50, minimum 3.8 oz. fabric Department logo to be screened in blue, black or white on full back or front chest. Department logo and location supplied at time of order. Special care must be taken throughout the screen printing process due to nature of this fabric. Colors: Navy, Gray Concrete, Neon Yellow Sizes: X-Small, Small, Medium, Large, X-Large Port & Company PC380 or approved equal	20070870009	20	EACH	\$ 4.79	Port Authority	PC380	Feury Image Group Inc
11-18	SHIRTS-T, MEN'S PERFORMANCE CREW, SCREENPRINTED Department logo to be screened in blue, black or white on full back or front chest. Department logo and location supplied at time of order. Special care must be taken throughout the screen printing process due to nature of this fabric. Colors: Navy, Gray Concrete, Neon Yellow Sizes: 2XL, 3XL, 4XL SAME DESCRIPTION AS ITEM # 11-17	20070870010	5	EACH	\$ 7.79	Port Authority	PC380	Feury Image Group Inc

<p align="center"> COUNTY OF ROCKLAND DGS – PURCHASING DEPARTMENT BLDG. A, 6TH FLOOR, 50 SANATORIUM ROAD POMONA, NY 10970 TELEPHONE NO.: 845-364-3820 FAX NO.: 845-364-3809 </p>								
LINE NO.	DESCRIPTION	ITEM NUMBER	EST. QTY. YEARLY	UNIT	UNIT PRICE	MANUFACTURER/BRAND NAME	STYLE NUMBER	VENDOR
11-19	SHIRTS-T, LONG SLEEVE CREW NECK WITH POCKET, SCREEN PRINTED IN TWO LOCATIONS 100% pre-shrunk cotton 6.0 oz-7oz, rib crew neck, classic fit, pocket on left chest, double needle hem, rib cuffs Price to include Department name to be screen printed in white, on left chest above pocket (5/8" letters) and logo on full back. Color: Navy, Forest Green, Light Blue Size: Small, Medium, Large, X-Large Hanes 5596 or approved equal.	20070870011	15	EACH	\$ 12.47	Hanes	5596	Feury Image Group Inc
11-20	SHIRTS-T, LONG SLEEVE CREW NECK WITH POCKET, SCREEN PRINTED IN TWO LOCATIONS Color: Navy, Forest Green, Light Blue Size: 2XL, 3XL SAME DESCRIPTION AS ITEM # 11-19	20070870012	5	EACH	\$ 17.41	Hanes	5596	Feury Image Group Inc
CATEGORY: WORK CLOTHING (MATCHING)								

COUNTY OF ROCKLAND
DGS – PURCHASING DEPARTMENT
BLDG. A, 6TH FLOOR, 50 SANATORIUM ROAD
POMONA, NY 10970
TELEPHONE NO.: 845-364-3820
FAX NO.: 845-364-3809

LINE NO.	DESCRIPTION	ITEM NUMBER	EST. QTY. YEARLY	UNIT	UNIT PRICE	MANUFACTURER/BRAND NAME	STYLE NUMBER	VENDOR
12-1	PANTS, MENS, INDUSTRIAL, FINISHED LENGTHS To Match shirts below (Items 12-6 through 12-13) 7.5 oz. twill minimum weight, 65% Polyester/ 35% cotton twill, wrinkle resistant, 2 side pockets, 2 back pockets, heavy-duty brass zipper front with button closure, belt loops, double stitched, no cuffs. Colors: Black, Brown, Dark Green, Navy, Tan Size: Waist 28 – 42, Length 28 – 36 Brands: Red Kap PT20 or approved equal. GCA not approved equal.	20044550001	70	PAIR	\$ 18.99	Red Kap NOT RENEWED AS OF 12/06/2023	PT20	Emergency Responder Products
12-2	PANTS, MENS, INDUSTRIAL, FINISHED LENGTHS Colors: Black, Brown, Dark Green, Navy, Tan Size: Waist 44 – 50, Length 28 – 36 SAME DESCRIPTION AS ITEM # 12-1	20044550002	4	PAIR	\$ 18.99	Red Kap NOT RENEWED AS OF 12/06/2023	PT20	Emergency Responder Products
12-3	PANTS, MENS, INDUSTRIAL, FINISHED LENGTHS Colors: Black, Brown, Dark Green, Navy, Tan Size: Waist 52 and Up, Length 28–36 SAME DESCRIPTION AS ITEM # 12-1	20044550003	1	PAIR	\$ 20.99	Red Kap NOT RENEWED AS OF 12/06/2023	PT20	Emergency Responder Products

<p style="text-align: center;"> COUNTY OF ROCKLAND DGS – PURCHASING DEPARTMENT BLDG. A, 6TH FLOOR, 50 SANATORIUM ROAD POMONA, NY 10970 TELEPHONE NO.: 845-364-3820 FAX NO.: 845-364-3809 </p>								
LINE NO.	DESCRIPTION	ITEM NUMBER	EST. QTY. YEARLY	UNIT	UNIT PRICE	MANUFACTURER/BRAND NAME	STYLE NUMBER	VENDOR
12-4	PANTS, MENS, INDUSTRIAL, CARGO, FINISHED LENGTHS Minimum weight:7-1/2 oz., 65% Polyester 35% cotton twill. Wrinkle resistant, 2 slack-style front pockets, 2 set-in hip pockets, left has button closure, darts over hip pockets, 2 patch leg pockets with flap and snap, heavy-duty brass zipper and button closure Colors: Black, Charcoal, Navy, Khaki Size: Waist 28 – 42, Length 28 – 36 Brands: Red Kap PT88 or approved equal.	20044550004	100	PAIR	\$ 23.65	Red Kap NOT RENEWED AS OF 12/06/2023	PT88	Emergency Responder Products
12-5	PANTS, MENS INDUSTRIAL, CARGO, FINISHED LENGTHS Colors: Black, Charcoal, Navy, Khaki Size: Waist 44 – 50, Length 28 – 36 SAME DESCRIPTION AS ITEM # 12-4	20044550005	10	PAIR	\$ 23.65	Red Kap NOT RENEWED AS OF 12/06/2023	PT88	Emergency Responder Products
12-6	SHIRTS, MENS, SHORT SLEEVE, INDUSTRIAL, SOLID, BUTTON DOWN, REGULAR AND LONG To Match above pants (Items 12-1 through 12-5). 4.25 oz. minimum weight, 65% polyester/ 35% cotton, poplin, Wrinkle Resistant, Moisture Wicking, Color Retention, button front, 2 button through chest pockets. Price to include sewing departmental patch above left pocket. Patch supplied by County at time of order Colors: Black, Brown, Dark Green, Navy, Tan, White Size: Small, Medium, Large, X-Large Brands: Red Kap SP24-SOLID or approved equal. GCA not approved equal.	20092800001	24	EACH	\$ 14.67	Red Kap NOT RENEWED AS OF 12/06/2023	SP24	Emergency Responder Products

<p align="center"> COUNTY OF ROCKLAND DGS – PURCHASING DEPARTMENT BLDG. A, 6TH FLOOR, 50 SANATORIUM ROAD POMONA, NY 10970 TELEPHONE NO.: 845-364-3820 FAX NO.: 845-364-3809 </p>								
LINE NO.	DESCRIPTION	ITEM NUMBER	EST. QTY. YEARLY	UNIT	UNIT PRICE	MANUFACTURER/BRAND NAME	STYLE NUMBER	VENDOR
12-7	SHIRTS, MENS, SHORT SLEEVE, INDUSTRIAL, SOLID, BUTTON DOWN, REGULAR AND LONG Colors: Black, Brown, Dark Green, Navy, Tan, White Size: 2XL To Match above pants (Items 12-1 through 12-5). SAME DESCRIPTION AS ITEM# 12-6	20092800002	5	EACH	\$ 14.67	Red Kap NOT RENEWED AS OF 12/06/2023	SP24	Emergency Responder Products
12-8	SHIRTS, MENS, SHORT SLEEVE, INDUSTRIAL, SOLID, BUTTON DOWN, REGULAR AND LONG Colors: Black, Brown, Dark Green, Navy, Tan, White Size: 3XL To Match above pants (Items 12-1 through 12-5). SAME DESCRIPTION AS ITEM# 12-6	20092800003	5	EACH	\$ 14.67	Red Kap NOT RENEWED AS OF 12/06/2023	SP24	Emergency Responder Products
12-9	SHIRTS, MENS, SHORT SLEEVE, INDUSTRIAL, SOLID, BUTTON DOWN, REGULAR AND LONG Colors: Black, Brown, Dark Green, Navy, Tan, White Size: 4XL To Match above pants (Items 12-1 through 12-5). SAME DESCRIPTION AS ITEM# 12-6	20092800004	1	EACH	\$ 14.67	Red Kap NOT RENEWED AS OF 12/06/2023	SP24	Emergency Responder Products

COUNTY OF ROCKLAND DGS – PURCHASING DEPARTMENT BLDG. A, 6TH FLOOR, 50 SANATORIUM ROAD POMONA, NY 10970 TELEPHONE NO.: 845-364-3820 FAX NO.: 845-364-3809								
LINE NO.	DESCRIPTION	ITEM NUMBER	EST. QTY. YEARLY	UNIT	UNIT PRICE	MANUFACTURER/BRAND NAME	STYLE NUMBER	VENDOR
12-10	SHIRTS, MENS, LONG SLEEVE, INDUSTRIAL, SOLID, BUTTON DOWN, REGULAR AND LONG To Match above pants (Items 12-1 through 12-5) 4.25 oz. minimum weight, 65% polyester/ 35% cotton, poplin, Wrinkle Resistant, Moisture Wicking, Color Retention, button front, 2 button through chest pockets. Price to include sewing departmental patch above left pocket. Patch supplied by County at time of order Colors: Black, Brown, Dark Green, Navy, Tan, White Size: Small, Medium, Large, X-Large Brands: Red Kap SP14-SOLID or approved equal. GCA not approved equal.	20092770001	35	EACH	\$ 16.67	Red Kap NOT RENEWED AS OF 12/06/2023	SP14	Emergency Responder Products
12-11	SHIRTS, MENS, LONG SLEEVE, INDUSTRIAL, SOLID, BUTTON DOWN, REGULAR AND LONG Colors: Black, Brown, Dark Green, Navy, Tan, White Size: 2XL To Match above pants (Items 12-1 through 12-5). SAME DESCRIPTION AS ITEM# 12-10	20092770002	12	EACH	\$ 16.67	Red Kap NOT RENEWED AS OF 12/06/2023	SP14	Emergency Responder Products

COUNTY OF ROCKLAND DGS – PURCHASING DEPARTMENT BLDG. A, 6TH FLOOR, 50 SANATORIUM ROAD POMONA, NY 10970 TELEPHONE NO.: 845-364-3820 FAX NO.: 845-364-3809								
LINE NO.	DESCRIPTION	ITEM NUMBER	EST. QTY. YEARLY	UNIT	UNIT PRICE	MANUFACTURER/BRAND NAME	STYLE NUMBER	VENDOR
12-12	SHIRTS, MENS, LONG SLEEVE, INDUSTRIAL, SOLID, BUTTON DOWN, REGULAR AND LONG Colors: Black, Brown, Dark Green, Navy, Tan, White Size: 3XL To Match above pants (Items 12-1 through 12-5). SAME DESCRIPTION AS ITEM# 12-10	20092770003	5	EACH	\$ 16.67	Red Kap NOT RENEWED AS OF 12/06/2023	SP14	Emergency Responder Products
12-13	SHIRTS, MENS, LONG SLEEVE, INDUSTRIAL, SOLID, BUTTON DOWN, REGULAR AND LONG Colors: Black, Brown, Dark Green, Navy, Tan, White Size: 4XL To Match above pants (Items 12-1 through 12-5). SAME DESCRIPTION AS ITEM# 12-11	20092770004	1	EACH	\$ 16.67	Red Kap NOT RENEWED AS OF 12/06/2023	SP14	Emergency Responder Products
CATEGORY: REFLECTIVE APPAREL								
13-1	SHIRTS, MENS, REFLECTIVE, HI-VISIBILITY SHORT SLEEVE WORK SHIRT, REGULAR AND TALL 49.2 Colors: Fluorescent Yellow Size: Small, Medium, Large, X-Large Brands: Red Kap SY24-HV-TRC2 or approved equal. GCA not approved equal.	20092801001	35	EACH	\$ 46.20	Red Kap	SY24 HV (Reg & Tall)	The Liberty Store

<p align="center"> COUNTY OF ROCKLAND DGS – PURCHASING DEPARTMENT BLDG. A, 6TH FLOOR, 50 SANATORIUM ROAD POMONA, NY 10970 TELEPHONE NO.: 845-364-3820 FAX NO.: 845-364-3809 </p>								
LINE NO.	DESCRIPTION	ITEM NUMBER	EST. QTY. YEARLY	UNIT	UNIT PRICE	MANUFACTURER/BRAND NAME	STYLE NUMBER	VENDOR
13-2	SHIRTS, MENS, REFLECTIVE, HI-VISIBILITY SHORT SLEEVE WORK SHIRT, REGULAR AND TALL Colors: Fluorescent Yellow Size: 2XL SAME DESCRIPTION AS ITEM # 13-1	20092801002	15	EACH	\$ 48.20	Red Kap	SY24 HV (Reg & Tall)	The Liberty Store
13-3	SHIRTS, MENS, REFLECTIVE, HI-VISIBILITY SHORT SLEEVE WORK SHIRT, REGULAR Colors: Fluorescent Yellow Size: 3XL SAME DESCRIPTION AS ITEM # 13-1	20092801003	10	EACH	\$ 48.20	Red Kap	SY24 HV (Reg)	The Liberty Store
13-4	SHIRTS, MENS, REFLECTIVE, HI-VISIBILITY SHORT SLEEVE WORK SHIRT, REGULAR Colors: Fluorescent Yellow Size: 4XL SAME DESCRIPTION AS ITEM # 13-1	20092801004	1	EACH	\$ 49.20	Red Kap	SY24 HV (Reg)	The Liberty Store
13-5	SHIRTS, MENS, REFLECTIVE, HI-VISIBILITY LONG SLEEVE WORK SHIRT, REGULAR AND TALL 54.20 Colors: Fluorescent Yellow Size: Small, Medium, Large, X-Large Brands: Red Kap SY14-HV-TRC2 or approved equal. GCA not approved equal.	20092770101	40	EACH	\$ 49.20	Red Kap	SY24 HV (Reg & Tall)	The Liberty Store

<p align="center"> COUNTY OF ROCKLAND DGS – PURCHASING DEPARTMENT BLDG. A, 6TH FLOOR, 50 SANATORIUM ROAD POMONA, NY 10970 TELEPHONE NO.: 845-364-3820 FAX NO.: 845-364-3809 </p>								
LINE NO.	DESCRIPTION	ITEM NUMBER	EST. QTY. YEARLY	UNIT	UNIT PRICE	MANUFACTURER/BRAND NAME	STYLE NUMBER	VENDOR
13-6	SHIRTS, MENS, REFLECTIVE, HI-VISIBILITY LONG SLEEVE WORK SHIRT, REGULAR AND TALL Colors: Fluorescent Yellow Size: 2XL SAME DESCRIPTION AS ITEM # 13-5	20092770102	10	EACH	\$ 49.20	Red Kap	SY24 HV (Reg & Tall)	The Liberty Store
13-7	SHIRTS, MENS, REFLECTIVE, HI-VISIBILITY LONG SLEEVE WORK SHIRT, REGULAR Colors: Fluorescent Yellow Size: 3XL, 4XL SAME DESCRIPTION AS ITEM # 13-5	20092770103	6	EACH	\$ 52.20	Red Kap	SY14-HV	The Liberty Store
13-8	SHIRTS, MENS, REFLECTIVE, HI-VISIBILITY LONG SLEEVE WORK SHIRT, REGULAR Colors: Fluorescent Yellow Size: XXXX-Large (4XL) SAME DESCRIPTION AS ITEM # 13-5	20092770104	1	EACH	\$ 54.20	Red Kap	SY14-HV	The Liberty Store
13-9	SHIRTS-T, CREW NECK, ANSI CLASS 2, SHORT SLEEVE 100% ANSI wicking polyester, with 2" Silver Safety Reflective striping, pocket on left chest, ANSI R CLASS 2 Price to include Department logo screened in black on full back or right chest. Department logo and location supplied at time of order. Color: Fluorescent Yellow or Lime Size: Small, Medium, Large, X-Large, XX-Large (2X) Occunomix LUX-SSETP2B or approved equal	20070000006	100	EACH	\$ 12.05	Occunomi	LUX-SSETP2B	PowerPak Civil and Safety LLC

<p align="center"> COUNTY OF ROCKLAND DGS – PURCHASING DEPARTMENT BLDG. A, 6TH FLOOR, 50 SANATORIUM ROAD POMONA, NY 10970 TELEPHONE NO.: 845-364-3820 FAX NO.: 845-364-3809 </p>								
LINE NO.	DESCRIPTION	ITEM NUMBER	EST. QTY. YEARLY	UNIT	UNIT PRICE	MANUFACTURER/BRAND NAME	STYLE NUMBER	VENDOR
13-10	SHIRTS-T, CREW NECK, ANSI CLASS 2, SHORT SLEEVE Price to include Department logo screened in black on full back or right chest. Department logo and location supplied at time of order. Color: Flourescent Yellow or Lime Size: 3X, 4X, 5X SAME DESCRIPTION AS ITEM # 13-9	20070000008	24	EACH	\$ 12.06	Occunomix	LUX-SSETP2B	PowerPak Civil and Safety LLC
13-11	SHIRTS-T, CREW NECK, ANSI CLASS 2, LONG SLEEVE 100% ANSI wicking polyester, with 2" Silver Safety Reflective striping, ANSI R Class 2 Price to include Department logo screened in black on full back or right chest. Department logo and location supplied at time of order. Color: Flourescent Yellow Sizes: Small, Medium, Large, X-Large, XX-Large(2X) Occunomix LUX-LSET2B or approved equal	20070000011	50	EACH	\$ 18.42	Occunomix	LUX-LSET2B	PowerPak Civil and Safety LLC
13-12	SHIRTS-T, CREW NECK, ANSI CLASS 2, LONG SLEEVE Price to include Department logo screened in black on full back or right chest. Department logo and location supplied at time of order. Color: Flourescent Yellow Size: 3X, 4X, 5X SAME DESCRIPTION AS ITEM # 13-11	20070000012	10	EACH	\$ 18.42	Occunomix	LUX-LSET2B	PowerPak Civil and Safety LLC

COUNTY OF ROCKLAND DGS – PURCHASING DEPARTMENT BLDG. A, 6TH FLOOR, 50 SANATORIUM ROAD POMONA, NY 10970 TELEPHONE NO.: 845-364-3820 FAX NO.: 845-364-3809								
LINE NO.	DESCRIPTION	ITEM NUMBER	EST. QTY. YEARLY	UNIT	UNIT PRICE	MANUFACTURER/BRAND NAME	STYLE NUMBER	VENDOR
13-13	VEST-ANSI TYPE R CLASS 3 MESH BREAKAWAY WITH 2-TONE STRIPING, SHORT SLEEVES 100% Breathable mesh, 2" Retroreflective striping, 360-degree visibility on body and sleeves, break away safety feature, Clear ID pouch, zipper closure, D-Ring access slot, 8 pockets Colors: Safety Yellow with Safety Orange & reflective striping Sizes Small, Medium, Large, XL, 2XL, 3XL, 4XL Powerpak 82570-82575 or approved equal	34579000013	40	EACH	\$ 17.04	PP Rockland	82570-82575	PowerPak Civil and Safety LLC
CATEGORY: MANUFACTURER DISCOUNTS- Embroidery or Screen Print or Patches to be added at contract prices								
14-1	BRAND: CARHARTT- MEN'S -Must provide a Manufacturer's current List Price with bid submission. % Discount must be entered as a whole number (e.g. 20% =.20) If NO Discount is offered, must enter 0	20092	500.00	% Discount		NO AWARD		
14-2	BRAND: CARHARTT- WOMEN'S -Must provide a Manufacturer's current List Price with bid submission. % Discount must be entered as a whole number (e.g. 20% =.20) If NO Discount is offered, must enter 0	20092	500.00	% Discount				

<p align="center"> COUNTY OF ROCKLAND DGS – PURCHASING DEPARTMENT BLDG. A, 6TH FLOOR, 50 SANATORIUM ROAD POMONA, NY 10970 TELEPHONE NO.: 845-364-3820 FAX NO.: 845-364-3809 </p>								
LINE NO.	DESCRIPTION	ITEM NUMBER	EST. QTY. YEARLY	UNIT	UNIT PRICE	MANUFACTURER/BRAND NAME	STYLE NUMBER	VENDOR
14-3	BRAND: UTILITY PRO -Must provide a Manufacturer's current List Price with bid submission. % Discount must be entered as a whole number (e.g. 20% =.20) If NO Discount is offered, must enter 0	20092	500.00	% Discount	% Discount	NO AWARD		
14-4	BRAND: OCCUNOMIX -Must provide a Manufacturer's current List Price with bid submission. % Discount must be entered as a whole number (e.g. 20% =.20) If NO Discount is offered, must enter 0	20092930003	500.00	% Discount	30% Discount	Occunomix NOT RENEWED AS OF 12/06/2023	All	Emergency Responder Products
14-5	BRAND: DICKIES -Must provide a Manufacturer's current List Price with bid submission. % Discount must be entered as a whole number (e.g. 20% =.20) If NO Discount is offered, must enter 0	20092930004	500.00	% Discount	20% Discount	Dickies NOT RENEWED AS OF 12/06/2023	All	Emergency Responder Products
14-6	BRAND: RED KAP -Must provide a Manufacturer's current List Price with bid submission. % Discount must be entered as a whole number (e.g. 20% =.20) If NO Discount is offered, must enter 0	20092930005	500.00	% Discount	20% Discount	Red Kap NOT RENEWED AS OF 12/06/2023	All	Emergency Responder Products

<p align="center"> COUNTY OF ROCKLAND DGS – PURCHASING DEPARTMENT BLDG. A, 6TH FLOOR, 50 SANATORIUM ROAD POMONA, NY 10970 TELEPHONE NO.: 845-364-3820 FAX NO.: 845-364-3809 </p>								
LINE NO.	DESCRIPTION	ITEM NUMBER	EST. QTY. YEARLY	UNIT	UNIT PRICE	MANUFACTURER/BRAND NAME	STYLE NUMBER	VENDOR
14-7	BRAND: BERNE -Must provide a Manufacturer's current List Price with bid submission. % Discount must be entered as a whole number (e.g. 20% =.20) If NO Discount is offered, must enter 0	20092	500.00	% Discount	<hr/> % Discount	NO AWARD		
14.8	BRAND: TRI-MOUNTAIN -Must provide a Manufacturer's current List Price with bid submission. % Discount must be entered as a whole number (e.g. 20% =.20) If NO Discount is offered, must enter 0	20092	500.00	% Discount	<hr/> % Discount			

<p align="center"> COUNTY OF ROCKLAND DGS – PURCHASING DEPARTMENT BLDG. A, 6TH FLOOR, 50 SANATORIUM ROAD POMONA, NY 10970 TELEPHONE NO.: 845-364-3820 FAX NO.: 845-364-3809 </p>								
LINE NO.	DESCRIPTION	ITEM NUMBER	EST. QTY. YEARLY	UNIT	UNIT PRICE	MANUFACTURER/BRAND NAME	STYLE NUMBER	VENDOR
	CATEGORY: THE FOLLOWING ITEMS (15-1 THROUGH 15-33) WILL BE AWARDED EFFECTIVE DECEMBER 6, 2022							
15-1	SWEATSHIRT, ANSI CLASS 3 TYPE R, CREW NECK, IMPRINTED 100% Polyester Fleece (8.5-9.5 oz), long sleeve, 2" Silver reflective striping, elastic ribbed waistband and cuffs Price to include department name (5/8" lettering) or logo to be screen printed in black or white. Location to be determined at time of order. Logo design and size to be supplied at time of order. Color: Flourescent Yellow Size: Small, Medium, Large, X-Large, XX-large (2X) Occunomix LUX-CSWT or approved equal	20010880013	55	EACH	\$ 30.08	Occumonix	LUX-CSWT	PowerPak Civil and Safety LLC

COUNTY OF ROCKLAND DGS – PURCHASING DEPARTMENT BLDG. A, 6TH FLOOR, 50 SANATORIUM ROAD POMONA, NY 10970 TELEPHONE NO.: 845-364-3820 FAX NO.: 845-364-3809								
LINE NO.	DESCRIPTION	ITEM NUMBER	EST. QTY. YEARLY	UNIT	UNIT PRICE	MANUFACTURER/BRAND NAME	STYLE NUMBER	VENDOR
15-2	SWEATSHIRT, ANSI CLASS 3 TYPE R, CREW NECK, IMPRINTED Price to include department name (5/8" lettering) or logo to be screen printed in black or white. Location to be determined at time of order. Logo design and size to be supplied at time of order. Color: Flourescent Yellow Size: 3X, 4X, 5X SAME DESCRIPTION AS ITEM # 15-1	20010880015	10	EACH	\$ 30.08	Occumonix	LUX-CSWT	PowerPak Civil and Safety LLC

COUNTY OF ROCKLAND DGS – PURCHASING DEPARTMENT BLDG. A, 6TH FLOOR, 50 SANATORIUM ROAD POMONA, NY 10970 TELEPHONE NO.: 845-364-3820 FAX NO.: 845-364-3809								
LINE NO.	DESCRIPTION	ITEM NUMBER	EST. QTY. YEARLY	UNIT	UNIT PRICE	MANUFACTURER/BRAND NAME	STYLE NUMBER	VENDOR
15-3	SWEATSHIRT, ANSI CLASS 3 TYPE R, HOODED W/ FRONT ZIPPER , IMPRINTED 100% polyester fleece (8.5-9.5 oz) long sleeve, ANSI Class 3-Type R, with 2" Silver Safety Reflective striping, elastic cuffs and waist, two lower front pockets Price to include department name (5/8" lettering) or logo to be screen printed in black or white. Location to be determined at time of order. Logo design and size to be supplied at time of order. Color: Flourescent Yellow Size: Small, Medium, Large, X-Large, XX-Large(2X) Occumonix LUX-HZSWT or approved equal	20010870027	15	EACH	\$ 40.92	Occumonix	LUX-HZSWT	PowerPak Civil and Safety LLC

<p align="center"> COUNTY OF ROCKLAND DGS – PURCHASING DEPARTMENT BLDG. A, 6TH FLOOR, 50 SANATORIUM ROAD POMONA, NY 10970 TELEPHONE NO.: 845-364-3820 FAX NO.: 845-364-3809 </p>								
LINE NO.	DESCRIPTION	ITEM NUMBER	EST. QTY. YEARLY	UNIT	UNIT PRICE	MANUFACTURER/BRAND NAME	STYLE NUMBER	VENDOR
15-4	<p>SWEATSHIRT, ANSI CLASS 3 TYPE R, HOODED W/ FRONT ZIPPER , IMPRINTED</p> <p>Price to include department name (5/8" lettering) or logo to be screen printed in black or white. Location to be determined at time of order. Logo design and size to be supplied at time of order.</p> <p>Color: Flourescent Yellow</p> <p>Sizes: 3X, 4X, 5X</p> <p>SAME DESCRIPTION AS ITEM # 15-3</p>	20010870029	5	EACH	\$ 40.92	Occumonix	LUX-HZSWT	PowerPak Civil and Safety LLC

<p align="center"> COUNTY OF ROCKLAND DGS – PURCHASING DEPARTMENT BLDG. A, 6TH FLOOR, 50 SANATORIUM ROAD POMONA, NY 10970 TELEPHONE NO.: 845-364-3820 FAX NO.: 845-364-3809 </p>								
LINE NO.	DESCRIPTION	ITEM NUMBER	EST. QTY. YEARLY	UNIT	UNIT PRICE	MANUFACTURER/BRAND NAME	STYLE NUMBER	VENDOR
15-5	<p>SWEATSHIRT, ANSI CLASS 3, THERMAL LINED, HOODED W/ FRONT ZIPPER, IMPRINTED 100% heavy weight polyester fleece, long sleeve, metal zipper, with 2" Silver Safety Reflective striping, knit cuffs and waist, two lower front pockets, Teflon fabric protector, metal zippers</p> <p>Price to include department name (5/8" lettering) or logo to be screen printed in black or white. Location to be determined at time of order. Logo design to be supplied at time of order.</p> <p>Color: Flourescent Yellow</p> <p>Size: Small, Medium, large, X-Large, XX-Large(2XL)</p> <p>VEA-603-ST-LB, Utility Pro UHV425 or approved equal</p>	34579000001	50	EACH	\$ 75.41	Reflective Apparel	VEA-603-ST-LB	Feury Image Group Inc

COUNTY OF ROCKLAND DGS – PURCHASING DEPARTMENT BLDG. A, 6TH FLOOR, 50 SANATORIUM ROAD POMONA, NY 10970 TELEPHONE NO.: 845-364-3820 FAX NO.: 845-364-3809								
LINE NO.	DESCRIPTION	ITEM NUMBER	EST. QTY. YEARLY	UNIT	UNIT PRICE	MANUFACTURER/BRAND NAME	STYLE NUMBER	VENDOR
15-6	SWEATSHIRT, ANSI CLASS 3, THERMAL LINED, HOODED W/ FRONT ZIPPER, IMPRINTED Price to include department name (5/8" lettering) or logo to be screen printed in black or white. Location to be determined at time of order. Logo design to be supplied at time of order. Color: Flourescent Yellow Sizes: 3XL, 4XL, 5XL SAME DESCRIPTION AS ITEM # 15-5	34579000003	6	EACH	\$ 75.41	Reflective Apparel	VEA-603-ST-LB	Feury Image Group Inc
15-7	BEANIE- Hi-Viz Knit Cap, 100% acrylic knit, polyester fleece lining, silver reflective stripe. Color to be specified at time of order Colors: Yellow, Black Size: one size fits all Occumonix LUX-KCR-Y-P, LUX-KCR-B-P or approved equal	34579000005	35	EACH	\$ 6.21	Occumonix	LUX-KCR-Y-P	PowerPak Civil and Safety LLC

<p style="text-align: center;"> COUNTY OF ROCKLAND DGS – PURCHASING DEPARTMENT BLDG. A, 6TH FLOOR, 50 SANATORIUM ROAD POMONA, NY 10970 TELEPHONE NO.: 845-364-3820 FAX NO.: 845-364-3809 </p>								
LINE NO.	DESCRIPTION	ITEM NUMBER	EST. QTY. YEARLY	UNIT	UNIT PRICE	MANUFACTURER/BRAND NAME	STYLE NUMBER	VENDOR
15-8	HAT- AVIATOR High Visibility hat, Adjustable chin strap, 100% polyester, Lining: 100% polyester with 40g of 3M thinsulate insulation, reflective stripe, stitched up sherpa trimmed visor, wind resistant, Color: Flourescent Green Size: Medium, Large, X-Large Tough Duck, style # i15516, Petra Roc TTH-LHV or approved equal	34579000006	24	EACH	\$ 13.99	Petra-Roc NOT RENEWED AS OF 12/06/2023	TTH	Emergency Responder Products
15-9	JACKET, WINDBREAKER- ANSI 3 , High Visibility, 2" silver reflective tape, shell: 100% polyester with polyurethane back coating, Lining: 100% polyester brushed tricot, wind and water resistant, snap front closure with collar, elasticized cuffs, two front pockets, drawcord waist Price is to include sewing of departmental patches. Patches to be supplied by the county at time of order Color: Flourescent Yellow or lime Size: Small, Medium, Large, X-Large, XX-Large Liberty 561-MFL, Utility Pro UHV600 or approved equal	20016550014	8	EACH	\$ 28.24	Liberty NOT RENEWED AS OF 12/06/2023	561MFL	Emergency Responder Products

COUNTY OF ROCKLAND
DGS – PURCHASING DEPARTMENT
BLDG. A, 6TH FLOOR, 50 SANATORIUM ROAD
POMONA, NY 10970
TELEPHONE NO.: 845-364-3820
FAX NO.: 845-364-3809

LINE NO.	DESCRIPTION	ITEM NUMBER	EST. QTY. YEARLY	UNIT	UNIT PRICE	MANUFACTURER/BRAND NAME	STYLE NUMBER	VENDOR
15-10	JACKET, WINDBREAKER- ANSI 3, Price is to include sewing of departmental patches. Patches to be supplied by the county at time of order Color: Flourescent Yellow or lime Sizes 3XL, 4XL, 5XL SAME DESCRIPTION AS ITEM # 15-9	20016550011	3	EACH	\$ 39.99	Liberty NOT RENEWED AS OF 12/06/2023	561MFL	Emergency Responder Products
15-11	JACKET, WINTER 5 IN 1 PARKA ANSI CLASS 3-TYPE R 300 Denier, PVC coated polyester, waterproof with sealed seams, 2" reflective striping, removable and reversible quilted bodywarmer, 100% weatherproof material. Attached hood that rolls into collar. Ribbed inner cuffs. Heavy-duty zipper front with snap storm flap. fleece lined lower pockets and one inside pocket on outer shell, two outer pockets and 2 inner pockets on inside warmer, Mic Tabs Price to include screening of 2" non-reflective letters. Department name and location to be supplied at time of order. Color: Fluorescent yellow Size: Small, Medium, Large, X-Large, XX-Large(2X) Occunomix LUX-TJFS or approved equal	20016320001	8	EACH	\$ 99.00	Occunomix NOT RENEWED AS OF 12/06/2023	LUX-TJFS	Emergency Responder Products

<p align="center"> COUNTY OF ROCKLAND DGS – PURCHASING DEPARTMENT BLDG. A, 6TH FLOOR, 50 SANATORIUM ROAD POMONA, NY 10970 TELEPHONE NO.: 845-364-3820 FAX NO.: 845-364-3809 </p>								
LINE NO.	DESCRIPTION	ITEM NUMBER	EST. QTY. YEARLY	UNIT	UNIT PRICE	MANUFACTURER/BRAND NAME	STYLE NUMBER	VENDOR
15-12	JACKET, WINTER 5 IN 1 PARKA ANSI CLASS3-TYPE R Price to include screening of 2” non-reflective letters. Department name and location to be supplied at time of order. Color: Fluorescent yellow Sizes: 3X, 4X, 5X SAME DESCRIPTION AS ITEM # 15-11	20016320003	3	EACH	\$ 99.00	Occumonix NOT RENEWED AS OF 12/06/2023	LUX-TJFS	Emergency Responder Products
15-13	JACKET- BOMBER JACKET HIGH VISIBILITY ANSI CLASS 3 Rip- Stop polyester 300D coated waterproof shell with tapes seams, Double front storm flap zipper closure, water tight D-Ring access, zip out 280 gram fleece lining with inner liner pockets and adjustable, detachable hideaway hood, elastic cuffs and elastic waist, Clear ID pocket and pocket for radio or cell phone, Color: Hi Vis Yellow Sizes: Small, Medium, Large, X-Large, 2XL Protective Industrial Products- Style # 333-1770-LY or approved equal Occunomix LUX-ETJBJR is <u>not</u> an approved equal	34579000007	40	EACH	\$ 79.26	Rockland	82147	PowerPak Civil and Safety LLC

<p align="center"> COUNTY OF ROCKLAND DGS – PURCHASING DEPARTMENT BLDG. A, 6TH FLOOR, 50 SANATORIUM ROAD POMONA, NY 10970 TELEPHONE NO.: 845-364-3820 FAX NO.: 845-364-3809 </p>								
LINE NO.	DESCRIPTION	ITEM NUMBER	EST. QTY. YEARLY	UNIT	UNIT PRICE	MANUFACTURER/BRAND NAME	STYLE NUMBER	VENDOR
15-14	JACKET- BOMBER JACKET HIGH VISIBILITY ANSI CLASS 3 Color: Hi Vis Yellow Sizes: 3XL, 4XL, 5XL SAME DESCRIPTION AS ITEM # 15-13 Protective Industrial Products- Style # 333-1770-LY or approved equal Occunomix LUX-ETJBJR is <u>not</u> an approved equal	34579000008	5	EACH	\$ 83.55	Rockland	82149	PowerPak Civil and Safety LLC
15-15	RAINSUIT SET- High Visibility ANSI Type R Class 3, lightweight PU coated 100% polyester (150 Denier) with taped seams, 2" nylon reflective tape, 5# Hi-viz nylon yellow zipper with storm flap Color: High Visibilty Yellow Sizes: S/M, L/XL Protective Industrial Products- Style # 353-1000LY or approved equal	34579000009	20	EACH	\$ 39.42	PIP	353-1000	PowerPak Civil and Safety LLC
15-16	RAINSUIT SET- High Visibility ANSI type R Class 3 Color: High Visibilty Yellow Sizes: 2XL/3XL SAME DESCRIPTION AS ITEM # 15-15	34579000010	5	EACH	\$ 39.42	PIP	353-1000	PowerPak Civil and Safety LLC

<p align="center"> COUNTY OF ROCKLAND DGS – PURCHASING DEPARTMENT BLDG. A, 6TH FLOOR, 50 SANATORIUM ROAD POMONA, NY 10970 TELEPHONE NO.: 845-364-3820 FAX NO.: 845-364-3809 </p>								
LINE NO.	DESCRIPTION	ITEM NUMBER	EST. QTY. YEARLY	UNIT	UNIT PRICE	MANUFACTURER/BRAND NAME	STYLE NUMBER	VENDOR
15-17	VEST, ANSI CLASS 2 mesh front and back, 8 pockets, reinforced with two-tone reflective stripes and contract trim edge, zipper closure, 100% polyester Color: High Visibility Yellow Sizes: Small, Medium, Large, X-Large, 2XL, 3XL Rockland style # 82274 or approved equal	34579000012	25	EACH	\$ 8.67	Rockland	82274	PowerPak Civil and Safety LLC
15-18	VEST, SURVEYORS -ANSI Class 2 solid front and mesh back, 10 pockets and one clear ID pocket, microphone tab near shoulder, reinforced with two-tone reflective stripes and contrast trim edge, zipper closure, 100% polyester Color: High Visibility Yellow Sizes: Small, ,Medium, Large, X-Large, XX-Large Rockland style # 81778 or approved equal	34579000011	25	EACH	\$ 8.78	Rockland	81778	PowerPak Civil and Safety LLC
15-19	BEANIE, RIB KNIT FOLD UP CUFF HAT 100% Acrylic stretch knit, covers head and ears Colors: Navy, Black Size: One-Size Fits Most Carhartt, style #A18, or approved equal	20147000001	25	EACH	\$ 19.60	Carhartt NOT RENEWED AS OF 12/06/2023	A18 (CTA205)	Emergency Responder Products

<p align="center"> COUNTY OF ROCKLAND DGS – PURCHASING DEPARTMENT BLDG. A, 6TH FLOOR, 50 SANATORIUM ROAD POMONA, NY 10970 TELEPHONE NO.: 845-364-3820 FAX NO.: 845-364-3809 </p>								
LINE NO.	DESCRIPTION	ITEM NUMBER	EST. QTY. YEARLY	UNIT	UNIT PRICE	MANUFACTURER/BRAND NAME	STYLE NUMBER	VENDOR
15-20	JACKET, COLD WEATHER- stain, windproof and water resistant polyester, Nylon or cotton, minimum 11.2oz. anti-pilling micro fleece lining, minimum 3oz. quilted polyfill or pile lining, adjustable fleece lined detachable hood and outer storm flap heavy duty zipper front, rib knit cuffs, approximate length 35" (sz XL), front pockets, inside chest pocket, washable, Price is to include sewing of department's patches or screening of department name across the back. Color, patches, and location will be supplied by the County at time of order. Colors: Navy, Black, Dark Green Sizes: Small, Medium, Large, X-Large Tri-Mountain 9900 or approved equal	20016000004	8	EACH	\$ 88.50	Core 365 NOT RENEWED AS OF 12/06/2023	88205	Emergency Responder Products
15-21	JACKET, COLD WEATHER- Price to include sewing of department's patches or screening of department name across the back. Color, patches, and location will be supplied by the County at time of order. Colors: Navy, Black, Dark Green Sizes: 2XL, 3XL SAME DESCRIPTION AS ITEM # 15-20	20016000006	2	EACH	\$ 94.75	Core 365 NOT RENEWED AS OF 12/06/2023	88205	Emergency Responder Products

COUNTY OF ROCKLAND
DGS – PURCHASING DEPARTMENT
BLDG. A, 6TH FLOOR, 50 SANATORIUM ROAD
POMONA, NY 10970
TELEPHONE NO.: 845-364-3820
FAX NO.: 845-364-3809

LINE NO.	DESCRIPTION	ITEM NUMBER	EST. QTY. YEARLY	UNIT	UNIT PRICE	MANUFACTURER/BRAND NAME	STYLE NUMBER	VENDOR
15-22	VEST- FLEECE VEST WITH ONE LOCATION EMBROIDERY 100% soft polyester fleece (minimum 8 oz.), non-pilling , full front zipper, binding around armholes, bottom hem with drawcord and toggles, two front zip pockets, highly breathable Price to include Department name or logo in embroidery on left chest. Additional embroidery or patches may be added at contract prices Hunter, Navy Small, Medium, Large, X-Large, 2XL, 3XL Harrington M985 or approved equal	20016000005	20	EACH	\$ 26.25	Harriton NOT RENEWED AS OF 12/06/2023	M985	Emergency Responder Products

COUNTY OF ROCKLAND
DGS – PURCHASING DEPARTMENT
BLDG. A, 6TH FLOOR, 50 SANATORIUM ROAD
POMONA, NY 10970
TELEPHONE NO.: 845-364-3820
FAX NO.: 845-364-3809

LINE NO.	DESCRIPTION	ITEM NUMBER	EST. QTY. YEARLY	UNIT	UNIT PRICE	MANUFACTURER/BRAND NAME	STYLE NUMBER	VENDOR
15-23	SHIRTS-T, WOMEN'S PERFORMANCE CREW, IMPRINTED 100% polyester, short sleeves, no pocket, Dry Zone, moisture-wicking technology, UPF 50, minimum 3.8 oz. fabric Department logo to be screened in blue or white on full back or front chest. Department logo and location supplied at time of order. Special care must be taken throughout the screen printing process due to nature of this fabric. Colors: Navy, silver gray Sizes: X-Small, Small, Medium, Large, X-Large, XX-Large Port & Company LPC380 or approved equal	20070840020	5	EACH	\$ 12.99	Port & Company NOT RENEWED AS OF 12/06/2023	LPC380	Emergency Responder Products

COUNTY OF ROCKLAND
DGS – PURCHASING DEPARTMENT
BLDG. A, 6TH FLOOR, 50 SANATORIUM ROAD
POMONA, NY 10970
TELEPHONE NO.: 845-364-3820
FAX NO.: 845-364-3809

LINE NO.	DESCRIPTION	ITEM NUMBER	EST. QTY. YEARLY	UNIT	UNIT PRICE	MANUFACTURER/BRAND NAME	STYLE NUMBER	VENDOR
15-24	SHIRTS-T, MEN'S PERFORMANCE CREW, IMPRINTED 100% polyester, short sleeves, no pocket, Dry Zone, moisture-wicking technology, UPF 50, minimum 3.8 oz. fabric Department logo to be screened in blue, black or white on full back or front chest. Department logo and location supplied at time of order. Special care must be taken throughout the screen printing process due to nature of this fabric. Colors: Navy, Gray Concrete, Neon Yellow Sizes: X-Small, Small, Medium, Large, X-Large Port & Company PC380 or approved equal	20070840021	10	EACH	\$ 8.75	Port & Company NOT RENEWED AS OF 12/06/2023	PC380	Emergency Responder Products

COUNTY OF ROCKLAND
DGS – PURCHASING DEPARTMENT
BLDG. A, 6TH FLOOR, 50 SANATORIUM ROAD
POMONA, NY 10970
TELEPHONE NO.: 845-364-3820
FAX NO.: 845-364-3809

LINE NO.	DESCRIPTION	ITEM NUMBER	EST. QTY. YEARLY	UNIT	UNIT PRICE	MANUFACTURER/BRAND NAME	STYLE NUMBER	VENDOR
15-25	SHIRTS-T, MEN'S PERFORMANCE CREW, IMPRINTED Department logo to be screened in blue, black or white on full back or front chest. Department logo and location supplied at time of order. Special care must be taken throughout the screen printing process due to nature of this fabric. Colors: Navy, Gray Concrete, Neon Yellow Sizes: 2XL, 3XL, 4XL SAME DESCRIPTION AS ITEM # 15-24	20070840022	5	EACH	\$ 15.35	Port & Company NOT RENEWED AS OF 12/06/2023	PC380	Emergency Responder Products

<p align="center"> COUNTY OF ROCKLAND DGS – PURCHASING DEPARTMENT BLDG. A, 6TH FLOOR, 50 SANATORIUM ROAD POMONA, NY 10970 TELEPHONE NO.: 845-364-3820 FAX NO.: 845-364-3809 </p>								
LINE NO.	DESCRIPTION	ITEM NUMBER	EST. QTY. YEARLY	UNIT	UNIT PRICE	MANUFACTURER/BRAND NAME	STYLE NUMBER	VENDOR
15-26	<p>SHIRTS, POLO, PIQUE, GOLF STYLE, EMBROIDERED 100% cotton jersey, short sleeves, clean finished 3 button placket, double needle hem with side vents, Pocket on left chest, rib knit collar and cuff Price to include 'County of Rockland' and/or Department name to be embroidered on left chest above pocket. Single name of employee to be embroidered in white on right chest (average six letters). Embroidery details to be provided at time of order. Colors: Forest Green, Navy Sizes: Small, Medium, Large, X-Large Tri-Mountain 189 or approved equal</p>	20010760016	20	EACH	\$ 19.17	Port Authority	K420P	Feury Image Group Inc

<p align="center"> COUNTY OF ROCKLAND DGS – PURCHASING DEPARTMENT BLDG. A, 6TH FLOOR, 50 SANATORIUM ROAD POMONA, NY 10970 TELEPHONE NO.: 845-364-3820 FAX NO.: 845-364-3809 </p>								
LINE NO.	DESCRIPTION	ITEM NUMBER	EST. QTY. YEARLY	UNIT	UNIT PRICE	MANUFACTURER/BRAND NAME	STYLE NUMBER	VENDOR
15-27	SHIRTS, POLO, PIQUE, GOLF STYLE, EMBROIDERED Price to include 'County of Rockland' and/or Department name to be embroidered on left chest above pocket. Single name of employee to be embroidered in white on right chest (average six letters). Embroidery details to be provided at time of order. Colors: Forest Green, Navy Sizes: 2XL, 3XL, 4XL SAME DESCRIPTION AS ITEM # 15-26	20010760017	6	EACH	\$ 25.44	Port Authority	K420P	Feury Image Group Inc
15-28	JEANS, CARPENTER, BLUE DENIM, RELAXED FIT Heavyweight denim (13.5-14 oz.), 100% cotton, straight leg, sits slightly below the waist, dual tool pockets Rinse: Rinsed indigo blue (dark wash) Size: Waist 29 – 44, Length 28 -34 *Available lengths to be noted on bid if no lengths noted, all lengths must be provided at waist size cost. Dickies LU200RNB, 1993RNB or approved equal. Key Industries not acceptable.	20044370001	150	PAIR	\$ 25.65	Dickies NOT RENEWED AS OF 12/06/2023	LU20	Emergency Responder Products

COUNTY OF ROCKLAND
DGS – PURCHASING DEPARTMENT
BLDG. A, 6TH FLOOR, 50 SANATORIUM ROAD
POMONA, NY 10970
TELEPHONE NO.: 845-364-3820
FAX NO.: 845-364-3809

LINE NO.	DESCRIPTION	ITEM NUMBER	EST. QTY. YEARLY	UNIT	UNIT PRICE	MANUFACTURER/BRAND NAME	STYLE NUMBER	VENDOR
15-29	JEANS, CARPENTER, BLUE DENIM, RELAXED FIT Heavyweight denim (13.5-14 oz.), 100% cotton, straight leg, sits slightly below the waist, dual tool pockets, brass rivets at stress points, no cuffs Rinse: Stonewashed indigo blue (medium wash) Size: Waist 29 – 44, Length 29 -34 *Available lengths to be noted on bid if no lengths noted, all lengths must be provided at waist size cost. LU200SNB, 1993SNB or approved equal. Industries not acceptable.	20044370008	50	PAIR	\$ 25.65	Dickies NOT RENEWED AS OF 12/06/2023	LU20	Emergency Responder Products

COUNTY OF ROCKLAND
DGS – PURCHASING DEPARTMENT
BLDG. A, 6TH FLOOR, 50 SANATORIUM ROAD
POMONA, NY 10970
TELEPHONE NO.: 845-364-3820
FAX NO.: 845-364-3809

LINE NO.	DESCRIPTION	ITEM NUMBER	EST. QTY. YEARLY	UNIT	UNIT PRICE	MANUFACTURER/BRAND NAME	STYLE NUMBER	VENDOR
15-30	JEANS, CARPENTER, BLUE DENIM, RELAXED FIT Heavyweight denim (13.5-14 oz.), 100% cotton, straight leg, sits slightly below the waist, dual tool pockets, brass rivets at stress points, no cuffs Rinse: Stonewashed indigo blue (medium wash) Size: Waist 46,48,50 Length: 30 or 32 *Available lengths to be noted on bid if no lengths noted, all lengths must be provided at waist size cost. Dickies LU200SNB, 1993SNB or approved equal. Key Industries not acceptable.	20044370002	3	PAIR	\$ 25.65	Dickies NOT RENEWED AS OF 12/06/2023	LU20	Emergency Responder Products
15-31	JEANS, WORK, BLUE DENIM REGULAR STRAIGHT FIT 5 pockets includes coin pocket, 100% Heavy duty cotton (13.5-14 oz.), brass rivets at stress points, sits slightly below waist, no cuffs. Wash: Rinsed Indigo Blue Sizes: Waist 28 – 44, Length 29 -* *Available lengths to be noted on bid if no lengths noted, all lengths must be provided at waist size cost. Dickies C9393RNB or approved equal. Key Industries not acceptable.	20044370004	40	PAIR	\$ 24.75	Dickies NOT RENEWED AS OF 12/06/2023	C993	Emergency Responder Products

COUNTY OF ROCKLAND
DGS – PURCHASING DEPARTMENT
BLDG. A, 6TH FLOOR, 50 SANATORIUM ROAD
POMONA, NY 10970
TELEPHONE NO.: 845-364-3820
FAX NO.: 845-364-3809

LINE NO.	DESCRIPTION	ITEM NUMBER	EST. QTY. YEARLY	UNIT	UNIT PRICE	MANUFACTURER/BRAND NAME	STYLE NUMBER	VENDOR
15-32	JEANS, WOMEN'S BLUE DENIM 5 POCKET 100% heavy duty cotton, reinforced at stress points, no cuffs Size: 2-18, Length: REGULAR Wash: Rinsed Indigo Blue Dickies FD9393RNB or approved equal. Key Industries not acceptable.	20044370007	4	PAIR	\$ 32.55	Dickies NOT RENEWED AS OF 12/06/2023	FD93	Emergency Responder Products
15-33	GLOVES- WORK- SAFETY, WINTER THERMAL ANSI CUT LEVEL 2, with black sandy nitrile palms Color: yellow Medium(8), Large (9), X-Large (10), 2XL (11) Bulwark A2-1 or approved equal	20141000001	10	PAIR	\$ 6.99	Portwest NOT RENEWED AS OF 12/06/2023	A146	Emergency Responder Products

COUNTY OF ROCKLAND DGS – PURCHASING DEPARTMENT BLDG. A, 6TH FLOOR, 50 SANATORIUM ROAD POMONA, NY 10970 TELEPHONE NO.: 845-364-3820 FAX NO.: 845-364-3809								
LINE NO.	DESCRIPTION	ITEM NUMBER	EST. QTY. YEARLY	UNIT	UNIT PRICE	MANUFACTURER/BRAND NAME	STYLE NUMBER	VENDOR
CATEGORY: ADD-ON CHARGES								
16-1	One location patches to be sewn for patches provided by County, if not included in bid price.	20137580013	2	EACH	\$ 4.50	ERP NOT RENEWED AS OF 12/06/2023	Patchattach	Emergency Responder Products
16-2	One location patch to be sewn for patches provided by vendor, if not included in bid price.	20137580014	2	EACH	\$ 4.00	ERP NOT RENEWED AS OF 12/06/2023	Patchattach	Emergency Responder Products
16-3	One location screening of name, department or department logo if not included in bid price.	20137580015	2	EACH	\$ 6.00	ERP NOT RENEWED AS OF 12/06/2023	Imprint	Emergency Responder Products
16-4	One location embroidery of employee name or department to be sewn if not included in bid price. Maximum 25 characters.	20137580016	2	EACH	\$ 7.00	ERP NOT RENEWED AS OF 12/06/2023	EMB	Emergency Responder Products
16-5	One location embroidery of department logo (10,000 stitch maximum) to be sewn if not included in bid price.	20137580017	2	EACH	\$ 9.00	ERP NOT RENEWED AS OF 12/06/2023	EMB10	Emergency Responder Products
CATEGORY: ADD-ON CHARGES								
16-1	One location patches to be sewn for patches provided by County, if not included in bid price.	20137580018	2	EACH	\$ 2.63		FIG	Feury Image Group Inc
16-2	One location patch to be sewn for patches provided by vendor, if not included in bid price.	20137580019	2	EACH	\$ 6.30		FIG	Feury Image Group Inc
16-3	One location screening of name, department or department logo if not included in bid price.	20137580020	2	EACH	\$ 4.20		FIG	Feury Image Group Inc

COUNTY OF ROCKLAND DGS – PURCHASING DEPARTMENT BLDG. A, 6TH FLOOR, 50 SANATORIUM ROAD POMONA, NY 10970 TELEPHONE NO.: 845-364-3820 FAX NO.: 845-364-3809								
LINE NO.	DESCRIPTION	ITEM NUMBER	EST. QTY. YEARLY	UNIT	UNIT PRICE	MANUFACTURER/BRAND NAME	STYLE NUMBER	VENDOR
16-4	One location embroidery of employee name or department to be sewn if not included in bid price. Maximum 25 characters.	20137580021	2	EACH	\$ 6.30		FIG	Feury Image Group Inc
16-5	One location embroidery of department logo (10,000 stitch maximum) to be sewn if not included in bid price.	20137580022	2	EACH	\$ 6.30		FIG	Feury Image Group Inc
CATEGORY: ADD-ON CHARGES								
16-1	One location patches to be sewn for patches provided by County, if not included in bid price.	20137000024	2	EACH	\$ 2.00	Wendy	LIB-P	The Liberty Store
16-2	One location patch to be sewn for patches provided by vendor, if not included in bid price.	20137	2	EACH				The Liberty Store
16-3	One location screening of name, department or department logo if not included in bid price.	20137	2	EACH				The Liberty Store
16-4	One location embroidery of employee name or department to be sewn if not included in bid price. Maximum 25 characters.	20137580023	2	EACH	\$ 6.00	EMB	LIB-E	The Liberty Store
16-5	One location embroidery of department logo (10,000 stitch maximum) to be sewn if not included in bid price.	20137	2	EACH				The Liberty Store

<p align="center"> COUNTY OF ROCKLAND DGS – PURCHASING DEPARTMENT BLDG. A, 6TH FLOOR, 50 SANATORIUM ROAD POMONA, NY 10970 TELEPHONE NO.: 845-364-3820 FAX NO.: 845-364-3809 </p>								
LINE NO.	DESCRIPTION	ITEM NUMBER	EST. QTY. YEARLY	UNIT	UNIT PRICE	MANUFACTURER/BRAND NAME	STYLE NUMBER	VENDOR
	CATEGORY: ADD-ON CHARGES							
16-1	One location patches to be sewn for patches provided by County, if not included in bid price.	20137580024	2	EACH	\$ 3.50			NYS Industries for the Disabled
16-2	One location patch to be sewn for patches provided by vendor, if not included in bid price.	20137580025	2	EACH	\$ 7.00			NYS Industries for the Disabled
16-3	One location screening of name, department or department logo if not included in bid price.	20137580026	2	EACH	\$ 3.68			NYS Industries for the Disabled
16-4	One location embroidery of employee name or department to be sewn if not included in bid price. Maximum 25 characters.	20137580027	2	EACH	\$ 5.50			NYS Industries for the Disabled
16-5	One location embroidery of department logo (10,000 stitch maximum) to be sewn if not included in bid price.	20137580028	2	EACH	\$ 6.83			NYS Industries for the Disabled

COUNTY OF ROCKLAND - DGS-PURCHASING
 BLDG. A., 6TH FLOOR, 50 SANATORIUM RD, POMONA, NY 10970
 TELEPHONE: 845-364-3820 / TELEFAX: 845-364-3809

TITLE: Uniforms-Work Clothes, Outerwear and Accessories

RFB #: RFB-RC-2022-073

SPECIFICATIONS

1. SCOPE OF WORK

- 1.1. Supplier who will provide work uniforms and related items describe here in for the County of Rockland. Uniforms shall include but are not limited to golf and polo shirts, t-shirts, sweatshirts, pants, jackets, boots, caps and Kitchen apparel. Offeror must also have the capability to apply patches, embroidery and screen printing as requested. Supplier may be required to provide alterations as deemed necessary by the County. This contract will be used by all County Departments.
- 1.2. Orders will be placed on an as need basis. There will be occasions when small quantities are needed for new employees where sizes may not be stocked.
- 1.3. Quantities listed are estimates. Actual quantities may be more or less.
- 1.4. Contract will be from Date of Award through December 5, 2023 with the options to renew for four (4) additional one year terms
- 1.5. Price adjustment clause is included in this bid

2. MINIMUM QUALIFICATIONS

- 2.1. At a minimum Supplier must meet or exceed the following qualifications:
 - 2.1.1. Have been in business for a minimum of three years for sales, distribution, alterations, screen printing and embroidering of work uniforms and related items as described.
 - 2.1.2. Have provided work uniforms and related items for government and public- sector accounts for a minimum of two years.
 - 2.1.3. Any alterations necessary for a proper fit shall be made promptly and without additional costs to the county or for the employee whom the garment is ordered for. Alterations include but are not limited to inseam lengths
 - 2.1.4. Supplier must have appropriate alteration locations for work uniforms including but not limited to shirts, pants, jackets, caps, patches emblems, embroidery, silk screen-printing and related items. If alteration locations are subcontracted by the Offeror, the Offeror shall be solely responsible for the payment of all work provided by the subcontractor.
 - 2.1.5. Subcontractors must be able to meet the delivery terms and requirements of the contract.
 - 2.1.6. Must be able to provide any special bonding agents required for screen printing at awarded contract prices.
 - 2.1.7. Must have an inventory warehouse that can easily service the needs of the County.
 - 2.1.8. Must provide one point of contact to work closely with the County as an Account Manager who will manage the successful execution of the awarded contract.
 - 2.1.9. An alternate contact in senior management, must be provided in case the Account Manager is not available to respond to the needs of the county within one business day.
 - 2.1.10. Must provide sufficient personnel and equipment to perform and provide prompt work and in the time frame as specified.

COUNTY OF ROCKLAND - DGS-PURCHASING
 BLDG. A., 6TH FLOOR, 50 SANATORIUM RD, POMONA, NY 10970
 TELEPHONE: 845-364-3820 / TELEFAX: 845-364-3809

TITLE: Uniforms-Work Clothes, Outerwear and Accessories

RFB #: RFB-RC-2022-073

3. INVENTORY

- 3.1. Bidder must maintain sufficient inventory to meet the needs of the county.
- 3.2. Bidder agrees that any item purchased under the Agreement and stocked by the County which subsequently becomes surplus, may be returned to Offeror for full credit, provided the material is in saleable condition. The County will pay shipping charges resulting from returned surplus material.

4. REQUIREMENTS

- 4.1. If the supplier intends to submit a product equivalent to a brand name or manufacturer listed in the proposal pages, the supplier must submit detailed specifications or literature, for review. The alternate product size chart must also be provided. Bid item numbers must be added to all documents. If these details are not provided bid may be deemed non-responsive.
- 4.2. All lines in specific groups must be priced or bid may be deemed non-responsive.
- 4.3. All colors listed must be available or bid may be deemed non-responsive.
- 4.4. If additional colors are available, but not listed, supplier must provide the color requested at contract price.
- 4.5. Prices, where specified, are to include sewing of patches, silkscreen printing, or embroidery as specified in the proposal pages.
- 4.6. Silkscreen printing, embroidery or patch application may be requested for items when they are not included in price, at an additional cost as awarded.
- 4.7. Patches will be supplied by the County of Rockland.
- 4.8. If an item or color has been discontinued by a manufacturer, the county Purchasing Department must be notified immediately, even if there is not a pending order. Supplier must not wait to notify the county until a purchase order is received.
- 4.9. The offered replacement of the discontinued contracted style must be sent for evaluation and approval within 5 days.
- 4.10. An approved alternate equivalent must be provided at the awarded contracted price.
- 4.11. The Supplier must receive approval from the County Purchasing Department, in writing, before the alternate can be shipped.
- 4.12. All samples must be sent to the Buyer in the Purchasing Department for approval and contract revision if approved.
- 4.13. The supplier must only ship pre-approved manufacturers and styles of garments.
- 4.14. No unauthorized substitutions will be allowed. Any unauthorized substitutes may be returned to the supplier at the supplier's expense.
- 4.15. All items shipped must be "new" material and free from any defects.
- 4.16. Proofs of all work must be sent for approval prior to completion for all first-time orders.

5. PRICE ADJUSTMENT

- 5.1. The County recognizes this product or service has a price component that may have a commodity with changing costs. The Contractor/Supplier may request a Price Adjustment no more frequently than once

COUNTY OF ROCKLAND - DGS-PURCHASING
 BLDG. A., 6TH FLOOR, 50 SANATORIUM RD, POMONA, NY 10970
 TELEPHONE: 845-364-3820 / TELEFAX: 845-364-3809

TITLE: Uniforms-Work Clothes, Outerwear and Accessories

RFB #: RFB-RC-2022-073

each quarter (3-month period).

A Price Adjustment request must be made in writing and include the reason for the request, documentation supporting the request (ie, commodity increases), the current pricing, and the requested revised pricing.

The County will review the Price Adjustment request. If the Price Adjustment is deemed reasonable the Price Adjustment request will be accepted by written acknowledgement. If the request is not accepted the County may entirely reject the request or may counter with revised pricing. In either case the County will provide a written explanation in support of the decision.

The Director of Purchasing may use available indexes (e.g. CPI or PPI) to determine if the requested Price Adjustment is reasonable. Typically, a Price Adjustment that exceeds 5% will not be approved unless very unusual and significant changes have occurred in the industry.

In the event industry costs decline, the County shall have the right to receive, from the Contractor, a reasonable reduction in prices/pricing that reflect such cost changes in the industry. The County will make a written request to the Contractor for a Price Adjustment in writing with supporting documentation.

6. PRICE LISTS DISCOUNTS (Lines 14-1 through 14-7 only)

- 6.1. A copy of current Manufacturer's Price List of available products and/or nationally offered Vendor Catalog w/ Price list or link to Manufacturer's Price list must be included with the bid response if bidding on these lines. If a Manufacturer's current price list is not provided, the bidder may be deemed non-responsive for that line only.
- 6.2. A link to the Manufacturer's website showing product pictures with details and size charts must also be available.
- 6.3. The ordering department may request a quote for product and quantities needed. All quotes provided must provide List price- Discount- Net Price per item and delivery time after receipt of order
- 6.4. Contractor shall provide requesting authorized users with copies of approved price lists or manufacturer web link that shows List price, upon requests.
- 6.5. The county must be able to verify that price offered meets the percent discount awarded on the contract at time of order.
- 6.6. Once awarded a contract, the percentage discount offered to authorized users, may be increased at the contractor's option, based on individual orders, but in no instance shall the discount be lower than the awarded discount for the duration of the contract.

COUNTY OF ROCKLAND - DGS-PURCHASING
 BLDG. A., 6TH FLOOR, 50 SANATORIUM RD, POMONA, NY 10970
 TELEPHONE: 845-364-3820 / TELEFAX: 845-364-3809

TITLE: Uniforms-Work Clothes, Outerwear and Accessories

RFB #: RFB-RC-2022-073

- 6.7. Upon approval of the contract by the Purchasing Director, contractors may update their product line to include new styles offered by the Manufacturer with new product pricing.
- 6.8. All price list updates must be approved, in writing, by the Purchasing Director before they become effective.
- 6.9. Any Screen printing, Embroidery or Patch application must be available at contract prices. Details will be provided at the time of quote request or purchase order.

7. DELIVERY

- 7.1. Time is of the essence on the delivery of all work uniforms awarded on this contract. Supplier must deliver all items on the Price Schedule, with embroidery, patches, screen printing etc. within **thirty (30) business days** after receipt of order. Emergencies shall be delivered within five business days after receipt of order. Alterations shall be completed and delivered within thirty (30) business days after receipt of request by the County. If there are any delays to this delivery schedule, Account Manager must notify the requesting department, in writing, immediately.
- 7.2. If Supplier fails to meet the delivery time, for any reason, the County may procure the work uniforms from an alternative source. If the County purchases work uniforms from an alternate source, Supplier will be responsible for any costs and charges that exceed the prices the Offeror has submitted in the proposal. If the supplier fails to deliver by the prescribed delivery time, County has the right to cancel without written notice and without liability. Failure to meet this prescribed delivery time on at least five occasions, may result in termination of Agreement.
- 7.3. All order deliveries received by the County, must be accompanied by a delivery ticket or form that must include, but is not limited to the following:
 - 7.3.1. Date of Order
 - 7.3.2. Purchase Order Number
 - 7.3.3. Name of the Department
 - 7.3.4. Name of the Department Contact Person for the Order
 - 7.3.5. Quantity of Items Ordered
 - 7.3.6. Quantity of Items Delivered
 - 7.3.7. Description of the Item as it appears on the Specifications
 - 7.3.8. Description of, if any, Back Ordered Items and Quantities
 - 7.3.9. Date the County can expect Back Ordered Items to be Delivered
- 7.4. Special custom orders must be furnished and delivered within 30 days after receipt of order. The County will not be held responsible for any standard or custom orders that are not delivered within 30 days.
- 7.5. Supplier is permitted to deliver partial orders.
- 7.6. All items delivered must meet or exceed the specifications quality level.
- 7.7. Any items rejected upon review, for deficient quality, will be returned by the County at the supplier's expense for a full credit issued by the Offeror within five business days.
- 7.8. If an alternate product, with and/or without alterations, is shipped without written authorization by the county, the items will be returned to the suppliers at the supplier's expense.

COUNTY OF ROCKLAND - DGS-PURCHASING
 BLDG. A., 6TH FLOOR, 50 SANATORIUM RD, POMONA, NY 10970
 TELEPHONE: 845-364-3820 / TELEFAX: 845-364-3809

TITLE: Uniforms-Work Clothes, Outerwear and Accessories

RFB #: RFB-RC-2022-073

7.9. Return labels must be provided within three days of request for return.

8. ACCOUNT MANAGEMENT

- 8.1. Offeror shall provide a single designated Account Manager to work closely and service the various County departments.
- 8.2. The Account Manager shall be responsible for, but not limited to, addressing ordering issues, complaints, delivery issues and payment issues. In the event the Account Manager is not available, the Offeror shall provide a substitute in senior management, immediately, to maintain conformance with the requirements of this Agreement. The County shall be notified, in writing, immediately if there are any changes in account management.
- 8.3. Account manager will be provided a list of all authorized county department contacts.
- 8.4. Account manager must contact each department upon Award of the contract to discuss each Departments requirements.
- 8.5. Account manager must set-up a file of each department's requirements, including garment, styles, colors, County logos, patches, etc. and anything else that is required to manage the needs of each county department effectively.
- 8.6. Account manager must send department contact 'proofs' of work to be done on all orders prior to production.
- 8.7. If a response is not provided by the county department within 48 hours, the Account manager must notify the purchasing Department at purchasing@co.rockland.ny.us
- 8.8. Account manager must notify the ordering Department immediately, if any shipping delays, for any reason, beyond 30 days, are expected.

9. SUBCONTRACTOR

- 9.1. If the Offeror intends to subcontract a portion of this work, the Offeror shall disclose that intent in the Offeror Questionnaire. The Offeror shall be solely responsible for the payment for all services provided under this Agreement by the Subcontractor.
- 9.2. If the subcontractor is unable to execute the terms of the contract for any reason, it is the supplier's responsibility to provide an alternate subcontractor who can process the orders as specified and in the time frame as required in the contract.
- 9.3. If an alternate subcontractor is not available, and the county has to find an alternate source, the county has the right to charge back the supplier for any additional costs incurred.

10. WORK UNIFORM ADDITIONS

- 10.1. In the event of a change in work uniform specifications and/or requirements, or if an Awarded item is discontinued by the manufacturer, and an equivalent at the contracted price is not available, resulting in the necessity for the addition of a different type or style of uniform garment that does not appear on the Pricing Form, the Purchasing Director, at his discretion, may negotiate a mutually acceptable unit price with the Offeror. This negotiated price shall become part of this Agreement and remain in effect for the duration of this Agreement. The Offeror shall be responsible for submitting on company letterhead, confirmation of the negotiated price. This shall be accomplished by listing the catalog number, manufacturer and the negotiated bid price. If both parties are unable to negotiate a fair and reasonable market price, the County reserves the right to solicit bids from other Offerors.

COUNTY OF ROCKLAND - DGS-PURCHASING
 BLDG. A., 6TH FLOOR, 50 SANATORIUM RD, POMONA, NY 10970
 TELEPHONE: 845-364-3820 / TELEFAX: 845-364-3809

TITLE: Uniforms-Work Clothes, Outerwear and Accessories

RFB #: RFB-RC-2022-073

11. SAMPLES

- 11.1. If samples of an equivalent product are requested, the supplier must furnish the item properly labeled, as listed on the Proposal Pages, with the bid number, item number, description and the supplier's name within five (5) business days of the request. If a sample is not provided, the supplier will be deemed nonresponsive for that item bid.
- 11.2. Samples from the successful supplier, for the purpose of evaluation compliance, will not be returned. Samples from unsuccessful suppliers or other samples requiring return to Offeror must be picked up by the supplier within thirty calendar days of notification by the County. Samples that are not claimed by the supplier after thirty calendar days will become County surplus property and will be disposed of at the convenience of the County.
- 11.3. Samples and detailed specifications literature that are required for the purpose of evaluation and award must be provided at no cost to the County.
- 11.4. A sample of an awarded item may be required, even if bid as specified, at no additional cost to the County. This sample will be kept by the Purchasing Department for reference. Samples must be received within 5 business days of request. The sample must be labeled with the Bid number and line numbers for which the item was awarded.

12. INVOICES

- 12.1. Invoices containing deviations, revisions, omissions or errors will be returned to the account manager for correction and re-submission. Offeror shall not bill or invoice items or prices that deviate at all from the Purchase Order.
- 12.2. All invoices must be emailed to AP_Invoices@co.rockland.ny.us
- 12.3. No orders shall be processed without an authorized purchase order number.

13. CONDITIONS OF MATERIALS AND PACKAGING

- 13.1. All items furnished and provided must be "new" material and free from any defects. This material shall carry all standard warranties prescribed for each fabric. All items shall be prepared and packed for shipment in a manner that will prevent damage in transit. The Offeror shall enclose a packing slip referencing the purchase order number with every shipment. If requested, the Offeror shall package all orders individually in plastic wrap with the County employee's name affixed to the outside.
- 13.2. The Offeror shall provide pricing on manufacturer's brands or equal as outlined in the proposal specifications. Requests for "Approved Equals" will be submitted prior to the bid opening date and time. The County will either approve or deny the Approved Equal request. Only those Approved Equals, formally approved by the County during the bidding process will qualify for award. Bidding unapproved alternate products will deem the Offeror's bid as nonresponsive and the bid will be disqualified from consideration.

14. COUNTY LOGOS, EMBLEMS, PATCHES, EMBROIDERY & SILK SCREENING

- 14.1. The County logo applied to garments shall meet the County's standards for color, size and content. The authorized departmental representative shall approve all departmental logos. The Supplier shall contact each County department, in writing, for specific examples, specifications, design and styles of departmental logos prior to Agreement implementation. The County reserves the right to modify its logo during the Term of the Agreement. Departmental representatives will provide the Supplier with information regarding any changes to logos at the time an order is placed. The Supplier shall be responsible for making the necessary adjustments to its templates to reflect the changes.

COUNTY OF ROCKLAND - DGS-PURCHASING
 BLDG. A., 6TH FLOOR, 50 SANATORIUM RD, POMONA, NY 10970
 TELEPHONE: 845-364-3820 / TELEFAX: 845-364-3809

TITLE: Uniforms-Work Clothes, Outerwear and Accessories

RFB #: RFB-RC-2022-073

- 14.2. Proposals shall include the cost of sewing on of all emblems, patches and flags. The Supplier shall stock a supply for future orders. The County shall procure and supply all emblems, patches, flags currently utilized by the County. The County must approve all emblems, patches, flags prior to their use by the Supplier on County work uniforms.
- 14.3. The uniform worn by County employees may have a sewn-on patch and may also have 2" x 3-1/2" American Flag patch. The Offeror shall include the cost of sewing on all emblems, patches, flags in the bid price where specified. A supply of emblems shall be provided by County Departments for future orders. It is the County Department's responsibility to procure all the emblems, patches, flags and badges. Each County Department shall supply all emblems, patches, flags, and badges with each purchase order.
- 14.4. For silk screening, County departments shall supply camera-ready artwork to the Offeror on disk or portable document format ("PDF"). County departments shall have final approval of any changes to camera-ready artwork. The Offeror shall indicate costs for providing silk screening and embroidery shall be in unit prices as specified.
- 14.5. It is the contractor's responsibility to determine if any fabrics awarded require any special bonding agent for screen printing.

15. AWARD

- 15.1. It is the intent of the County of Rockland to award this total bid to one vendor. Bid will be awarded to the overall lowest responsive, responsible vendor that meets the stated requirements. **The County of Rockland reserves the right to award this bid on a line-by-line basis, by Category, or by Groups (as indicated below) to the lowest responsive responsible bidder(s) that meet the stated requirements.**
- 15.2. **All items awarded on this contract will be from date of Award through December 5, 2023 with the options to renew for four (4) additional one-year terms. See Price Adjustment Clause.**
- 15.3. **Awards for Line items 15-1 through 15-33 will be awarded effective as of December 6, 2022 for the duration of the contract term as specified.**
- 15.3.1. **The following will be awarded by Group. To be considered for an Award by Group, bidder must bid all items.**

THE FOLLOWING LINES MAY BE AWARDED BY GROUP
2-4 through 2-5
2-6 through 2-7
2-8 through 2-9
2-10 through 2-15
3-1 through 3-2
4-1 through 4-5
4-6 through 4-10
4-11 through 4-14
4-15 through 4-16
5-1 through 5-3
5-4 through 5-5
5-6 through 5-9

COUNTY OF ROCKLAND - DGS-PURCHASING
BLDG. A., 6TH FLOOR, 50 SANATORIUM RD, POMONA, NY 10970
TELEPHONE: 845-364-3820 / TELEFAX: 845-364-3809

TITLE: Uniforms-Work Clothes, Outerwear and Accessories

RFB #: RFB-RC-2022-073

6-1 through 6-4
8-1 through 8-6
8-7 through 8-8
9-1 through 9-4
9-5 through 9-8
9-9 through 9-15
10-1 through 10-8
10-9 through 10-23
11-1 through 11-16
11-17 through 11-18
11-19 through 11-20
12-1 through 12-13
13-1 through 13-8
13-9 through 13-12
15-1 through 15-2
15-3 through 15-4
15-5 through 15-6
15-9 through 15-10
15-11 through 15-12
15-13 through 15-14
15-15 through 15-16
15-20 through 15-21
15-23 through 15-25
15-26 through 15-27
15-28 through 15-32

DEPARTMENT OF GENERAL SERVICES, PURCHASING DIVISION

Dr. Robert L. Yeager Health Center
50 Sanatorium Rd, Building A
Pomona, New York 10970
Phone: (845) 364-3820 Fax: (845) 364-3809
Email: purchasing@co.rockland.ny.us

Paul Brennan, FNIGP, NIGP-CPP, CPPO
Director of Purchasing

ADDENDUM # 2

RFB-RC-2022-073

Uniforms- Work Clothes, Outerwear and Accessories

The information in this addendum supersedes any contradictory information set forth in the contract documents. Acknowledge receipt of this addendum in the space provided on the signature page of the bid proposal. Failure to do so, may subject the bidder to disqualification. This addendum forms a part of the contract documents.

The County of Rockland is extending the closing date for RFB-RC-2022-073. If you already submitted a bid, and don't want to make any changes, no further action is required. If you want to resubmit a bid, you must un-submit your previous bid first.

Current Closing Date: Thursday, September 1, 2022 at 3:00pm
NEW Closing Date: Tuesday, September 13, 2022 at 3:00pm

Delete 2:1.1

Replace with the following:

Have been in business for a minimum of two years for sales, distribution, alterations, screen printing and embroidering of work uniforms and related items as described

ELECTRONIC BID SUBMISSION ENCOURAGED

Proposals may be submitted electronically through the County's BONFIRE BID Submission Portal. Please refer to the instructions titled: **Electronic Bid Submission Instructions for Supplier**

SIGNED:

Paul J. Brennan

PAUL J. BRENNAN, FNIGP, NIGP-CPP, CPPO
DIRECTOR OF PURCHASING

ADDENDUM
9/1/22

DEPARTMENT OF GENERAL SERVICES, PURCHASING DIVISION

Dr. Robert L. Yeager Health Center
50 Sanatorium Rd, Building A
Pomona, New York 10970
Phone: (845) 364-3820 Fax: (845) 364-3809
Email: purchasing@co.rockland.ny.us

Paul Brennan, FNIGP, NIGP-CPP, CPPO
Director of Purchasing

ADDENDUM # 1

RFB -RC-2022-073

Uniform- Work Clothes, Outerwear and Accessories

The information in this addendum supersedes any contradictory information set forth in the contract documents. Acknowledge receipt of this addendum in the space provided on the signature page of the bid proposal. Failure to do so, may subject the bidder to disqualification. This addendum forms a part of the contract documents.

Question # 1:

Can you supply an example for contract RFB-RC-2022-073 what the logo or art will be so we can estimate stitch count?

Answer #1:

The maximum stitch count for Logo embroidery is 10,000 stitches.
Attached are only some examples of County Logos for embroidery.
There are more Departments than what is shown.
The Rockland County Highway Department Logo is predominantly used for screen print only.

Question #2:

Can you give me more details like what type of print, shirts brand and model, and typical quantity?

Answer #2:

Print, shirts brand and model number are as specified in the bid table. Quantities listed are estimated and may be more or less than the quantities listed. Orders will be placed as needed. There are no minimum restrictions per order. All submitted prices must be FOB destination.

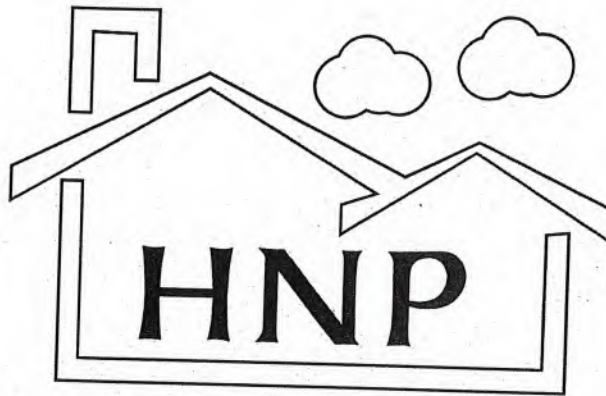
SIGNED:

Paul J. Brennan

PAUL J. BRENNAN, FNIGP, NIGP-CPP, CPPO
DIRECTOR OF PURCHASING



Same Logo for "Parks Department"
Screenprint



Healthy Neighbors Program

Logo Size: 3.6"w x 3"h

COUNTY OF ROCKLAND DEPARTMENT OF HEALTH

Logo Size: 3.6"w x .82"h



note: Department name will vary

SPORT-TEK®

**Sport-Tek® Flexfit® Performance Solid Cap.
STC17**

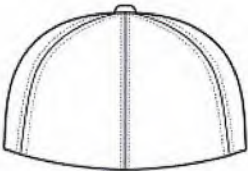


A lightweight moisture-wicking cap that's extremely comfortable thanks to Flexfit technology.

- Fabric 83/14/3 nylon/cotton twill/spandex
- Structure Structured
- Profile Mid



front



back

HOW TO MEASURE

HATS

Measure the circumference around the head, above the eyebrow and at the widest part of the head. Divide number by 3.14 for hat size.

SIZE CHART

	XS	S/M	L/XL
Hats	6 5/8 - 7 1/8	6 3/4 - 7 1/4	7 1/8 - 7 5/8
Head Size	20 3/4- 22 3/8	21 1/4- 22 3/4	22 3/8- 23 7/8

COLOR INFORMATION



Black
PMS NTR BLACK
C



Forest Green
PMS 553C



Maroon
PMS 504C



True Navy
PMS 533C



True Red
PMS 200C



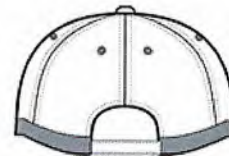
True Royal
PMS 7687C



White
PMS White

CornerStone**CornerStone[®] ANSI 107 Safety Cap. CS802**

Fabric: 55/45 poly/polypropylene Structure: Lightly structured
Profile: Low Features: ANSI/ISEA 107-certified accessory 1-
inch reflective band around crown Closure: Micro hook and
loop



front



back

HOW TO MEASURE**HATS**

Measure the circumference around the head, above the eyebrow and at the
widest part of the head. Divide number by 3.14 for hat size.

SIZE CHART

	OSFA
Hat Size	6 5/8- 8
Head Size	20 7/8- 25 1/8

COLOR INFORMATION

Safety Orange
PMS NO MATCH



Safety Yellow
PMS NO MATCH

GILDAN®**Gildan Softstyle® Ladies Fit V-Neck T-Shirt.
64V00L**

- 4.5-ounce, 100% ring spun cotton
- 90/10 cotton/poly (Sport Grey)
- fitted silhouette with side seam
- Mitered ½" rib knit v-neck collar
- Taped neck and shoulders
- Tearaway label
- Double-needle sleeves and hem

CARE INSTRUCTIONS

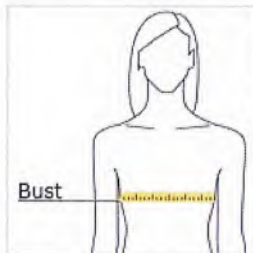
Machine wash warm, inside out, with like colors. Only non-chlorine bleach. Tumble dry medium. Do not iron if decorated. Do not dry clean.



front



back

HOW TO MEASURE**BUST**

Measure under the arm and around the fullest part of the bust with arms down, keeping tape horizontal.

SIZE CHART

	S	M	L	XL	2XL	3XL
Bust	0/2	6/8	10/12	14/16	16/18	18/20

COLOR INFORMATION

Azalea
PMS 2045C



Black
PMS 426C



Cherry Red
PMS 187C



Navy
PMS 533C



Sport Grey
PMS COOL GRAY
7C



White

*Not all sizes are available in every color.

GILDAN®**Gildan® Ladies Heavy Cotton™ 100% Cotton T-Shirt. 5000L**

- 5.3-ounce, 100% cotton
- Non-topstitched, classic width, rib collar
- 50/50 cotton/poly (Graphite Heather)
- Taped neck and shoulders
- Tearaway label
- Side seamed with tapered fit
- Cap sleeves

CARE INSTRUCTIONS

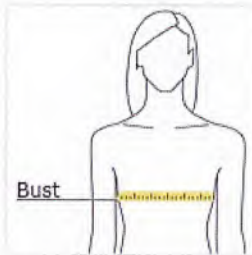
Machine wash warm, inside out with like colors, only non-chlorine bleach when needed, do not use fabric softener.
Tumble dry low. Cool iron if needed, exclusive of decoration, do not dry clean.



front



back














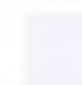
HOW TO MEASURE**BUST**

Measure under the arm and around the fullest part of the bust with arms down, keeping tape horizontal.

SIZE CHART

	S	M	L	XL	2XL	3XL
Size	4/6	8/10	12/14	16/18	18/20	20/22

COLOR INFORMATION

										
Azalea PMS 2045C	Black PMS 426C	Carolina Blue PMS 659C	Charcoal PMS COOL GRAY 10C	Coral Silk PMS 184 C	Graphite Heather PMS 424 C	Heliconia PMS 213C	Maroon PMS 7644C	Navy PMS 533C	Orange PMS 2026C	Purple PMS 2112C
										
Red PMS 199C	Royal PMS 7686C	Sapphire PMS 641C	Sport Grey PMS COOL GRAY 7C	White						

*Not all sizes are available in every color.

GILDAN®**Gildan® Ladies Heavy Cotton™ 100% Cotton
Long Sleeve T-Shirt. 5400L**

- 5.3-ounce, 100% cotton
- 90/10 cotton/poly (Sport Grey)
- Non-topstitched, classic width, rib collar
- Tearaway label
- Semi-fitted side-seamed body

CARE INSTRUCTIONS

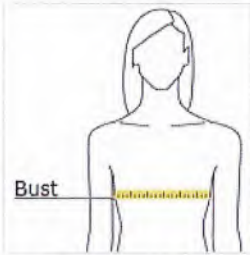
Machine wash warm, inside out, with like colors. Only non-chlorine bleach. Tumble dry medium. Do not iron if decorated.
Do not dry clean.



front



back

HOW TO MEASURE**BUST**

Measure under the arm and around the fullest part of the bust
with arms down, keeping tape horizontal.

SIZE CHART

	S	M	L	XL	2XL	3XL
Size	4/6	8/10	12/14	16/18	20/22	24/26

COLOR INFORMATION

Black
PMS 426C



Heliconia
PMS 213C



Navy
PMS 533C



Red
PMS 199C



Royal
PMS 7686C



Sport Grey
PMS COOL GRAY
7C



White

*Not all sizes are available in every color.

PRODUCT DETAILS


78192 prime

Core 365 Ladies' Pinnacle Performance Long-Sleeve Piqué Polo

Features

- matching flat-knit collar

Fabric

- 100% polyester pique, 4.1 oz./yd2/140 gsm
- Moisture wicking, antimicrobial and UV protection performance

Sizes

- XS - 3XL

Product Specifications

	XS	S	M	L	XL	2XL	3XL
BODY WIDTH	17.5	18.5	19.5	21	22.5	24	25.5
FULL BODY LENGTH	23.75	24.5	25.25	26	26.75	27.5	27.5
SLEEVE LENGTH	31	31.5	32.5	33.5	34.5	35.13	35.75

Size Chart

	XS	S	M	L	XL	2XL	3XL
CHEST	31-32	33-35	36-38	39-42	43-45	46-49	50-53



BACK VIEW



SIDE VIEW



10 Available Colors

Black	Burgundy	Campus Gold	Campus Purple	Carbon	Classic Navy	Classic Red	Forest	True Royal	White
PMS 6905c	PMS 504c	PMS 123c	PMS 2617c	PMS 7540c	PMS 533c	PMS 201c	PMS 5535c	PMS 661c	PMS white

													
Acid Green	Black	Burgundy	Campus Gold	Campus Orange	Campus Purple	Carbon	Charity Pink	Classic Navy	Classic Red	Electric Blue	Forest	Platinum	Safety Yellow
PMS 377c	PMS black c	PMS 504c	PMS 123c	PMS 1665c	PMS 2617c	PMS 7540c	PMS 674c	PMS 533c	PMS 201c	PMS 2193c	PMS 5535c	PMS 428c	PMS 809c
													
True Royal	White												
PMS 661c	PMS white												

JERZEES®

SPOT SHIELD™

437WR

Spotshield™ Ladies' Jersey Sport Shirt

**GENDER**

Ladies'

FABRIC

50/50 Cotton/Polyester Pre-shrunk Jersey with stain-resistant finish

WEIGHT

5.4 oz / 183 g

DESCRIPTION

- SpotShield™ fabric repels water and most oil-based spills
- Made with sustainably sourced USA grown cotton
- Tear-away label
- Side-seamed, classic ladies' fit
- Welt knit collar that resists curling
- 1x1 rib sleeve bands
- Elongated four-button placket with bottom box-stitch reinforcement
- Pearlized buttons with durable cross-stitching
- Clean-finished side vents
- Two-needle hemmed bottom
- Companion to style 437MSR
- Imported

FABRIC VARIATIONS

- Oxford - 47% Cotton / 53% Polyester

	OXFORD		MAROON
	J. NAVY		BLACK
	DEEP PURPLE		ROYAL
	CALIFORNIA BLUE		LIGHT BLUE
	WHITE		CYBER PINK
	TRUE RED		FOREST GREEN

PRODUCT FEATURES

Dimensions	S	M	L	XL	2XL
Width	18.25	19.5	21	23	25
Length	26	27	28	29	30
Center Back Sleeve Length	15.625	16.125	16.75	17.5	18.25

Case Quantity	S	M	L	XL	2XL
Units	36	36	36	36	36

PORT AUTHORITY

Port Authority® Ladies Long Sleeve Carefree Poplin Shirt. LW100

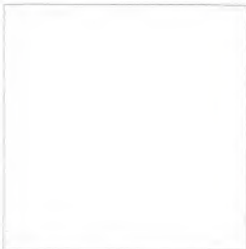


Lightweight and breathable, our cotton-rich shirts keep their professional edge thanks to a stain-release finish, which releases stains during washing. Budget-friendly and durable, these virtually carefree shirts feature an Easy Care blend and finish. They also color-coordinate with our Core Classic Pique Polos for seamless uniforming.

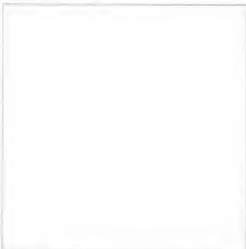
- 3.3-ounce, 55/45 cotton/poly
- Dyed-to-match buttons
- Open collar
- Bust darts
- Button-through sleeve plackets
- Adjustable cuffs

CARE INSTRUCTIONS

Machine wash cold with like colors. Only non-chlorine bleach if needed. Tumble dry low. Warm iron if needed

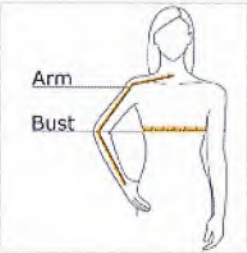


front



back

HOW TO MEASURE



BUST
With arms down at sides, measure around the upper body, under arms and around the fullest part of the bust.

ARM
Place hand on hip. Start at the center of the back of the neck and measure across the shoulder, to the elbow, and then down to the wrist.

SIZE CHART

	XS	S	M	L	XL	XXL	3XL	4XL
Size	2	4/6	8/10	12/14	16/18	20/22	24/26	28/30
Bust	32-34	35-36	37-38	39-41	42-44	45-47	48-51	52-55
Arm	30-30 3/4	30 3/4-31 1/2	31 1/2-32	32-32 1/2	32 1/2-33	33-33 3/8	33 3/8-33 3/4	33 3/4-34 1/2

COLOR INFORMATION



Burgundy
PMS 7428 C



Carolina Blue
PMS 646 C



Coastal Blue
PMS 7690 C



Deep Black
PMS NTR BLACK
6 C



Graphite
PMS 7540 C



Gusty Grey
PMS COOL GREY
8 C



Pink Azalea
PMS 234 C



Rich Red
PMS 207 C



River Blue Navy
PMS 533 C



True Royal
PMS 7687 C



Wheat
PMS NO MATCH

White
PMS WHITE

STYLE# 3430

COACH'S JACKET



Write a review



1. Choose Product Color

Color: NAVY



**Prices apply to core sizes and are subject to change.
Please inquire for pricing on larger sizes.**

DESCRIPTION ^

Ready; set; snap - no coach should be without this jacket. Repels light rain and let's the team know who's in charge. Easy to embroider.

- 100% Polyester; 2.08 oz
- Polyester shell with brushed tricot lining repels light rain
- Open side pockets with elastic cuff
- Open hem with adjustable drawstring
- Home laundry
- Unisex sizes: XS - 6XL

SPECIFICATION ^

Style Name	COACH'S JACKET
Fabric	100% POLYESTER
Color	NAVY
Gender	Unisex
Pantone Color	19-4010 TCX Total Eclipse
Sleeve Type	Long Sleeve

REVIEWS

PRODUCT DETAILS

DEVON & JONES®

D700 prime

Devon & Jones Men's Three-Season Classic Jacket

Features

- Sturdy Black enamel front-zipper
- InconspicuZip™ for clean embroidery
- Raglan sleeves
- Outside zip pockets, inside zip security pocket
- YKK zippers
- Banded-bottom

Fabric

- 100% tason nylon shell w/microfleece lining & lightweight polyfill insulation
- Nylon-lined sleeves

Sizes

- S - 6XL

Product Specifications

	S	M	L	XL	2XL	3XL	4XL	5XL	6XL
BODY LENGTH	28	28.5	29	29.5	30	30.5	31	31.5	32
BODY WIDTH	25	26 1/2	28	29.5	31	32.5	34	35.5	37
FULL BODY LENGTH	27.5	28	28.5	29	29.5	30	30.5	-	-
SLEEVE LENGTH	34.5	35.75	37	38.25	39.5	40.75	42	43	44

Size Chart

	S	M	L	XL	2XL	3XL	4XL	5XL	6XL
CHEST	35-38	39-41	42-45	46-49	50-52	53-56	57-60	61-64	65-68



BACK VIEW



SIDE VIEW



8 Available Colors



Black

PMS
procblackc

Crimson

PMS
202c

Forest

PMS
7736c

Graphite

PMS
coolgry10c

Navy

PMS
532c

Red

PMS
187c

Stone

PMS
2310c

True Royal

PMS
654c

PORT AUTHORITY.

Port Authority® Essential Rain Jacket J407

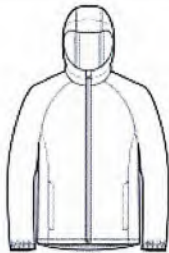


A year-round must-have, this fully seam-sealed 8K/5K waterproof, breathable 2.5-layer jacket has a DWR finish. It packs easily and gives great weather-fighting performance.

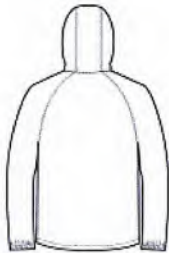
- 100% polyester shell bonded to a waterproof laminate film with DWR finish
- 8,000MM fabric waterproof rating
- 5,000G/M2 fabric breathability rating
- Interior grid print
- Waterproof center front zipper
- Interior storm flap with chin guard
- Front zippered pockets
- Elastic cuffs

CARE INSTRUCTIONS

Machine wash cold with like colors. Only non-chlorine bleach when needed. Tumble dry low. Cool iron if necessary. Do not Dry Clean.

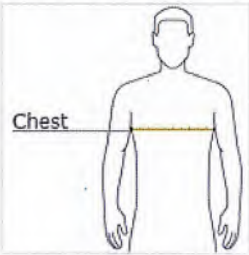


front



back

HOW TO MEASURE



CHEST
With arms down at sides, measure around the upper body, under arms and over the fullest part of the chest.

SIZE CHART

	XS	S	M	L	XL	2XL	3XL	4XL
Chest	32-34	35-37	38-40	41-43	44-46	47-49	50-53	54-57

COLOR INFORMATION



Deep Black
PMS NTR BLACK
C



Deep Red
PMS 207C



Graphite Grey
PMS 432C



True Navy
PMS 533C



True Royal
PMS 7687C

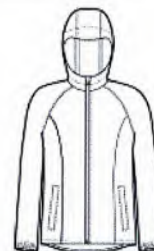
PORT AUTHORITY.**Port Authority® Ladies Essential Rain Jacket
L407**

A year-round must-have, this fully seam-sealed 8K/5K waterproof, breathable 2.5-layer jacket has a DWR finish. It packs easily and gives great weather-fighting performance.

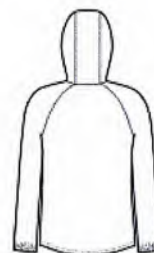
- 100% polyester shell bonded to a waterproof laminate film with DWR finish
- 8,000MM fabric waterproof rating
- 5,000G/M2 fabric breathability rating
- Interior grid print
- Waterproof center front zipper
- Interior storm flap with chin guard
- Front zippered pockets
- Elastic cuffs

CARE INSTRUCTIONS

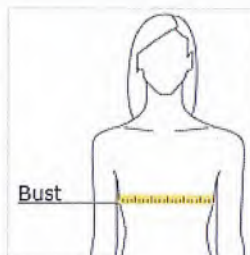
Machine wash cold with like colors. Only non-chlorine bleach when needed. Tumble dry low. Cool iron if necessary. Do not Dry Clean.



front



back

HOW TO MEASURE**BUST**

Measure under the arm and around the fullest part of the bust with arms down, keeping tape horizontal.

SIZE CHART

	XS	S	M	L	XL	XXL	3XL	4XL
Size	2	4/6	8/10	12/14	16/18	20/22	24/26	28/30
Bust	32-34	35-36	37-38	39-41	42-44	45-47	48-51	52-55

COLOR INFORMATION

Deep Black
PMS NTR BLACK
C



Graphite



Light Cyan Blue
PMS 638C



True Navy
PMS 533C



True Royal
PMS 7687C

STYLE# 1230

EASY CARE POPLIN

★★★★★ Write a review



1. Choose Product Color

Color: DENIM BLUE



**Prices apply to core sizes and are subject to change.
Please inquire for pricing on larger sizes.**

DESCRIPTION ^

This men's easy care poplin short sleeve shirt is soft; colorful and hardworking. This performance poplin stands up to demanding wear. Perfect for restaurants; delivery services or any image apparel where performance counts. Embroiders well.

- 65% Polyester/35% Cotton; 4.0/4.25 oz. wt.
- Short sleeve with button down collar
- Wood tone buttons and left chest pocket
- Fabric wicks moisture
- Soil release and wrinkle resistant
- Industrial launder or machine washable
- Men's Sizes: Regular; S - 3XL; Talls; L - 6XL
- Ladies' companion is 5230

SPECIFICATION ^

Style Name	EASY CARE POPLIN
Fabric	65% POLYESTER / 35% COTTON
Color	DENIM BLUE
Gender	Men's
Pantone Color	PMS 2137C

STYLE# 1280

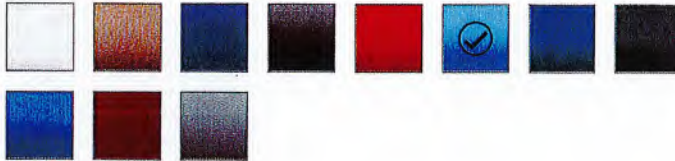
EASY CARE POPLIN

★★★★★ Write a review



1. Choose Product Color

Color: DENIM BLUE



**Prices apply to core sizes and are subject to change.
Please inquire for pricing on larger sizes.**

DESCRIPTION ^

This men's easy care poplin long sleeve shirt is soft; colorful and hardworking. This performance poplin stands up to demanding wear. Perfect for restaurants; delivery services or any image apparel where performance counts. Embroiders well.

- 65% Polyester/35% Cotton; 4.0/4.25 oz. wt.
- Long sleeve with button-down collar
- Wood tone buttons and left chest pocket
- Fabric wicks moisture
- Soil release and wrinkle resistant
- Industrial launder or machine washable
- Men's Sizes: Regular, S - 3XL; Talls, L - 6XL
- Ladies' companion is 5280

SPECIFICATION ^

Style Name	EASY CARE POPLIN
Fabric	65% POLYESTER / 35% COTTON
Color	DENIM BLUE
Gender	Men's
Pantone Color	PMS 2137C

PORT AUTHORITY.**Port Authority® Long Sleeve Carefree Poplin Shirt. W100**

Lightweight and breathable, our cotton-rich shirts keep their professional edge thanks to a stain-release finish, which releases stains during washing. Budget-friendly and durable, these virtually carefree shirts feature an Easy Care blend and finish. They also color-coordinate with our Core Classic Pique Polos for seamless uniforming.

- 3.3-ounce, 55/45 cotton/poly
- Dyed-to-match buttons
- Button-down collar
- Back box pleat
- Left chest pocket
- Rounded adjustable cuffs

CARE INSTRUCTIONS

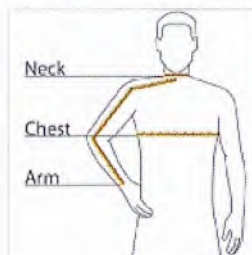
Machine wash cold with like colors. Only non-chlorine bleach if needed. Tumble dry low. Warm iron if needed.



front



back

HOW TO MEASURE**CHEST WIDTH**

Measure under the arm and around the fullest part of the chest with arms down, keeping tape horizontal.

NECK

Measure around the fullest part of the neck at the base.

ARM

Place hand on hip. Start at the center of the back of the neck and measure across the shoulder, to the elbow, and then down to the wrist.

SIZE CHART

	XS	S	M	L	XL	2XL	3XL	4XL
Chest	32-34	35-37	38-40	41-43	44-46	47-49	50-53	54-57
Neck	14 1/2-15	15-15 1/2	15 1/2-16	16-16 1/2	16 1/2-17	17-17 1/2	17 1/2-18	18-18 1/2
Arm	30 1/2	32	34	35	36 1/2	37 1/2	38 1/2	39 1/2

COLOR INFORMATIONBurgundy
PMS 7428CCarolina Blue
PMS 2142CCoastal Blue
PMS 2384CDeep Black
PMS NTR BLACK
CDeep Forest
Green
PMS 5605C

Dusty Blue

Graphite
PMS 7540CGusty Grey
PMS COOL GRAY
PMS 207C
8CRich Red
PMS 207CRiver Blue Navy
PMS 533CTrue Royal
PMS 7687C

Wheat



White

GILDAN®**Heavy Blend™ Crewneck Sweatshirt. 18000**

- 8-ounce, 50/50 cotton/poly
- Double-needle stitching at waistband and cuffs
- 1x1 rib knit collar, cuffs and waistband with spandex

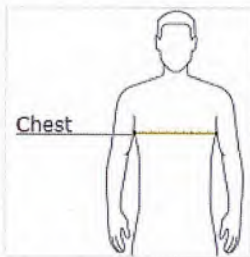
Due to the nature of 50/50 cotton/poly neon fabrics, special care must be taken throughout the printing process.



front



back

HOW TO MEASURE**CHEST WIDTH**

Measure under the arm and around the fullest part of the chest with arms down, keeping tape horizontal.

SIZE CHART

	5XL	5XL	S	S	M	M	L	L	XL	XL	2XL	3XL	3XL	4XL	4XL
Chest	62-64	62-64	34-36	34-36	38-40	38-40	42-44	42-44	46-48	46-48	50-52	54-56	54-56	58-60	58-60

COLOR INFORMATION

Antique Cherry PMS 7427C	RedAntique Sapphire PMS 7706C	Ash PMS COOL GRAY 3C	Black PMS 426C	Cardinal Red PMS 1955C	Carolina Blue PMS 659C	Charcoal PMS COOL GRAY 10C	Cherry Red PMS 187C	Dark Chocolate PMS 412C	Dark Heather PMS 7545C	Forest Green PMS 5535C
Gold PMS 1235C	Graphite Heather	Heliconia PMS 213C	Indigo Blue PMS 5405C	Irish Green PMS 2252C	Light Blue PMS 543C	Light Pink PMS 684C	Maroon PMS 7644C	Military Green PMS 5615C	Navy PMS 533C	Orange PMS 2026C
Purple PMS 2112C	Red PMS 199C	Royal PMS 7686C	S. Orange	Safety Green PMS 382C	Safety Pink PMS 1915C	Sand PMS 7528C	Sport Grey PMS COOL GRAY 7C	White		

PRODUCT DETAILS


SZ101 primeplus

Berne Men's Berne Heritage Thermal Lined Sweatshirt

Features

- Two-needle stitched main seams
- Nylon front zipper
- Double layered three-piece hood
- Oversized front pockets
- Knit cuffs and waistband
- Reinforced bartacks at stress points

Fabric

- 9 oz., 60% cotton/40% polyester fleece
- 5 oz., thermal lining

Sizes

- S - 4XL

Product Specifications

	S	M	L	XL	2XL	3XL	4XL
BODY LENGTH	28	29	30	31	32	33	34
BODY WIDTH	20.5	22.5	24.5	26.5	28.5	30.5	32.5
SLEEVE LENGTH	36	36.75	37.5	38.25	39	39.75	40.5



BACK VIEW



SIDE VIEW



3 Available Colors



Black



Charcoal



Navy

PRODUCT DETAILS

**SZ101T****Berne Men's Tall Heritage Thermal-Lined Full-Zip Hooded Sweatshirt****Features**

- Two-needle stitched main seams
- Nylon front zipper
- Double layered three-piece hood
- Oversized front pockets
- Knit cuffs and waistband
- Reinforced bartacks at stress points

Fabric

- 9 oz., 60% cotton/40% polyester fleece
- 5 oz., thermal lining

Sizes

- MT - 6XT

Product Specifications

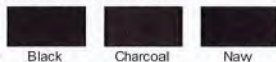
	MT	LT	XLT	2XT	3XT	4XT	5XT	6XT
BODY LENGTH	31.0	32.0	33.0	34.0	35.0	36.0	37.0	38.0
BODY WIDTH	24.5	26.5	28.5	30.5	32.5	34.5	36.5	38.5
NECK CIRCUMFERENCE	23.0	24.0	25.0	26.0	28.0	30.0	30.0	30.0
SLEEVE LENGTH	38.8	39.5	40.3	41.0	41.8	42.5	43.3	44.0



BACK VIEW



SIDE VIEW

**3 Available Colors**

Black

Charcoal

Navy

GILDAN®

Heavy Blend™ Full-Zip Hooded Sweatshirt.
18600



- 8-ounce, US 50/50 cotton/poly
- Double-needle stitching at waistband and cuffs
- Unlined hood with dyed-to-match drawcord
- YKK metal zipper
- 1x1 rib knit cuffs and waistband with spandex
- Front pouch pockets

Due to the nature of 50/50 cotton/poly neon fabrics, special care must be taken throughout the printing process.

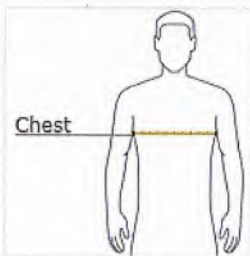


front



back

HOW TO MEASURE



CHEST WIDTH

Measure under the arm and around the fullest part of the chest with arms down, keeping tape horizontal.

SIZE CHART

	S	S	M	M	L	L	XL	XL	2XL	3XL	3XL	4XL	5XL
Chest	34-36	34-36	38-40	38-40	42-44	42-44	46-48	46-48	50-52	54-56	54-56	58-60	62-64

COLOR INFORMATION

										
Ash Grey PMS COOL GRAY 3C	Black PMS 426C	Cardinal PMS 1955C	Carolina Blue PMS 659C	Dark Chocolate PMS 412C	Dark Heather Grey PMS 446C	Forest Green PMS 5535C	Graphite Heather	Irish Green PMS 2252C	Light Pink PMS 684C	Maroon PMS 7644C
										
Navy PMS 533C	Purple PMS 2112C	Red PMS 199C	Royal PMS 7686C	S. Orange	Safety Green PMS 382C	Sport Grey	White			

*Not all sizes are available in every color.

GILDAN®**Heavy Blend™ Hooded Sweatshirt. 18500**

- 8-ounce, 50/50 cotton/poly
- Double-needle stitching at waistband and cuffs
- Double-lined hood with dyed-to-match drawcord
- 1x1 rib knit cuffs and waistband with spandex
- Front pouch pocket

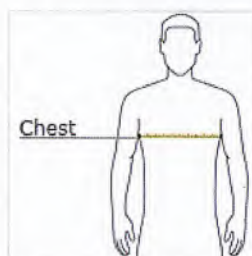
Due to the nature of 50/50 cotton/poly neon fabrics, special care must be taken throughout the printing process.



front



back

HOW TO MEASURE**CHEST WIDTH**

Measure under the arm and around the fullest part of the chest with arms down, keeping tape horizontal.

SIZE CHART

	S	S	M	M	L	L	XL	XL	2XL	3XL	3XL	4XL	4XL	5XL	5XL
Chest	34-36	34-36	38-40	38-40	42-44	42-44	46-48	46-48	50-52	54-56	54-56	58-60	58-60	62-64	62-64

COLOR INFORMATION

Antique Cherry Red PMS 7427C	Antique Sapphire PMS 7706C	Ash PMS COOL GRAY 3C	Black PMS 426C	Cardinal Red PMS 1955C	Carolina Blue PMS 659C	Charcoal PMS COOL GRAY 10C	Cherry Red PMS 187C	Dark Chocolate PMS 412C	Dark Heather PMS 7545C	Forest Green PMS 5535C
Garnet PMS 188C	Gold PMS 1235C	Graphite Heather	Heather Sport Dark	Heather Sport Navy	Heliconia PMS 213C	Indigo Blue PMS 5405C	Irish Green PMS 2252C	Light Blue PMS 543C	Light Pink PMS 684C	Maroon PMS 7644C
Military Green PMS 5615C	Navy PMS 533C	Orange PMS 2026C	Purple PMS 2112C	Red PMS 199C	Royal PMS 7686C	S. Orange	Safety Green PMS 382C	Safety Pink PMS 1915C	Sand PMS 7528C	Sport Gray PMS COOL GRAY 7C
White										

*Not all sizes are available in every color.

PRODUCT DETAILS


88192 primeplus

Core 365 Men's Pinnacle Performance Long-Sleeve Piqué Polo

Features

- matching flat-knit collar
- spandex enhanced rib knit cuffs

Fabric

- 100% polyester pique, 4.1 oz./yd2/140 gsm
- Moisture wicking, antimicrobial and UV protection performance

Sizes

- S - 5XL

Product Specifications

	S	M	L	XL	2XL	3XL	4XL	5XL
BODY WIDTH	20.5	22	23.5	25	26.5	28	29.5	31
FULL BODY LENGTH	28	29.25	30	30.75	31.5	32.25	32.25	32.25
SLEEVE LENGTH	34	35	36	37	37.75	38.5	39	39.5

Size Chart

	S	M	L	XL	2XL	3XL	4XL	5XL
CHEST	35-38	39-41	42-45	46-49	50-52	53-56	57-60	61-64



BACK VIEW



SIDE VIEW



10 Available Colors

Black	Burgundy	Campus Gold	Campus Purple	Carbon	Classic Navy	Classic Red	Forest	True Royal	White
PMS procblackc	PMS 504c	PMS 123c	PMS 2617c	PMS 7540c	PMS 533c	PMS 201c	PMS 5535c	PMS 661c	PMS white

PRODUCT DETAILS



88192T

**Core 365 Men's Tall Pinnacle Performance
Long-Sleeve Piqué Polo**

Features

- matching flat-knit collar
- spandex enhanced rib knit cuffs

Fabric

- 100% polyester pique, 4.1 oz./yd²/140 gsm
- Moisture wicking, antimicrobial and UV protection performance

Sizes

- LT - 5XT

Product Specifications

	LT	XLT	2XT	3XT	4XT	5XT
BODY WIDTH	23.5	25	26.5	28	29.5	31
FULL BODY LENGTH	32	32.75	33.5	34.25	34.25	34.25
SLEEVE LENGTH	38	39	39.75	40.5	41	41.5

Size Chart

	LT	XLT	2XT	3XT	4XT	5XT
CHEST	42-45	46-49	50-52	53-56	57-60	61-64

4 Available Colors

			
Black	Carbon	Classic Navy	White
PMS procblekc	PMS 7540c	PMS 533c	PMS white



BACK VIEW



SIDE VIEW





PRODUCT DETAILS



88181T prime

Core 365 Men's Tall Origin Performance Piqué Polo

Features

- matching flat-knit collar
- heat-seal label

Fabric

- 100% polyester pique, 4.1 oz./yd²/140 gsm
- Moisture wicking, antimicrobial and UV protection performance

Sizes

- LT - 5XT

Product Specifications

	LT	XLT	2XT	3XT	4XT	5XT
BODY WIDTH	23.5	25	26.5	28	29.5	31
FULL BODY LENGTH	32	32.75	33.50	34.25	34.25	34.25
SLEEVE LENGTH	21.75	22.375	23	23.625	24.125	24.625

Size Chart

	LT	XLT	2XT	3XT	4XT	5XT
CHEST	42-45	46-49	50-52	53-56	57-60	61-64



BACK VIEW



SIDE VIEW



6 Available Colors



Black



Carbon



Classic Navy



Classic Red



True Royal



White

PMS
procblckcPMS
7540cPMS
533cPMS
201cPMS
661cPMS
white

JERZEES®

SPOTSHIELD™

436MPR

Spotshield™ Pocket Jersey Sport Shirt

**GENDER**

Adult

FABRIC

50/50 Cotton/Polyester Pre-shrunk Jersey with stain-resistant finish

WEIGHT

5.4 oz / 183 g

DESCRIPTION

- SpotShield™ fabric repels water and most oil-based spills
- Made with sustainably sourced USA grown cotton
- Tear-away label
- Welt knit collar that resists curling
- 5-point left chest pocket
- Two-button placket with bottom box-stitch reinforcement
- Pearlized buttons with durable cross-stitching
- Two-needle hemmed sleeves and bottom
- Quarter-turned to eliminate center crease
- Imported

FABRIC VARIATIONS

- Oxford - 47% Cotton / 53% Polyester

MAROON	TRUE RED
ROYAL	LIGHT BLUE
SAFETY GREEN	FOREST GREEN
OXFORD	WHITE
SAFETY ORANGE	ASH
J. NAVY	BLACK

PRODUCT FEATURES

Dimensions	S	M	L	XL	2XL	3XL	4XL	5XL
Width	19	21	23	25	27	29	30	31
Length	29	30	31	32	33	34	35	36
Center Back Sleeve Length	19	20	21	22	23	24	25	26

Case Quantity	S	M	L	XL	2XL	3XL	4XL	5XL
Units	36	36	36	36	36	36	36	12

GILDAN®**Ultra Cotton® 100% Cotton T-Shirt with Pocket.
2300**

- 6-ounce, 100% US cotton
- 50/50 cotton/poly (Safety Green, Safety Orange)
- 99/1 cotton/poly (Ash)
- 90/10 cotton/poly (Sport Grey)
- Non-topstitched, classic width, rib collar
- Taped neck and shoulders
- Left chest pocket

Due to the nature of 50/50 cotton/poly neon fabrics, special care must be taken throughout the printing process.

CARE INSTRUCTIONS

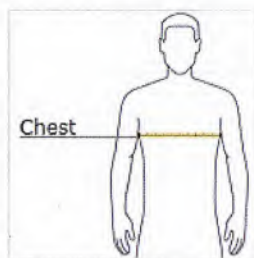
Machine wash warm, inside out, with like colors. Only non-chlorine bleach. Tumble dry medium. Do not iron if decorated. Do not dry clean.



front



back





HOW TO MEASURE**CHEST WIDTH**

Measure under the arm and around the fullest part of the chest with arms down, keeping tape horizontal.

SIZE CHART

	S	M	L	XL	2XL	3XL	4XL	5XL
Chest	34-36	38-40	42-44	46-48	50-52	54-56	58-60	62-64

COLOR INFORMATION

										
Ash PMS COOL GRAY 3C	Black PMS 426C	Charcoal PMS COOL GRAY 10C	Forest PMS 5535C	Light Blue PMS 543C	Maroon PMS 7644C	Navy PMS 533C	Orange PMS 2026C	Red PMS 199C	Royal PMS 7688C	S. Orange PMS Orange 021
										
Safety Green PMS 382C	Sand PMS 7528C	Sport Grey PMS COOL GRAY 7C	White							

*Not all sizes are available in every color.

GILDAN®**Ultra Cotton® 100% Cotton Long Sleeve T-Shirt with Pocket. 2410**

- 6-ounce, 100% US cotton
- 50/50 cotton/poly (Safety Green, Safety Orange)
- 90/10 cotton/poly (Sport Grey)
- Non-topstitched, classic width, rib collar
- Taped neck and shoulders
- Left chest pocket
- Rib knit cuffs

Due to the nature of 50/50 cotton/poly neon fabrics, special care must be taken throughout the printing process.

CARE INSTRUCTIONS

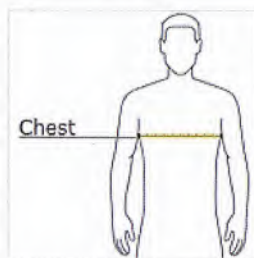
machine was warm, inside out, with like colors. Only non-chlorine bleach. Tumble dry medium. Do not iron. Do not dry clean.



front



back

HOW TO MEASURE**CHEST WIDTH**

Measure under the arm and around the fullest part of the chest with arms down, keeping tape horizontal.

SIZE CHART

	S	M	L	XL	2XL	3XL
Chest	38-40	42-44	46-48	50-52	54-56	58-60

COLOR INFORMATION

Black
PMS 426C



Navy
PMS 533C



S. Orange



Safety Green
PMS 382C



Sport Grey
PMS COOL GRAY
7C



White

*Not all sizes are available in every color.

**PORT &
COMPANY®**
Port & Company® Performance Tee. PC380


Our value-priced polyester tee performs with Dry Zone® moisture-wicking technology to keep you cool, dry and comfortable.

- 3.8-ounce, 100% polyester
- Tag-free label

Due to the nature of 100% polyester performance fabrics, special care must be taken throughout the screen printing process.

Given the extreme heat required for sublimation, please consult with your decorator. It is highly recommended to sample test product by color before production.

CARE INSTRUCTIONS

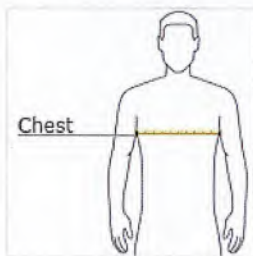
Machine wash cold, inside out with like colors, only non-chlorine bleach when needed. Tumble dry low. Do not iron. Do not use fabric softener.



front



back

HOW TO MEASURE

CHEST WIDTH

Measure under the arm and around the fullest part of the chest with arms down, keeping tape horizontal.

SIZE CHART

	XS	S	M	L	XL	2XL	3XL	4XL
Chest	32-34	35-37	38-40	41-43	44-46	47-49	50-53	54-57

COLOR INFORMATION



Athletic Maroon PMS 209C	Carolina Blue	Charcoal PMS 2334 C	Dark Green PMS 560C	Deep Navy PMS 532 C	Gold PMS 137C	Grey Concrete	Jet Black PMS BLACK 6 C	Neon Blue PMS 801C	Neon Green PMS 902C	Neon Orange PMS 811C
Neon Pink PMS 926C	Neon Yellow PMS NO MATCH	Red PMS 200C	Royal PMS 2133 C	Silver PMS COOL GREY 6 C	Team Purple	White				

FEURY

IMAGE GROUP

feuryimagegroup.com



5596 Hanes Men's Authentic-T Long-Sleeve Pocket T-Shirt  

11 Available Colors - Color Selected: NAVY



Fabric:

- 6 oz., 100% preshrunk cotton
- Ash: 99/1 cotton/poly; Light Steel: 90/10 cotton/poly
- Made with sustainably sourced USA grown cotton

Feature:

- Tagless 6 oz. styles are transitioning to the Authentic-T Family
- Tag-free neck label transitioning to tear away label. INVENTORY MAY BE MIXED
- Set-in 1x1 rib crewneck
- Self-fabric neck tape for comfort
- Quarter-turned body
- Double-needle bottom hem
- Soft ribbed cuffs
- Five-point left-chest pocket
- "A" list status from CDP (Carbon Disclosure Project)
- Energy Star Partner of the Year (12 consecutive years)
- Every piece of Hanes apparel purchased from our company qualifies for Hanes4Education
- Deco Eligible



ANSI TYPE R

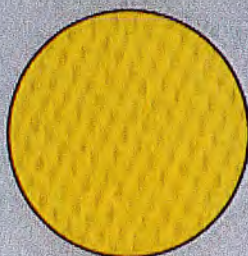
BIRDSEYE T-SHIRTS

WICKING POLYESTER FABRIC

THE MOST COMFORTABLE T-SHIRT**WHAT IS WICKING BIRDSEYE?**

The fabric's pattern – smooth, clear finish and small diamond-shaped figures with a dot in the center of each suggests the eye of a bird. Very soft, lightweight, absorbent & launders well

- 100% ANSI Wicking Polyester Birdseye
- 2" Silver reflective tape
- 3.8 oz. fabric weight
- Sizing: S-5X



SHORT SLEEVE
LUX-SSETP2B



BLACK BOTTOM
LUX-SSETPBK



LONG SLEEVE (NO POCKET)
LUX-LSET2B

**CLASS 2**

SHORT SLEEVE
LUX-SSETP3B



BLACK BOTTOM
LUX-LSETPBK



LONG SLEEVE
LUX-LSETP3B

**CLASS 3**

SHORT SLEEVE
LUX-XSSPB



LONG SLEEVE
LUX-XLSPB

NON-ANSI**HQ / EASTERN WAREHOUSE**

585-52 North Bicycle Path
Port Jefferson Station, NY 11776

WESTERN WAREHOUSE

555 Vista Blvd
Sparks, NV 89434

PHONE: 800-466-0071 FAX: 631-474-0073 INFO@OCCUNOMIX.COM OCCUNOMIX.COM



ANSI TYPE R

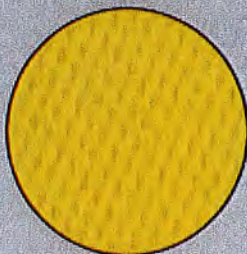
BIRDSEYE T-SHIRTS

WICKING POLYESTER FABRIC

THE MOST COMFORTABLE T-SHIRT**WHAT IS WICKING BIRDSEYE?**

The fabric's pattern – smooth, clear finish and small diamond-shaped figures with a dot in the center of each suggests the eye of a bird. Very soft, lightweight, absorbent & launders well

- 100% ANSI Wicking Polyester Birdseye
- 2" Silver reflective tape
- 3.8 oz. fabric weight
- Sizing: S-5X



SHORT SLEEVE
LUX-SSETP2B



BLACK BOTTOM
LUX-SSETPBK



LONG SLEEVE (NO POCKET)
LUX-LSET2B

**CLASS 2**

SHORT SLEEVE
LUX-SSETP3B



BLACK BOTTOM
LUX-LSETPBK



LONG SLEEVE
LUX-LSETP3B

**CLASS 3**

SHORT SLEEVE
LUX-XSSPB



LONG SLEEVE
LUX-XLSPB

NON-ANSI**HQ / EASTERN WAREHOUSE**

585-52 North Bicycle Path
Port Jefferson Station, NY 11776

WESTERN WAREHOUSE

555 Vista Blvd
Sparks, NV 89434

PHONE: 800-466-0071 FAX: 631-474-0073 INFO@OCCUNOMIX.COM OCCUNOMIX.COM



ANSI TYPE R CLASS 3

9 OZ. SWEATSHIRTSLUX-CSWT, LUX-HZSWT, LUX-SWT3HZ,
LUX-SWTHZBK & LUX-HZSWTBX**9 OZ. POLYESTER FLEECE****TYPE R CLASS 3 SWEATSHIRTS**

- 100% Polyester Fleece
- 2" Silver reflective tape
- Elastic cuffs and waistband
- Pockets: 2 lower front
- SIZES: S-5X

**BLACK BOTTOM
FULL ZIP HOODIE**

LUX-SWTHZBK

Also available in X-Back

LUX-HZSWTBX

ZIPPER HOODIE
LUX-SWT3HZZIPPER HOODIE
LUX-HZSWTCREW NECK
LUX-CSWT**HQ / EASTERN WAREHOUSE**585-52 North Bicycle Path
Port Jefferson Station, NY 11776**WESTERN WAREHOUSE**555 Vista Blvd
Sparks, NV 89434

PHONE: 800-466-0071 FAX: 631-474-0073 INFO@OCCUNOMIX.COM OCCUNOMIX.COM



ANSI TYPE R CLASS 3

9 OZ. SWEATSHIRTSLUX-CSWT, LUX-HZSWT, LUX-SWT3HZ,
LUX-SWTHZBK & LUX-HZSWTBX**9 OZ. POLYESTER FLEECE****TYPE R CLASS 3 SWEATSHIRTS**

- 100% Polyester Fleece
- 2" Silver reflective tape
- Elastic cuffs and waistband
- Pockets: 2 lower front
- SIZES: S-5X

**BLACK BOTTOM
FULL ZIP HOODIE**

LUX-SWTHZBK

Also available in X-Back

LUX-HZSWTBX

ZIPPER HOODIE
LUX-SWT3HZZIPPER HOODIE
LUX-HZSWTCREW NECK
LUX-CSWT**HQ / EASTERN WAREHOUSE**585-52 North Bicycle Path
Port Jefferson Station, NY 11776**WESTERN WAREHOUSE**555 Vista Blvd
Sparks, NV 89434

PHONE: 800-466-0071 FAX: 631-474-0073 INFO@OCCUNOMIX.COM OCCUNOMIX.COM



Reflective Apparel 603STLB Safety Hi Vis 2-Tone Hoodie Jacket, Thermal Liner: Full Zip:
16oz, Uniform, Reflective, 100% Polyester, Lime Green/Black

603-ST-LB HIGH VISIBILITY SAFETY FEATURES

ANSI/ISEA Type R Class 3 Compliant

2" Retroreflective Tape with 360 Degree Reflective Coverage
High Visibility Reflective Safety Hoodie – Fluorescent Yellow-Green

Reflective

3M™ Scotchlite™ Reflective Material 8910 Silver Fabric Tape

Sweatshirt Material

100% Polyester Fabric
16oz Thermal Lined Hoodie

OUTER MATERIAL

10.5oz Microfiber Fleece
Two-Tone High Visibility Fluorescent Lime & Black

INNER MATERIAL

5.5oz Cotton Thermal Liner

Additional Features

System Gear
Zip Closure
Thermal Lined Hood with Drawstrings
2 Front Pouch Pockets
Elastic Waist and Cuffs

3M™ Scotchlite™ Reflective Material – 8910 Silver Fabric Trim is certified to meet ANSI/ISEA 107-2020 Level 2 retroreflective performance.



ANSI TYPE R CLASS 3

5-IN-1 PARKA JACKET LUX-TJFS

KEEP IN THE HEAT

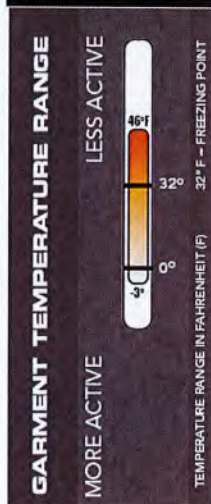
- ANSI 100% Polyester 300 Denier Oxford with PU coating – waterproof with sealed seams
- Three layers of weather blocking fabrics with bodywarmer
- Removable and reversible quilted vest
- Roll-away hood
- Zipper and snap closure
- 2" 3M™ Scotchlite™ Reflective material
- Sizing: S-5X



LUX-TJFS

The thermometer shows the ANSI tested, ASTM F2732, temperature range for garments. Whether you are standing out in the elements in between tasks or hard at work, we have the right gear for your winter.

- 2 lower flapped pockets on outer coat
- 1 inner coat pocket
- 2 outer flapped pockets on bodywarmer
- 2 inner flapped pockets on bodywarmer

Class 3
ParkaClass 2
VestClass 2 Vest
w/Quilted
SleevesQuilted
BodywarmerReversible
Quilted Vest

HQ / EASTERN WAREHOUSE

585-52 North Bicycle Path
Port Jefferson Station, NY 11776

WESTERN WAREHOUSE

555 Vista Blvd
Sparks, NV 89434

PHONE: 800-466-0071 FAX: 631-474-0073 INFO@OCCUNOMIX.COM OCCUNOMIX.COM



CLASS 3 RIP-STOP BOMBER JACKET

Features

- ANSI Class 3
- Rip Stop waterproof polyester outer shell
- Removable black fleece liner
- Water tight D ring access
- ID pocket, and radio/cell pocket
- Adjustable elastic cuffs and elastic waist

Applications

- Construction
- Utility
- Emergency response personnel

Care Instructions

Hand wash in cold water NO bleach.
Tumble dry low. Do not iron. Do not dry
clean 100% Polyester

CODE	SIZE
82145	Medium
82146	Large
82147	X - Large
82148	2X - Large
82149	3X - Large
82150	4X - Large
82151	5X - Large

ROCKLAND[®]

HI-VIS



Water Tight D-Ring Access on back of jacket



Hood hidden in collar

GARMENT SPECIFICATION	M	L	XL	2XL	3XL	4XL	5XL
1/2 Chest	26	27.5	29	31	32	34	35
Center back body length	28	29	30	31	31	31	31.5
Sleeve length from shoulder	25.5	26	26	26.5	27	27.5	28
1/2 Bottom width	16	17	19	20	22	23.5	25

*All Sizes In Inches



Rockland Outerwear

Toll Free: 800.451.5811 Fax: 877.848.2727 • sales@powerpak.net • www.powerpak.net

PRODUCT DETAILS


88205 primeplus

Core 365 Men's Region 3-in-1 Jacket with Fleece Liner

Features

- SHELL: storm flap with hidden snaps at top and bottom
- inside placket; roll-away hood; adjustable cuffs with tabs
- lower concealed pocket with zippers and reflective toggles
- audio port access through inside left pocket
- thermal retention shockcord at hood and drop back hem
- reflective piping at shoulder yoke and upper back panels
- LINER: inside placket
- center front reversible zipper
- lower concealed pockets with autolock zippers
- audio port access through inside left pocket

Fabric

- SHELL: 100% poly twill
- 3.9 oz./yd2/132 gsm with water resistant and cure finish
- SHELL LINING: 100% polyester taffeta
- LINER JACKET: 100% polyester anti-pill fleece
- 7.7 oz./yd2/260 gsm

Sizes

- S - 5XL

Product Specifications

	S	M	L	XL	2XL	3XL	4XL	5XL
BODY WIDTH	23.5	25	26.5	28.5	30.5	32.5	34.5	36.5
FULL BODY LENGTH	29.75	30.88	31.5	32.13	32.75	33.38	34	34.63
SLEEVE LENGTH	35	36	37	38	39	40	40.75	41.5

Size Chart

	S	M	L	XL	2XL	3XL	4XL	5XL
CHEST	35-38	39-41	42-45	46-49	50-52	53-56	57-60	61-64

5 Available Colors

Black	Classic Navy	Classic Red	Forest	True Royal
PMS 6005c	PMS 533c	PMS 201c	PMS 5535c	PMS 661c



BACK VIEW



SIDE VIEW



PRODUCT DETAILS



HARRITON®

M985 primeplus**Harrington Adult 8 oz. Fleece Vest****Features**

- Dyed-to-match zippers and zipper pull
- Bottom hem with drawcord and toggles
- Back yoke
- Binding on arm openings
- Front-zip pockets
- Center front full-zip closure
- Inside zipper is clean-finished with taping

Fabric

- 100% spun soft polyester fleece with non-pill finish on surface
- Midweight fleece – highly breathable

Sizes

- S - 4XL

Product Specifications

	S	M	L	XL	2XL	3XL	4XL
BODY WIDTH	21	22.5	24	25.5	27.5	29.5	31.5
FULL BODY LENGTH	26	27	28	29	30	30.5	31

Size Chart

	S	M	L	XL	2XL	3XL	4XL
CHEST	35-38	39-41	42-45	46-49	50-52	53-56	57-60



BACK VIEW



SIDE VIEW

**8 Available Colors**

Black

PMS
procblckc

Charcoal

PMS
424c

Hunter

PMS
560c

Navy

PMS
532c

Red

PMS
187cSafety
OrangePMS
811c

Safety Yellow

PMS
809c

True Royal

PMS
654c

**PORT &
COMPANY®**
**Port & Company® Ladies Performance Tee.
LPC380**


Rated UPF50 to help combat harmful UV rays, this tee also performs with Dry Zone® moisture-wicking technology to keep you cool, dry and comfortable.

- 3.8-ounce, 100% polyester
- Removable tag for comfort and relabeling

Due to the nature of 100% polyester performance fabrics, special care must be taken throughout the printing process. Please note: This product is transitioning from tag-free labels to tear-away labels. Your order may contain a combination of both.

CARE INSTRUCTIONS

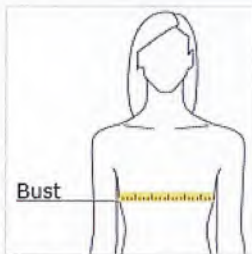
Machine wash cold, inside out with like colors, only non-chlorine bleach when needed. Tumble dry low. Do not iron. Do not use fabric softener.



front



back

HOW TO MEASURE

BUST

Measure under the arm and around the fullest part of the bust with arms down, keeping tape horizontal.

SIZE CHART

	XS	S	M	L	XL	XXL	3XL	4XL
Bust	32-34	35-36	37-38	39-41	42-44	45-47	48-51	52-55
Size	2	4/6	8/10	12/14	16/18	20/22	24/26	28/30

COLOR INFORMATION


Charcoal
PMS 2334 C



Deep Navy
PMS 532 C



Jet Black
PMS BLACK 6 C



Neon Blue
PMS 801C



Neon Green
PMS 902C



Neon Pink
PMS 926C



Red
PMS 200C



Royal
PMS 2133 C



Silver
PMS COOL GREY
6 C



White

**PORT &
COMPANY®**
Port & Company® Performance Tee. PC380


Rated UPF50 to help combat harmful UV rays, this tee also performs with Dry Zone® moisture-wicking technology to keep you cool, dry and comfortable.

- 3.8-ounce, 100% polyester
- Removable tag for comfort and relabeling

Due to the nature of 100% polyester performance fabrics, special care must be taken throughout the screen printing process.

Given the extreme heat required for sublimation, please consult with your decorator. It is highly recommended to sample test product by color before production.

Please note: This product is transitioning from tag-free labels to tear-away labels. Your order may contain a combination of both.

CARE INSTRUCTIONS

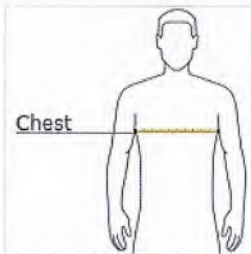
Machine wash cold, inside out with like colors, only non-chlorine bleach when needed. Tumble dry low. Do not iron. Do not use fabric softener.



front



back

HOW TO MEASURE

CHEST WIDTH

Measure under the arm and around the fullest part of the chest with arms down, keeping tape horizontal.

SIZE CHART

	XS	XS	S	S	M	M	L	L	XL	XL	2XL	3XL	3XL	4XL	4XL
Chest	32-34	32-34	35-37	35-37	38-40	38-40	41-43	41-43	44-46	44-46	47-49	50-53	50-53	54-57	54-57

COLOR INFORMATION

Athletic Maroon PMS 209C	Carolina Blue PMS 7682C	Charcoal PMS 2334 C	Dark Green PMS 560C	Deep Navy PMS 532 C	Gold PMS 137C	Grey Concrete PMS 10C	Jet Black PMS BLACK 6 C	Neon Blue PMS 801C	Neon Green PMS 902C	Neon Orange PMS 811C
Neon Pink PMS 926C	Neon Yellow PMS NO MATCH	Red PMS 200C	Royal PMS 2133 C	Silver PMS COOL GREY 6 C	Team Purple PMS 669C	True Royal PMS 7687C	White			

PORT AUTHORITY.**Port Authority® Heavyweight Cotton Pique Polo with Pocket. K420P**

We garment washed our pique knit polo for softness and added a left chest pocket for pens and more.

- 7-ounce, 100% ring spun combed cotton
- Double-needle stitching throughout
- Flat knit collar and cuffs
- Locker patch
- Horn-tone buttons
- Side vents

CARE INSTRUCTIONS

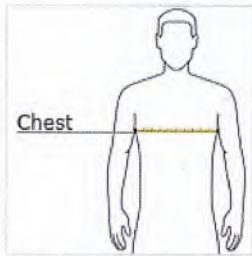
Machine Wash Cold With Like Colors. Do Not Bleach. Tumble Dry Low. Warm Iron If Necessary.



front



back

HOW TO MEASURE**CHEST WIDTH**

Measure under the arm and around the fullest part of the chest with arms down, keeping tape horizontal.

SIZE CHART

	XS	S	M	L	XL	2XL	3XL	4XL	5XL	6XL
Chest	32-34	35-37	38-40	41-43	44-46	47-49	50-53	54-57	58-60	61-63

COLOR INFORMATION

Black
PMS NTR BLACK
C



Dark Green
PMS 627C



Light Blue
PMS 7451C



Navy
PMS 533C



Oxford
PMS COOL GRAY
7C



Royal
PMS 3597C

White

PORTWEST®

PRODUCT SPECIFICATION & TECHNICAL DATA

A146 - Arctic Winter Glove - Nitrile Sandy

Collection: Thermal Protection Gloves

Range: HAND PROTECTION

Materials: Nylon, Acrylic, Nitrile Sandy

Inner Pack: 12

Outer Carton: 144

Product information

Specially designed for use in cold conditions Twin liner traps in heat through increased insulation Flexible sandy nitrile coating offers great grip in wet and dry conditions 3/4 dipped for increased protection 100% breathable seamless liner



Thermal Protection Gloves

When cold thermal hazards are present, the hands' motor skills can be greatly reduced, this leads to increased risks of accidents and injury. Specially designed thermal protective gloves are available to combat these hazardous environments.

HAND PROTECTION

A wide and increasing range of Hand Protection styles is available. In order to help cater to every need. Only the best materials and manufacturing methods are used in the production of Portwest's extensive range of Hand Protection products.

Standards

AS/NZS 2161 .2
AS/NZS 2161 .3
AS/NZS 2161 .5
ANSI/ISEA 105: 2016 CUT Level (A2)
EN388:2016 +A1:2018 - (4.2.4.2.X)
EN 407 (X.2.X.X.X.X)
EN 511 (X.2.X)
EN 420



Features

- CE Certified
- Specially designed for use in cold conditions
- Superb abrasion and tear resistance
- 3/4 dipped for increased protection
- Twin liner traps in heat through increased insulation
- Flexible sandy nitrile coating offers great grip in wet and dry conditions
- 15 gauge liner for extra dexterity
- 100% breathable seamless liner
- Retail tag which aids presentation for retail sales
- 15 gauge liner for extra dexterity

	Range
Black	L/9 - XXL/11
Yellow/Black	M/8 - XXL/11